




25051

LOC/DME I-RUT 111.7 Chan 54	APP CRS 194°	Rwy Idg 5004 TDZE 787 Apt Elev 787
---	------------------------	---

ILS Y or LOC Y RWY 19
RUTLAND/SOUTHERN VERMONT RGNL (RUT)

DME required.

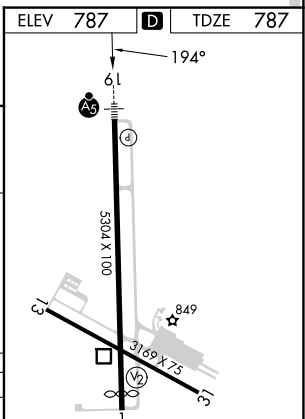
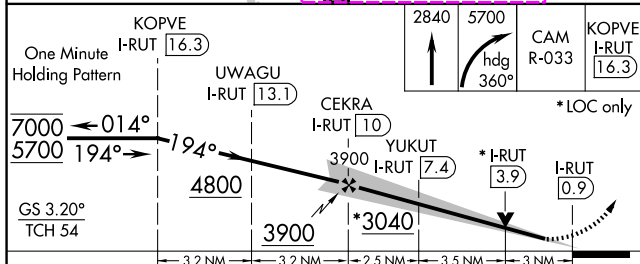
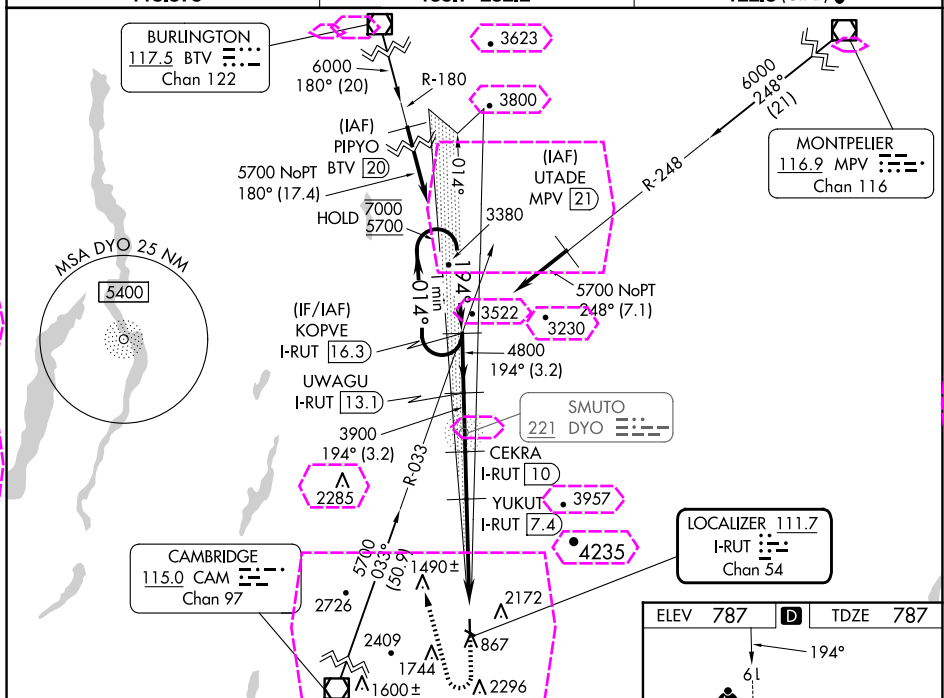
 Circling to Rwy 13, 31 NA at night.
 Circling NA northeast of Rwy 19 and 31.
 -8°C Inop table does not apply to S-ILS 19 all Cats, S-LOC 19 Cats C/D.


MALSR

MISSED APPROACH: Climb to 2840 then climbing right turn to 5700 on heading 360° and CAM VOR/DME R-033 to KOPVE/I-RUT 16.3 DME and hold.

AWOS-3PT
118.375

BOSTON CENTER
135.7 282.2

UNICOM
122.8 (CTAF) **L**

CATEGORY	A	B	C	D
S-ILS 19	2162-5 1375 (1400-5)			
S-LOC 19	2160-3/4 1373 (1400-3/4)	2160-1 1373 (1400-1)	2160-3 1373 (1400-3)	
 CIRCLING	2160-1 1/4 1373 (1400-1 1/4)	2160-1 1/2 1373 (1400-1 1/2)	2520-3 1733 (1800-3)	2760-3 1973 (2000-3)

HIRL Rwy 1-19 (L)
MIRL Rwy 13-31 (L)
REIL Rwy 13 (L)

RUTLAND, VERMONT
Amdt 1A 25FEB21

RUTLAND/SOUTHERN VERMONT RGNL (RUT)
ILS Y or LOC Y RWY 19

RUTLAND, VERMONT

AL-968 (FAA)

25219

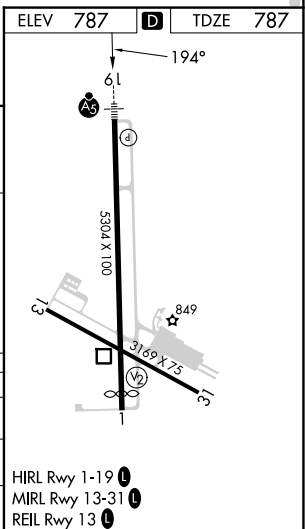
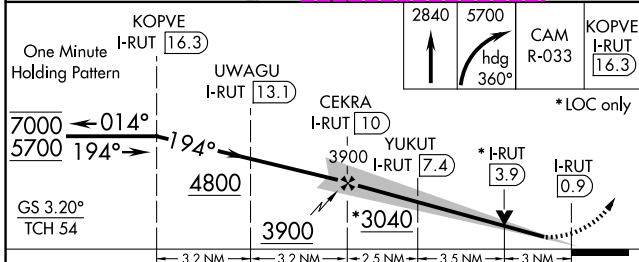
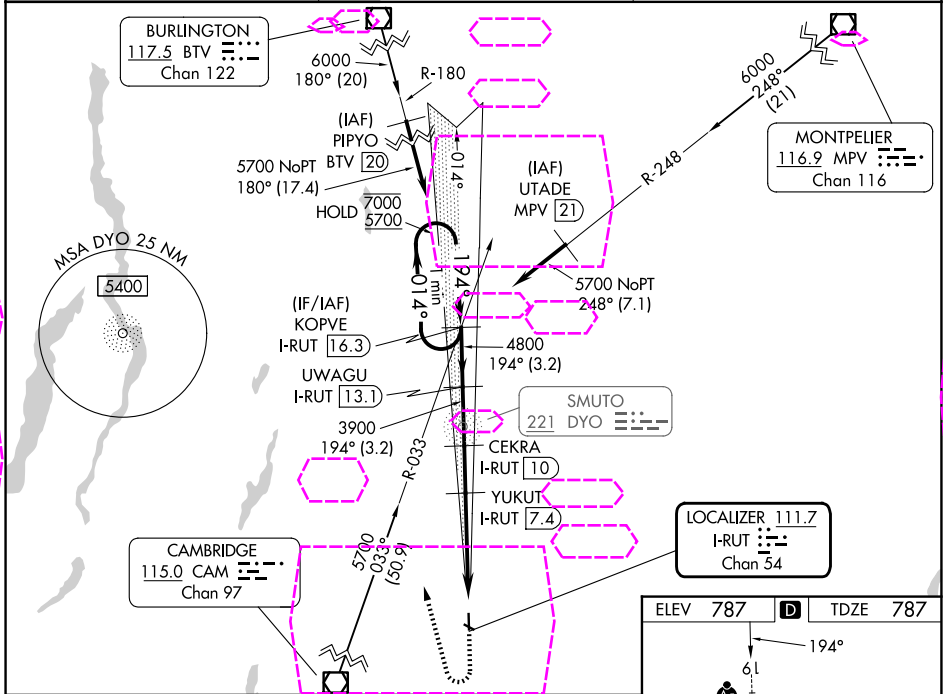
LOC/DME I-RUT 111.7 Chan 54	APP CRS 194°	Rwy Ldg TDZE 5004 Apt Elev 787
---	------------------------	--

ILS Y or LOC Y RWY 19

RUTLAND/SOUTHERN VERMONT RGNL (RUT)

DME required.	MALSR	MISSED APPROACH: Climb to 2840 then climbing right turn to 5700 on heading 360° and CAM VOR/DME R-033 to KOPVE/I-RUT 16.3 DME and hold.
Circling to Rwy 13, 31 NA at night. Circling NA northeast of Rws 19 and 31. Inop table does not apply to S-ILS 19 all Cats, S-LOC 19 Cats C/D.		

AWOS-3PT 118.375	BOSTON CENTER 135.7 282.2	UNICOM 122.8 (CTAF) 0
----------------------------	-------------------------------------	---------------------------------



CATEGORY	A	B	C	D
S-ILS 19	2162-5 1375 (1400-5)			
S-LOC 19	2160-3/4 1373 (1400-3/4)	2160-1 1373 (1400-1)	2160-3 1373 (1400-3)	
CIRCLING	2160-1 1/4 1373 (1400-1 1/4)	2160-1 1/2 1373 (1400-1 1/2)	2520-3 1733 (1800-3)	2760-3 1973 (2000-3)

RUTLAND, VERMONT
Amdt 1A 25FEB21

43°32'N-72°57'W

RUTLAND/SOUTHERN VERMONT RGNL (RUT)
ILS Y or LOC Y RWY 19

NE-1, 07 AUG 2025 to 04 SEP 2025

NE-1, 07 AUG 2025 to 04 SEP 2025