

ONTARIO, CALIFORNIA

AL-965 (FAA)

25163

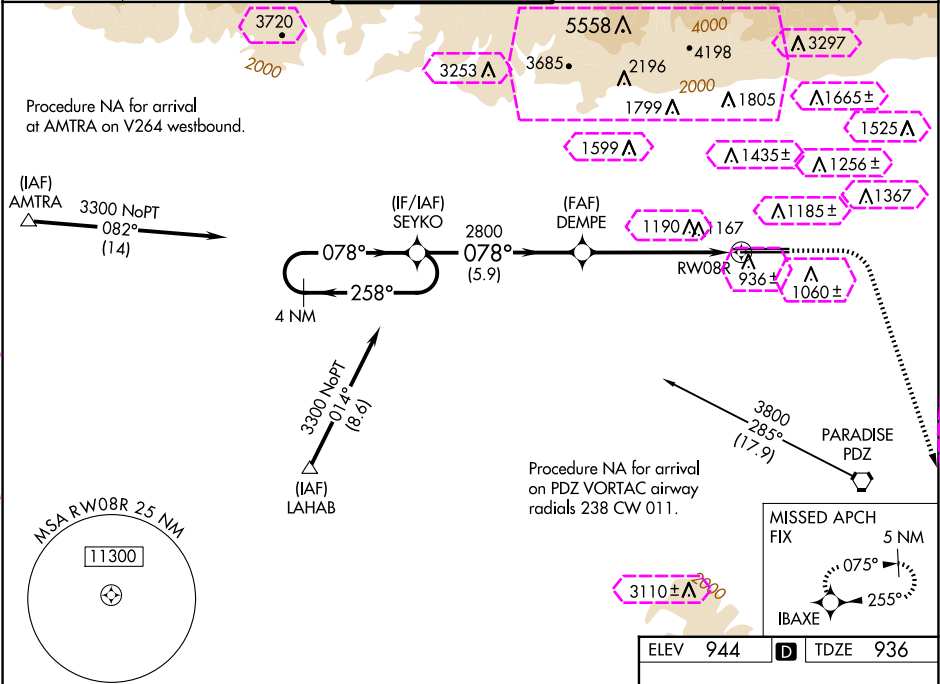
WAAS CH <b>70329</b> <b>W08A</b>	APP CRS <b>078°</b>	Rwy Ldg <b>10200</b> TDZE <b>936</b> Apt Elev <b>944</b>
--	------------------------	--

# RNAV (GPS) Y RWY 8R

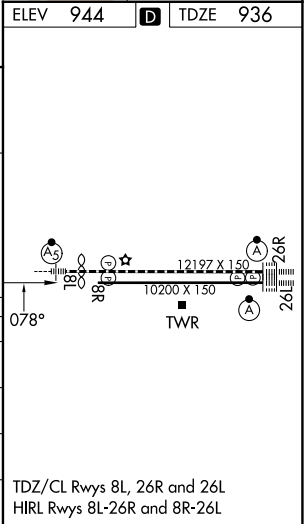
ONTARIO INTL (ONT)

<b>▼</b> For uncompensated Baro-VNAV systems, procedure NA below 2° C (36°F) or above 54°C (130°F). Circling NA north of Rwy 8L-26R. DME/DME RNP-0.3 NA.	MISSED APPROACH: Climb to 1500 then climbing right turn to 5000 direct IBAXE and hold, continue climb-in-hold to 5000.
--	--

D-ATIS <b>124.25</b>	SOCAL APP CON <b>127.0 318.2</b>	ONTARIO TOWER <b>120.6 360.775</b>	GND CON <b>121.9 257.8</b>	CLNC DEL <b>132.9</b>	CPDLC
-------------------------	-------------------------------------	---------------------------------------	-------------------------------	--------------------------	-------



VGSI and RNAV glidepath not coincident (VGSI Angle 3.00/TCH 65)					1500	5000	IBAXE
4 NM Holding Pattern SEYKO					* LNAV only		
3300 ← 258° 078° → 2800 078° 2800					* 1.4 NM to RW08R		
GP 3.00° TCH 53					RW08R		
					5.9 NM	4.3 NM	1.4 NM
CATEGORY	A	B	C	D			
LPV DA	1220/45 284 (300-7%)						
LNAV/VNAV DA	1494-1 7/8 558 (600-1%)						
LNAV MDA	1440/55 504 (500-1)		1440-1 3/8 504 (500-1%)				
<b>CIRCLING</b>	1440-1 496 (500-1)		1540-1 1/2 596 (600-1 1/2)		1600-2 656 (700-2)		



ONTARIO, CALIFORNIA  
Amdt 2 27APR17

34°03'N-117°36'W

# RNAV (GPS) Y RWY 8R

ONTARIO INTL (ONT)

ONTARIO, CALIFORNIA

AL-965 (FAA)

25219

WAAS CH <b>70329</b> <b>W08A</b>	APP CRS <b>078°</b>	Rwy Ldg <b>10200</b> TDZE <b>936</b> Apt Elev <b>944</b>
--	------------------------	--

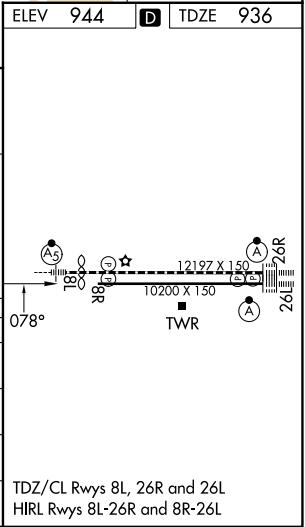
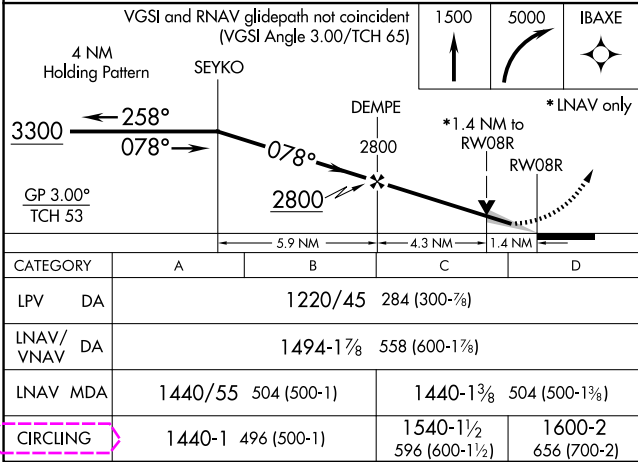
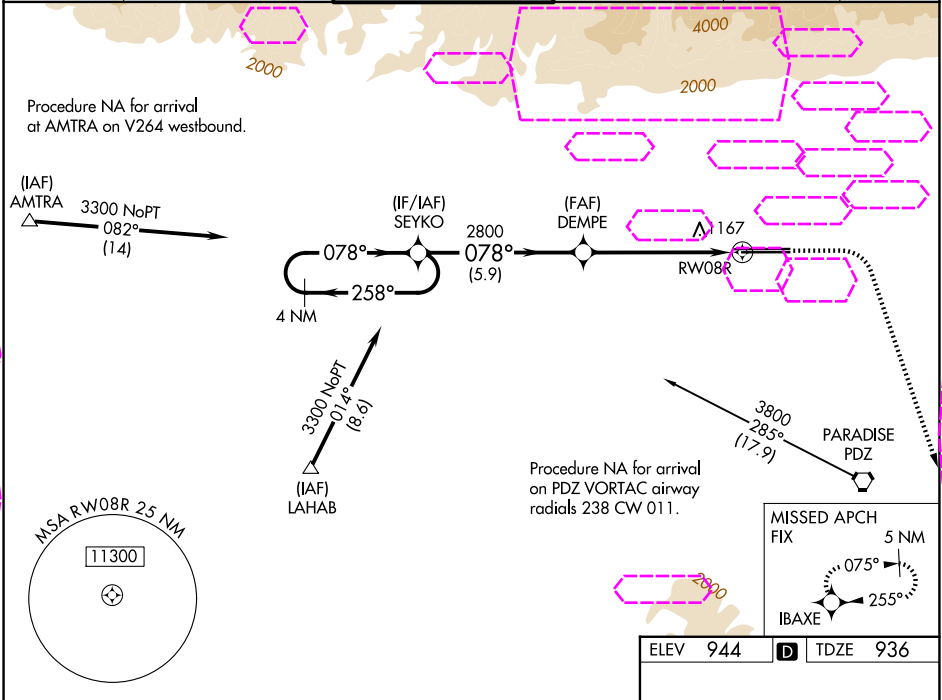
# RNAV (GPS) Y RWY 8R

ONTARIO INTL (ONT)

**▽** For uncompensated Baro-VNAV systems, procedure NA below 2° C (36°F) or above 54°C (130°F). Circling NA north of Rwy 8L-26R. DME/DME RNP-0.3 NA.

MISSED APPROACH: Climb to 1500 then climbing right turn to 5000 direct IBAXE and hold, continue climb-in-hold to 5000.

D-ATIS <b>124.25</b>	SOCAL APP CON <b>127.0 318.2</b>	ONTARIO TOWER <b>120.6 360.775</b>	GND CON <b>121.9 257.8</b>	CLNC DEL <b>132.9</b>	CPDLC
-------------------------	-------------------------------------	---------------------------------------	-------------------------------	--------------------------	-------



ONTARIO, CALIFORNIA  
Amdt 2 27APR17

34°03'N-117°36'W

# RNAV (GPS) Y RWY 8R

ONTARIO INTL (ONT)