

ONTARIO, CALIFORNIA

AL-965 (FAA)

25163


WAAS CH 45807 W08B	APP CRS 078°	Rwy Ldg 11200 TDZE 944 Apt Elev 944
--	------------------------	--

RNAV (GPS) Y RWY 8L

ONTARIO INTL (ONT)

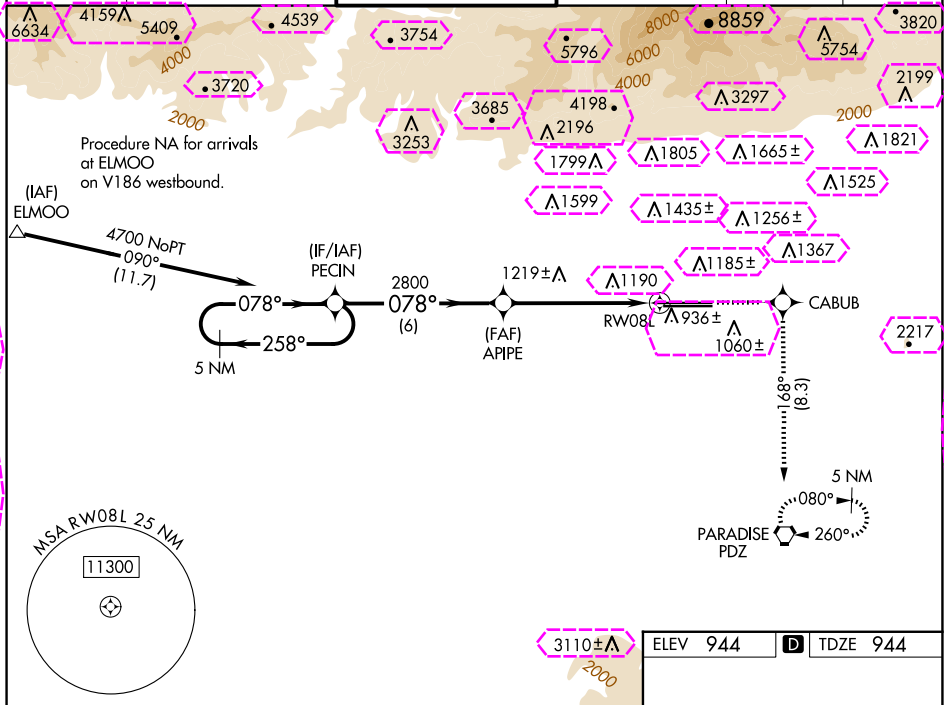
▽ For uncompensated Baro-VNAV systems, LNAV/VNAV NA below -16°C (4°F) or above 47°C (116°F). Circling NA north of Rwy 8L-26R.
DME/DME RNP -0.3 NA. For inoperative MALSR increase LPV visibility all Cats to RVR 6000.

MALSR



MISSED APPROACH: Climb to 4400 direct CABUB and on track 168° to PDZ VORTAC and hold, continue climb-in-hold to 4700.

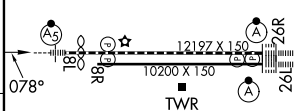
D-ATIS 124.25	SOCAL APP CON 127.0 318.2	ONTARIO TOWER 120.6 360.775	GND CON 121.9 257.8	CLNC DEL 132.9	CPDLC
-------------------------	-------------------------------------	---------------------------------------	-------------------------------	--------------------------	-------



VGSi and RNAV glidepath not coincident (VGSi Angle 3.00/ TCH 62).		4400	CABUB	168° tr	PDZ
5 NM Holding Pattern		↑	✱		⬡
GP 3.00° TCH 45		*LNAV only.			
4700 ← 258° 078° →		*1.5 NM to RW08L			
PECIN		RW08L			
2800		6 NM 4.1 NM 1.5			
CATEGORY	A	B	C	D	
LPV DA	1266/30		322 (400-5%)		
LNAV/VNAV DA	1520-1½		576 (600-1½)		
LNAV MDA	1480/24 536 (600-½)		1480/55 536 (600-1)		
CIRCLING	1480-1 536 (600-1)		1540-1½ 596 (600-1½)		1600-2 656 (700-2)

TDZ/CL Rwy 8L, 26R and 26L

HIRL Rwy 8L-26R and 8R-26L



ONTARIO, CALIFORNIA
Amdt 1D 26MAY16

34°03'N-117°36'W

RNAV (GPS) Y RWY 8L

ONTARIO INTL (ONT)

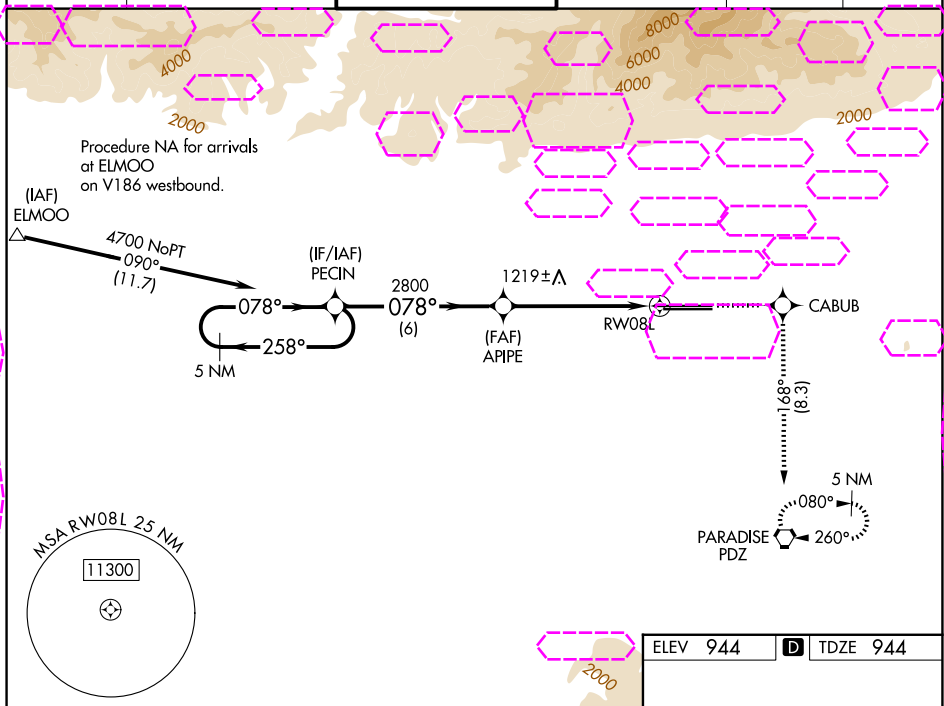
SW-3, 10 JUL 2025 to 07 AUG 2025

SW-3, 10 JUL 2025 to 07 AUG 2025

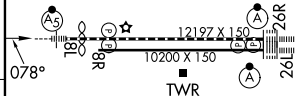
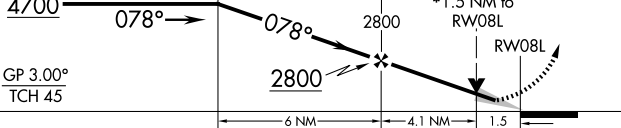
RNAV (GPS) Y RWY 8L
ONTARIO INTL (ONT)

MISSED APPROACH: Climb to 4400 direct CABUB and on track 168° to PDZ VORTAC and hold, continue climb-in-hold to 4700.

CPDLC



* LNAV only.



CATEGORY	A	B	C	D
LPV DA	1266/30 322 (400-56)			
LNAV/VNAV DA	1520-1½ 576 (600-1½)			
LNAV MDA	1480/24 536 (600-½)		1480/55 536 (600-1)	
CIRCLING	1480-1 536 (600-1)		1540-1½ 596 (600-1½)	1600-2 656 (700-2)

TDZ/CL Rwy 8L, 26R and 26L
HIRL Rwy 8L-26R and 8R-26L

ONTARIO INTL (ONT)
RNAV (GPS) Y RWY 8L

SW-3, 07 AUG 2025 to 04 SEP 2025