

ONTARIO, CALIFORNIA

AL-965 (FAA)

25163

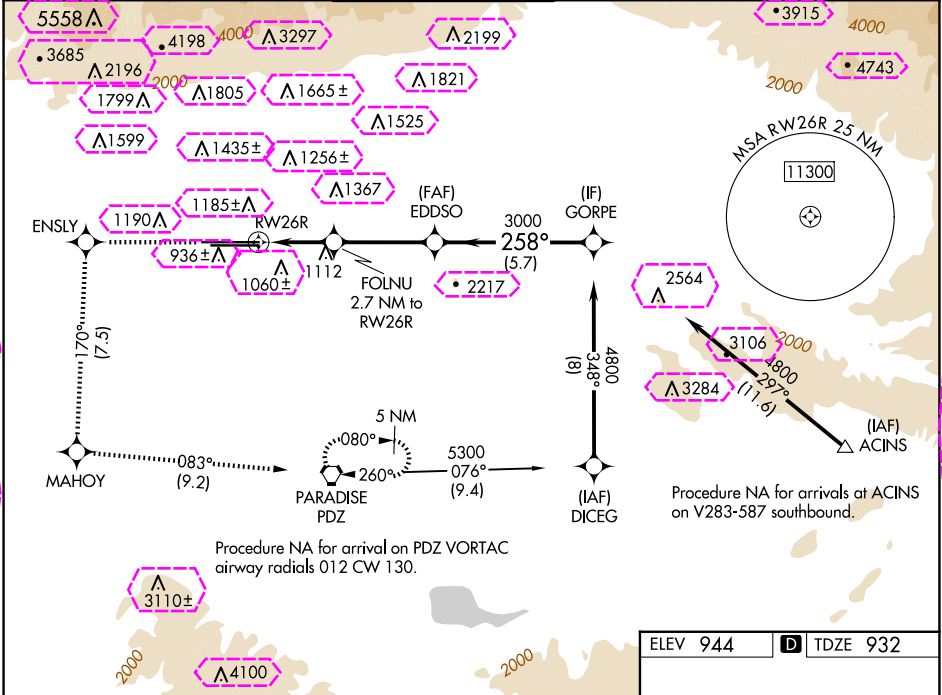
WAAS CH 53406 W26A	APP CRS 258°	Rwy Ldg 12197 TDZE 932 Apt Elev 944
--	------------------------	--

RNAV (GPS) Y RWY 26R

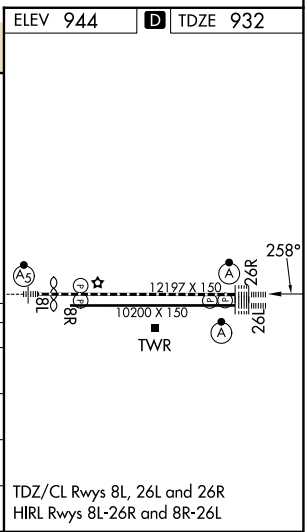
ONTARIO INTL (ONT)

RNP APCH - GPS.	ALSF-2	MISSED APPROACH: Climb to 4700 direct ENSLY and on track 170° to MAHOY and on track 083° to PDZ VORTAC and hold, continue climb-in-hold to 4700.
Circling NA north of Rwy 8L-26R. For uncompensated Baro-VNAV systems, procedure NA below 2°C or above 54°C.		

D-ATIS 124.25	SOCAL APP CON 127.0 318.2	ONTARIO TOWER 120.6 360.775	GND CON 121.9 257.8	CLNC DEL 132.9	CPDLC
-------------------------	-------------------------------------	---------------------------------------	-------------------------------	--------------------------	-------



4700	ENSLY	tr 170°	MAHOY	tr 083°	PDZ	VGSI and RNAV glidepath not coincident (VGSI Angle 3.00/TCH 75).	
CATEGORY		A		B		C	D
LPV	DA	1132/18 200 (200-½)					
LNAV/ VNAV	DA	1267/55 335 (400-1)					
LNAV	MDA	1380/24 448 (500-½)				1380/45 448 (500-¾)	
	CIRCLING	1400-1 456 (500-1)				1500-1½ 556 (600-1½)	1540-2 596 (600-2)



ONTARIO, CALIFORNIA
Amdt 3 10AUG23

34°03'N-117°36'W

ONTARIO INTL (ONT)

RNAV (GPS) Y RWY 26R

ONTARIO, CALIFORNIA

AL-965 (FAA)

25219

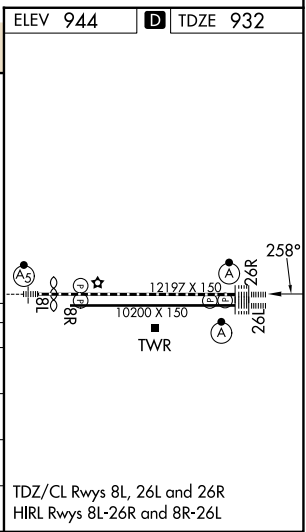
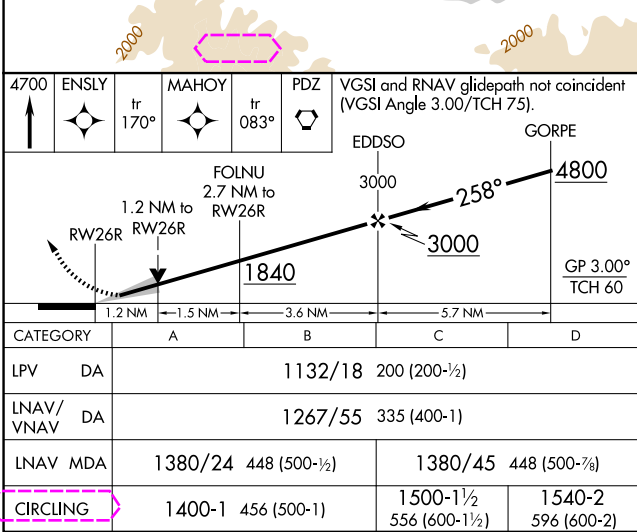
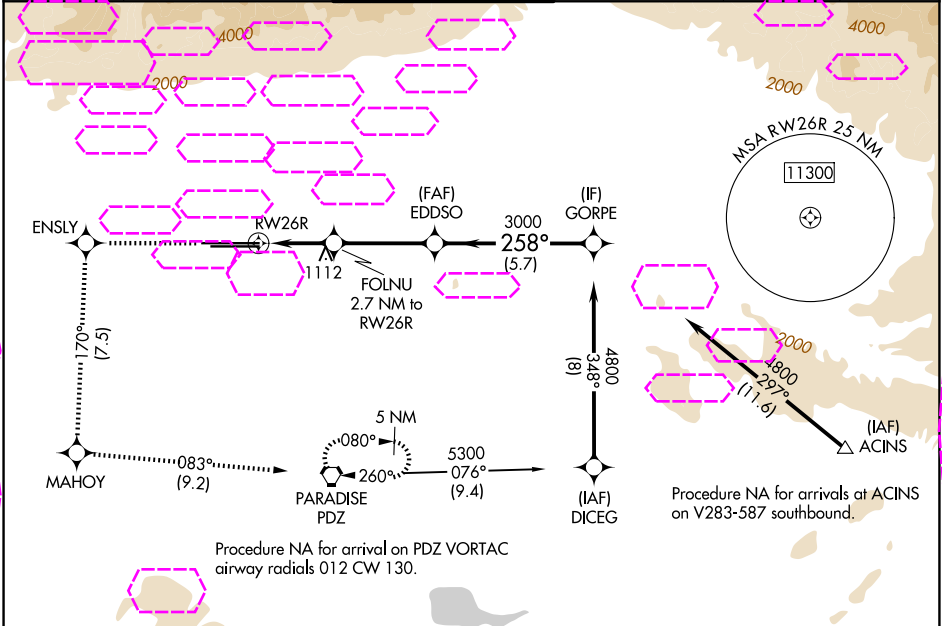
WAAS CH 53406 W26A	APP CRS 258°	Rwy Ldg 12197 TDZE 932 Apt Elev 944
--	------------------------	--

RNAV (GPS) Y RWY 26R

ONTARIO INTL (ONT)

RNP APCH - GPS. ⚠ Circling NA north of Rwy 8L-26R. For uncompensated Baro-VNAV systems, procedure NA below 2°C or above 54°C.	ALSF-2 	MISSED APPROACH: Climb to 4700 direct ENSLY and on track 170° to MAHOY and on track 083° to PDZ VORTAC and hold, continue climb-in-hold to 4700.
--	------------	--

D-ATIS 124.25	SOCAL APP CON 127.0 318.2	ONTARIO TOWER 120.6 360.775	GND CON 121.9 257.8	CLNC DEL 132.9	CPDLC
-------------------------	-------------------------------------	---------------------------------------	-------------------------------	--------------------------	-------



ONTARIO, CALIFORNIA
Amdt 3 10AUG23

34°03'N-117°36'W

RNAV (GPS) Y RWY 26R

ONTARIO INTL (ONT)

SW-3, 07 AUG 2025 to 04 SEP 2025

SW-3, 07 AUG 2025 to 04 SEP 2025