

ONTARIO, CALIFORNIA

AL-965 (FAA)

25163

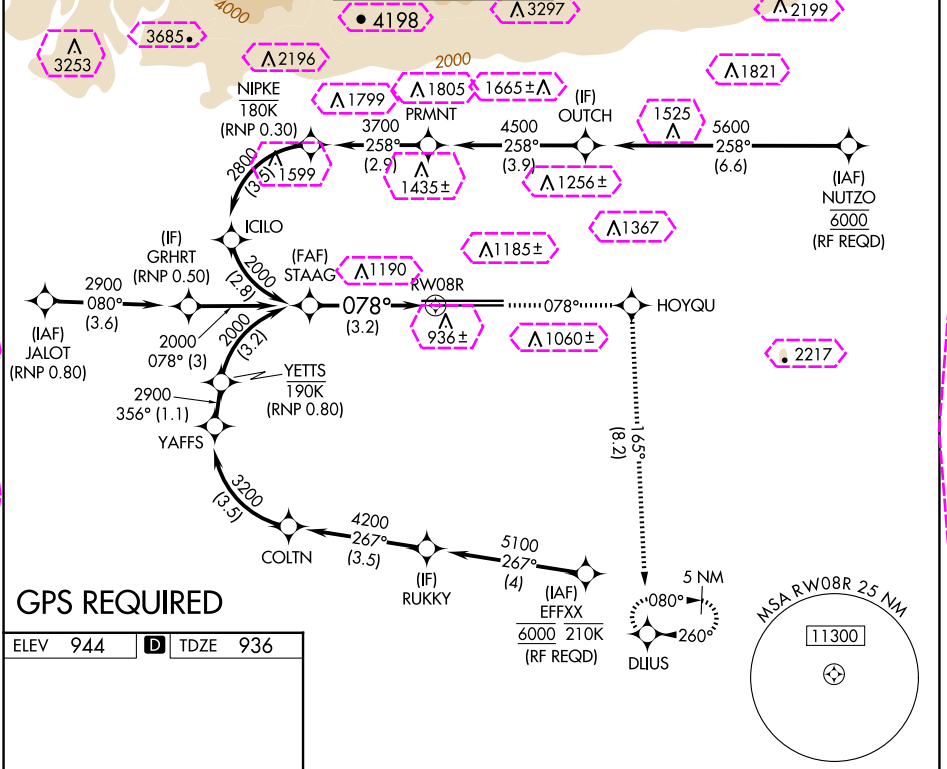
APP CRS	Rwy Ldg	10200
078°	TDZE	936
	Apt Elev	944

RNAV (RNP) Z RWY 8R

ONTARIO INTL (ONT)

NA	For uncompensated Baro-VNAV systems, procedure NA below 2°C (36°F) or above 54°C (130°F).	MISSED APPROACH: Climb to 5300 on track 078° to HOYQU and on track 165° to DLIUS and hold, continue climb-in-hold to 5300.
----	---	--

D-ATIS	SOCAL APP CON	ONTARIO TOWER	GND CON	CLNC DEL	CPDLC
124.25	127.0 318.2	120.6 360.775	121.9 257.8	132.9	

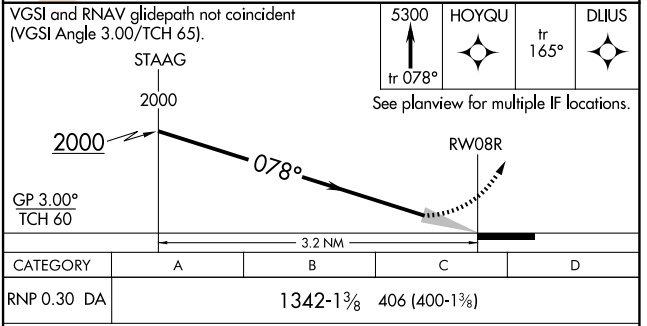
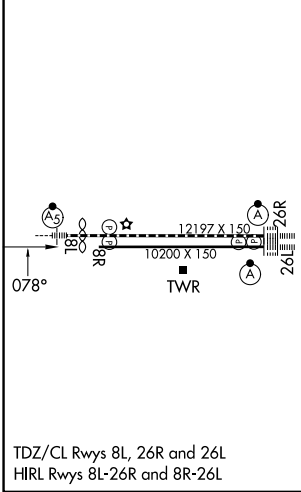


SW-3, 10 JUL 2025 to 07 AUG 2025

SW-3, 10 JUL 2025 to 07 AUG 2025

GPS REQUIRED

ELEV	944	D	TDZE	936
------	-----	---	------	-----



TDZ/CL Rwy 8L, 26R and 26L
HRL Rwy 8L-26R and 8R-26L

ONTARIO, CALIFORNIA

Orig 27APR17

34°03'N-117°36'W

ONTARIO INTL (ONT)

RNAV (RNP) Z RWY 8R

ONTARIO, CALIFORNIA

AL-965 (FAA)

25219

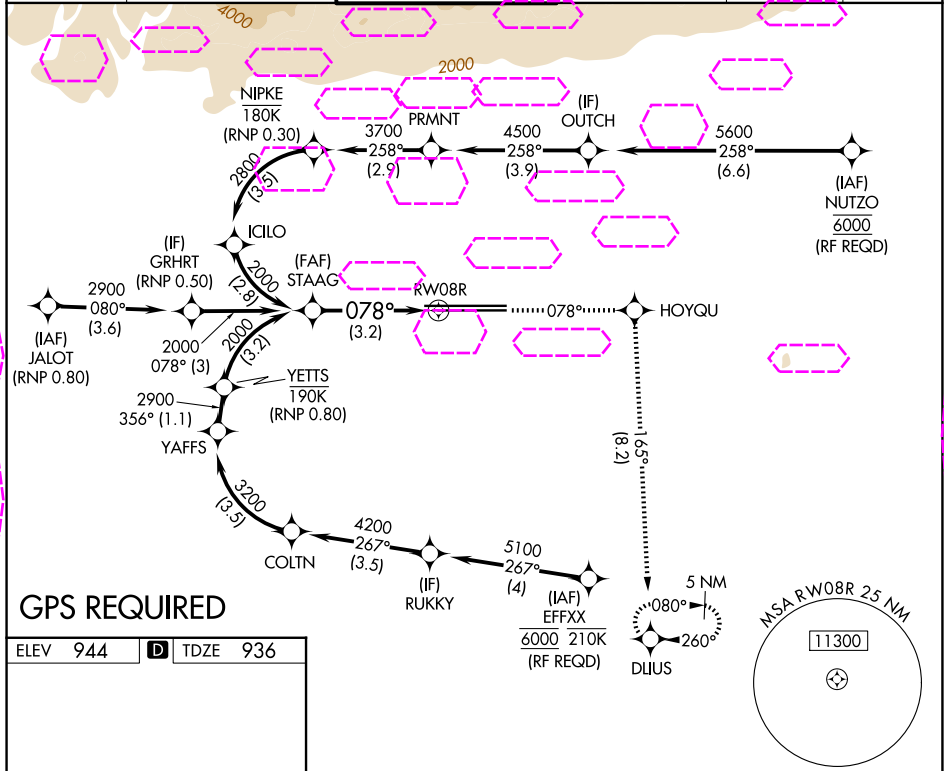
APP CRS	Rwy Ldg	10200
078°	TDZE	936
	Apt Elev	944

RNAV (RNP) Z RWY 8R

ONTARIO INTL (ONT)

NA	For uncompensated Baro-VNAV systems, procedure NA below 2°C (36°F) or above 54°C (130°F).	MISSED APPROACH: Climb to 5300 on track 078° to HOYQU and on track 165° to DLIUS and hold, continue climb-in-hold to 5300.
----	---	--

D-ATIS 124.25	SOCAL APP CON 127.0 318.2	ONTARIO TOWER 120.6 360.775	GND CON 121.9 257.8	CLNC DEL 132.9	CPDLC
------------------	------------------------------	--------------------------------	------------------------	-------------------	-------

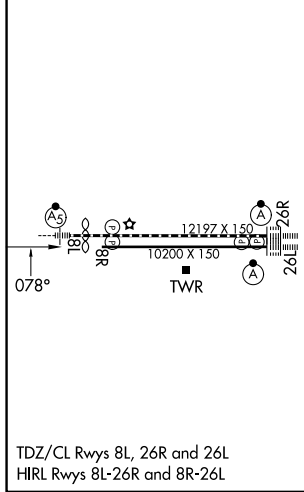


SW-3, 07 AUG 2025 to 04 SEP 2025

SW-3, 07 AUG 2025 to 04 SEP 2025

GPS REQUIRED

ELEV	944	TDZE	936
------	-----	------	-----



VGSI and RNAV glidepath not coincident (VGSI Angle 3.00/TCH 65).				<div>5300</div> <div>↑</div> <div>tr 078°</div>		<div>HOYQU</div> <div>✦</div> <div>tr 165°</div>		<div>DLIUS</div> <div>✦</div> <div></div>	
				See planview for multiple IF locations.					
<div>2000</div> <div>GP 3.00°</div> <div>TCH 60</div>				<div>2000</div> <div>078°</div> <div>3.2 NM</div>		<div>RW08R</div>			
CATEGORY		A		B		C		D	
RNP 0.30 DA		1342-1 ³ / ₈ 406 (400-1 ³ / ₈)							
AUTHORIZATION REQUIRED									

ONTARIO, CALIFORNIA
Orig 27APR17

34°03'N-117°36'W

ONTARIO INTL (ONT)
RNAV (RNP) Z RWY 8R