

ONTARIO, CALIFORNIA

AL-965 (FAA)

25163

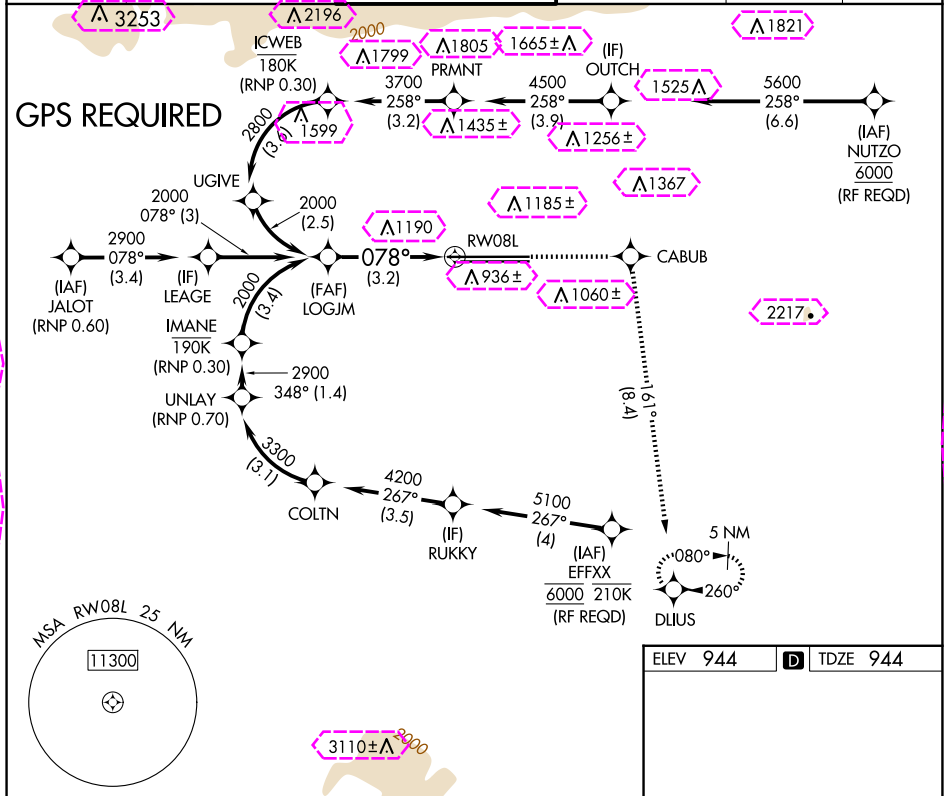
APP CRS	Rwy Ldg	11200
078°	TDZE	944
	Apt Elev	944

# RNAV (RNP) Z RWY 8L

ONTARIO INTL (ONT)

NA	For uncompensated Baro-VNAV systems, procedure NA below 2°C (36°F) or above 54°C (130°F).	MALSR	MISSED APPROACH: Climb to 5300 direct CABUB on track 161° to DLIUS and hold, continue climb-in-hold to 5300.
----	---	-------	--

D-ATIS 124.25	SOCAL APP CON 127.0 318.2	ONTARIO TOWER 120.6 360.775	GND CON 121.9 257.8	CLNC DEL 132.9	CPDLC
------------------	------------------------------	--------------------------------	------------------------	-------------------	-------



VGSi and RNAV glidepath not coincident (VGSi Angle 3.00/TCH 62).		5300	CABUB	tr 161°	DLIUS
		See planview for multiple IF locations.			
CATEGORY	A	B	C	D	
RNP 0.30 DA	1490-13 $\frac{1}{8}$ 546 (600-1 $\frac{1}{8}$ )				
<b>AUTHORIZATION REQUIRED</b>					
TDZ/CL Rwy 8L, 26R and 26L HIRL Rwy 8L-26R and 8R-26L					

ONTARIO, CALIFORNIA

Amtd 1 27APR17

34°03'N-117°36'W

ONTARIO INTL (ONT)

# RNAV (RNP) Z RWY 8L

