

ONTARIO, CALIFORNIA

AL-965 (FAA)

25163

APP CRS	Rwy Ldg	12197
258°	TDZE	932
	Apt Elev	944

RNAV (RNP) Z RWY 26R

ONTARIO INTL (ONT)

RNP AR APCH - GPS.

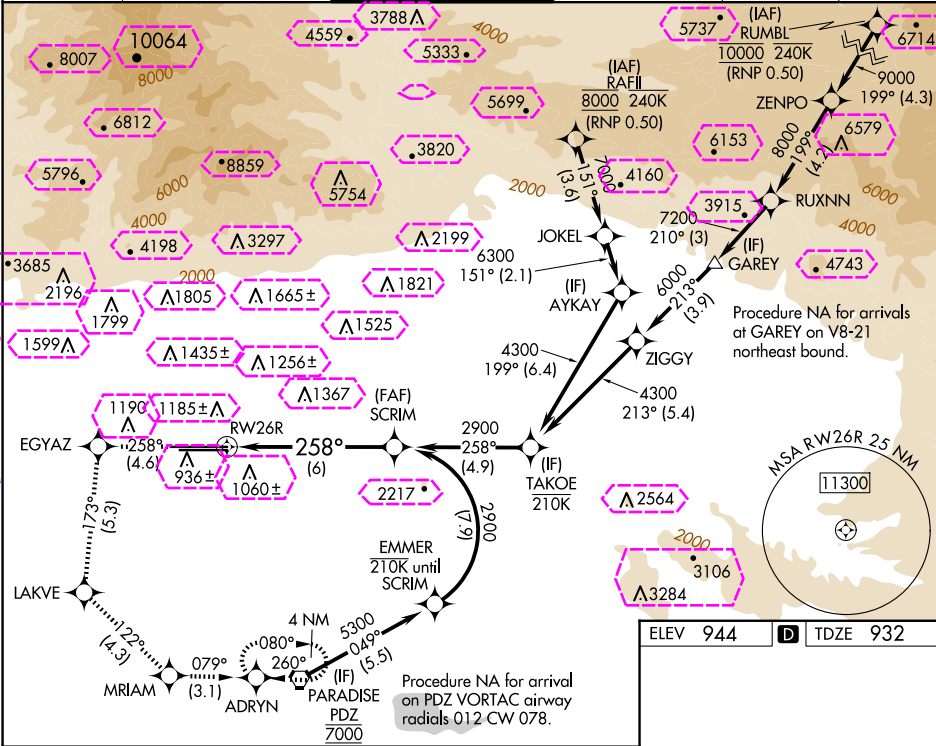
▼ For uncompensated Baro-VNAV systems, procedure NA below 1°C or above 54°C. For inop ALS, increase RNP 0.12 visibility all Cats to RVR 4500, RNP 0.21 visibility all Cats to RVR 5500, RNP 0.30 visibility all Cats to RVR 6000.

ALSF-2



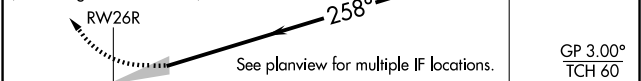
MISSED APPROACH: Climb to 3400 on track 258° to EGYAZ and track 173° to LAKVE and track 122° to MRIAM and on track 079° to ADRYN and hold.

D-ATIS	SOCAL APP CON	ONTARIO TOWER	GND CON	CLNC DEL	CPDLC
124.25	127.0 318.2	120.6 360.775	121.9 257.8	132.9	



3400	EGYAZ	LAKVE	MRIAM	ADRYN	SCRIM
tr 258°	tr 173°	tr 122°	tr 079°		2900

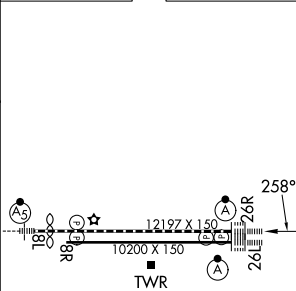
VGSI and RNAV glidepath not coincident (VGSI Angle 3.00/TCH 75).



CATEGORY	A	B	C	D
RNP 0.12 DA		1239/40	307 (300-¾)	
RNP 0.21 DA		1297/40	365 (400-¾)	
RNP 0.30 DA		1321/40	389 (400-¾)	

AUTHORIZATION REQUIRED

ELEV 944 **D** TDZE 932



TDZ/CL Rws 8L, 26R and 26L
HIRL Rws 8L-26R and 8R-26L

ONTARIO, CALIFORNIA

Amtd 3 24MAR22

34°03'N-117°36'W

ONTARIO INTL (ONT)

RNAV (RNP) Z RWY 26R

ONTARIO, CALIFORNIA


AL-965 (FAA)

25219

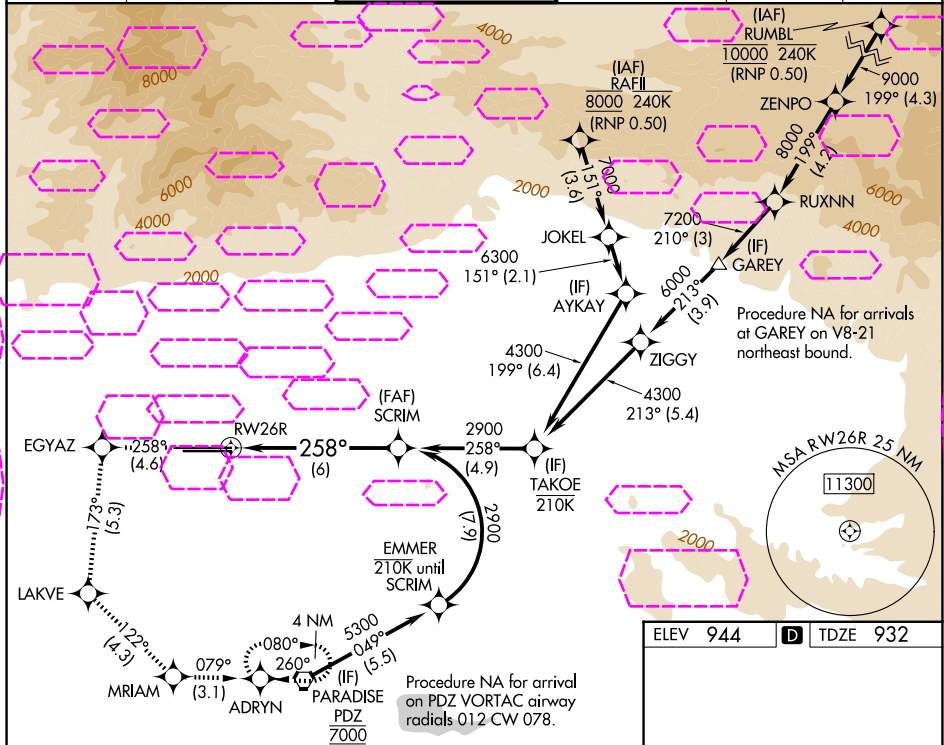
APP CRS	Rwy Ldg	12197
258°	TDZE	932
	Apt Elev	944

RNAV (RNP) Z RWY 26R

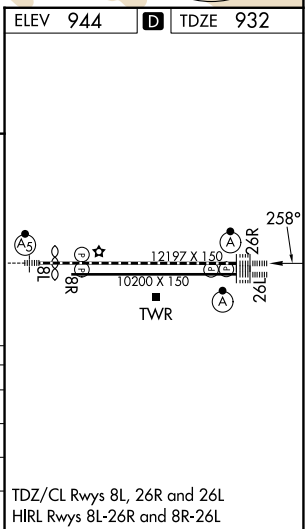
ONTARIO INTL (ONT)

RNP AR APCH - GPS.	ALSF-2 	MISSED APPROACH: Climb to 3400 on track 258° to EGYAZ and track 173° to LAKVE and track 122° to MARIAM and on track 079° to ADRYN and hold.
▼ For uncompensated Baro-VNAV systems, procedure NA below 1°C or above 54°C. For inop ALS, increase RNP 0.12 visibility all Cats to RVR 4500, RNP 0.21 visibility all Cats to RVR 5500, RNP 0.30 visibility all Cats to RVR 6000.		

D-ATIS 124.25	SOCAL APP CON 127.0 318.2	ONTARIO TOWER 120.6 360.775	GND CON 121.9 257.8	CLNC DEL 132.9	CPDLC
------------------	------------------------------	--------------------------------	------------------------	-------------------	-------



3400	EGYAZ	LAKVE	MARIAM	ADRYN	SCRIM
tr 258°	tr 173°	tr 122°	tr 079°	tr 079°	2900
VGSi and RNAV glidepath not coincident (VGSi Angle 3.00/TCH 75).					
RWY 26R					
See planview for multiple IF locations.					
GP 3.00° TCH 60					
CATEGORY	A	B	C	D	
RNP 0.12 DA		1239/40	307 (300-¾)		
RNP 0.21 DA		1297/40	365 (400-¾)		
RNP 0.30 DA		1321/40	389 (400-¾)		
AUTHORIZATION REQUIRED					



ONTARIO, CALIFORNIA
Amdt 3 24MAR22

34°03'N-117°36'W

ONTARIO INTL (ONT) RNAV (RNP) Z RWY 26R