

ONTARIO, CALIFORNIA

AL-965 (FAA)

25163

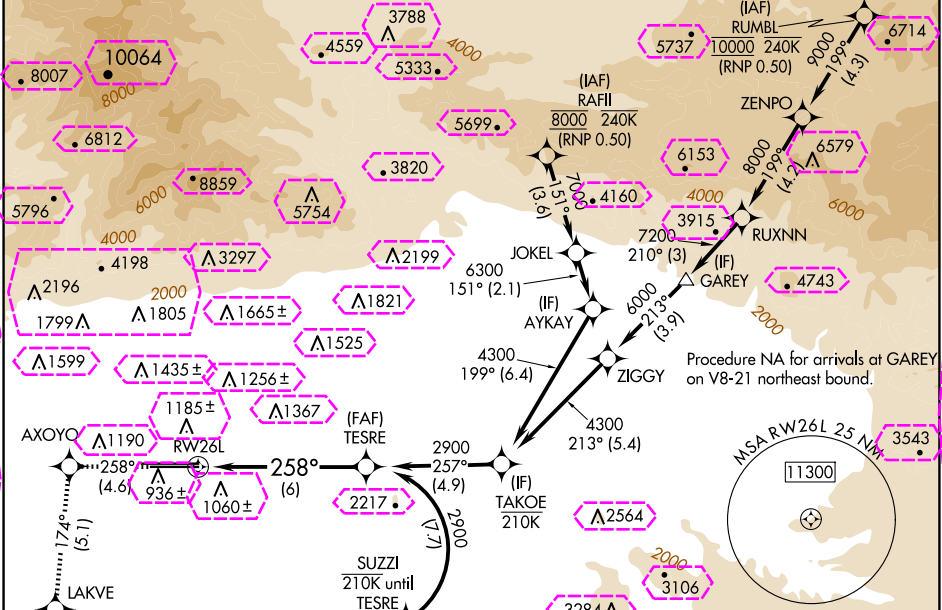
APP CRS	Rwy Ldg	10200
258°	TDZE	926
	Apt Elev	944

RNAV (RNP) Z RWY 26L

ONTARIO INTL (ONT)

RNP AR APCH - GPS.	ALSF-2	MISSED APPROACH: Climb to 3400 on track 258° to AXOYO and track 174° to LAKVE and track 122° to MRIAM and track 079° to ADRYN and hold.
▼ For uncompensated Baro-VNAV systems, procedure NA below 1°C or above 54°C. For inop ALS, increase RNP 0.10 visibility all Cats to RVR 4500, RNP 0.17 visibility all Cats to RVR 5000, RNP 0.30 visibility all Cats to RVR 6000.		

D-ATIS	SOCAL APP CON	ONTARIO TOWER	GND CON	CLNC DEL	CPDLC
124.25	127.0 318.2	120.6 360.775	121.9 257.8	132.9	



ELEV 944 TDZE 926

3400 AXOYO tr 258°

tr 174° LAKVE

tr 122° MRIAM

tr 079° ADRYN

TESRE 2900

VGSI and RNAV glidepath not coincident (VGSI Angle 3.00/TCH 74).

RW26L

See planview for multiple IF locations.

GP 3.00° TCH 58

CATEGORY	A	B	C	D
RNP 0.10 DA	1203/24	277 (300-½)		
RNP 0.17 DA	1245/24	319 (400-½)		
RNP 0.30 DA	1322/35	396 (400-¾)		

AUTHORIZATION REQUIRED

TDZ/CL Rwy 8L, 26R and 26L

HIRL Rwy 8L-26R and 8R-26L

ONTARIO, CALIFORNIA

Amcl 3 24MAR22

34°03'N-117°36'W

ONTARIO INTL (ONT)

RNAV (RNP) Z RWY 26L

ONTARIO, CALIFORNIA

AL-965 (FAA)

25219

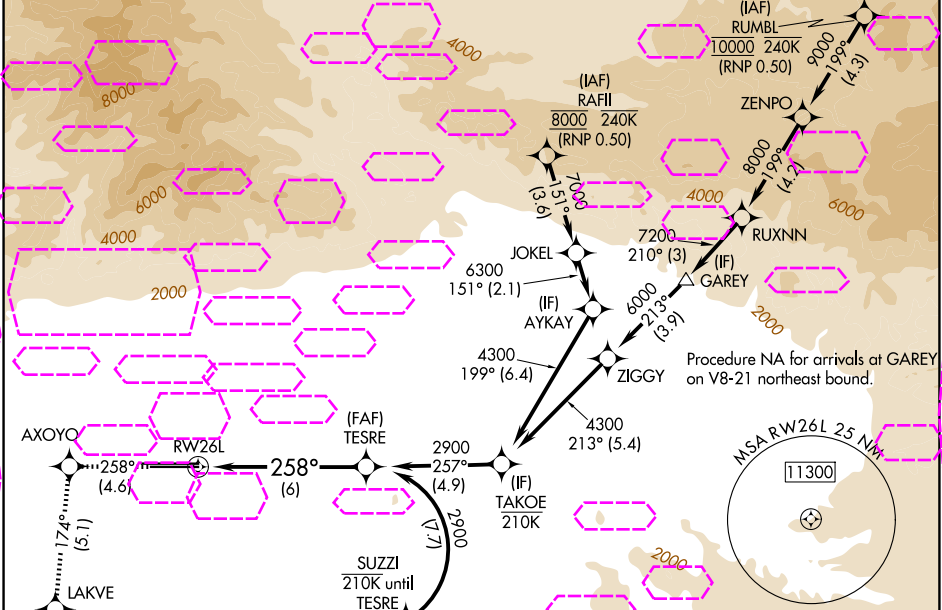
APP CRS	Rwy Ldg	10200
258°	TDZE	926
	Apt Elev	944

RNAV (RNP) Z RWY 26L

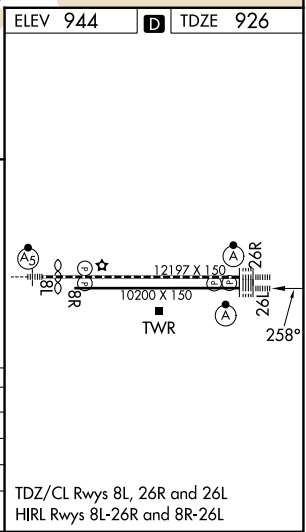
ONTARIO INTL (ONT)

RNP AR APCH - GPS.	ALSF-2	MISSED APPROACH: Climb to 3400 on track 258° to AXOYO and track 174° to LAKVE and track 122° to MRIAM and track 079° to ADRYN and hold.
For uncompensated Baro-VNAV systems, procedure NA below 1°C or above 54°C. For inop ALS, increase RNP 0.10 visibility all Cats to RVR 4500, RNP 0.17 visibility all Cats to RVR 5000, RNP 0.30 visibility all Cats to RVR 6000.		

D-ATIS	SOCAL APP CON	ONTARIO TOWER	GND CON	CLNC DEL	CPDLC
124.25	127.0 318.2	120.6 360.775	121.9 257.8	132.9	



3400	AXOYO	LAKVE	MRIAM	ADRYN	TESRE
↑ tr 258°	174°	122°	079°		2900
VGSI and RNAV glidepath not coincident (VGSI Angle 3.00/TCH 74).					
RW26L					
See planview for multiple IF locations.					
6 NM					
CATEGORY	A	B	C	D	
RNP 0.10 DA		1203/24	277 (300-½)		
RNP 0.17 DA		1245/24	319 (400-½)		
RNP 0.30 DA		1322/35	396 (400-¾)		



AUTHORIZATION REQUIRED

ONTARIO, CALIFORNIA
Amdt 3 24MAR22

34°03'N-117°36'W

ONTARIO INTL (ONT)
RNAV (RNP) Z RWY 26L

SW-3, 07 AUG 2025 to 04 SEP 2025

SW-3, 07 AUG 2025 to 04 SEP 2025