

ONTARIO, CALIFORNIA

AL-965 (FAA)

25163

LOC I-AOD 109.7	APP CRS 078°	Rwy Ldg 11200 944 Apt Elev 944	8L 8R 10200 936 944
---------------------------	------------------------	--	--

ILS or LOC RWY 8L

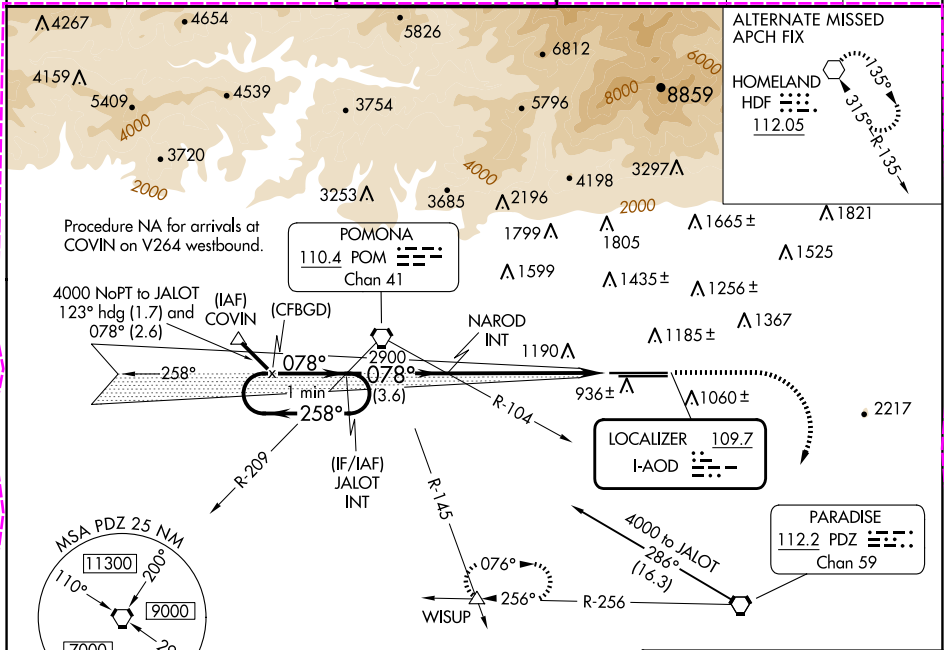
ONTARIO INTL (ONT)

⚠ Circling NA north of Rwy 8L-26R.
* RVR 1800 authorized with the use of FD or AP or HUD to DA.

MALS Rwy 8L

MISSED APPROACH: Climb to 1900 then climbing right turn to 4000 direct PDZ VORTAC then on PDZ R-256 to WISUP INT and hold.

D-ATIS 124.25	SOCAL APP CON 127.0 318.2	ONTARIO TOWER 120.6 360.775	GND CON 121.9 257.8	CLNC DEL 132.9	CPDLC
-------------------------	-------------------------------------	---------------------------------------	-------------------------------	--------------------------	-------



ELEV 944	TDZE 8L 944	TDZE 8R 936
----------	-------------	-------------

One Minute Holding Pattern

4000 ← 258° 078° → 2900

GS 3.00° TCH 45

3.6 NM 6 NM

VGSI and ILS glidepath not coincident (VGSI Angle 3.00/TCH 62).

CATEGORY	A	B	C	D
S-ILS 8L*	1144/24 200 (200-½)			
S-LOC 8L	1440/24 496 (500-½)		1440/50 496 (500-1)	
SIDESTEP 8R	1440-1 504 (500-1)		1440-1⅜ 504 (500-1⅜)	
CIRCLING	1440-1 496 (500-1)		1540-1½ 596 (600-1½) 1600-2 656 (700-2)	

1219Z X 150

10200 X 150

TWR

26L

ONTARIO, CALIFORNIA
Amdt 9B 26MAY16

34°03'N-117°36'W

ONTARIO INTL (ONT) ILS or LOC RWY 8L

SW-3, 10 JUL 2025 to 07 AUG 2025

SW-3, 10 JUL 2025 to 07 AUG 2025

ONTARIO, CALIFORNIA

AL-965 (FAA)

25219

LOC I-AOD 109.7	APP CRS 078°	Rwy Ldg 11200 10200 TDZE 944 936 Apt Elev 944 944
---------------------------	------------------------	---

ILS or LOC RWY 8L

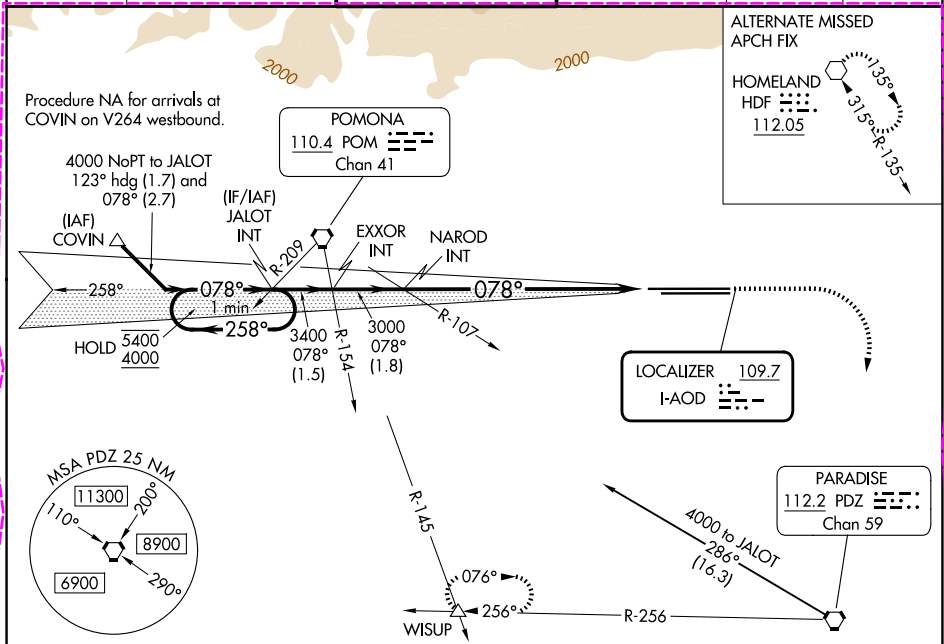
ONTARIO INTL (ONT)

⚠ Circling NA north of Rwy 8L-26R. For inop ALS, increase S-LOC 8L Cats C and D visibility to 1½ SM.
* RVR 1800 authorized with the use of FD or AP or HUD to DA.

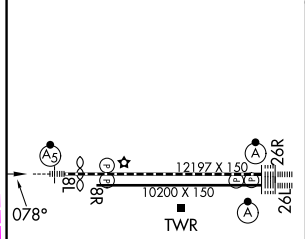
MALSR
Rwy 8L
AS

MISSED APPROACH: Climb to 2200 then climbing right turn to 4000 direct PDZ VORTAC and on PDZ VORTAC R-256 to WISUP INT and hold.

D-ATIS 124.25	SOCAL APP CON 127.0 318.2	ONTARIO TOWER 120.6 360.775	GND CON 121.9 257.8	CLNC DEL 132.9	CPDLC
-------------------------	-------------------------------------	---------------------------------------	-------------------------------	--------------------------	-------



ELEV 944	D TDZE 8L 944 TDZE 8R 936
-----------------	---



TDZ/CL Rwsy 8L, 26L and 26R HIRL Rwsy 8L-26R and 8R-26L FAF to MAP 6.3 NM					
Knots	60	90	120	150	180
Min:Sec	6:18	4:12	3:09	2:31	2:06

VGSI and ILS glidepath not coincident (VGSI Angle 3.00/TCH 62).				
One Minute Holding Pattern				
JALOT INT EXXOR INT NAROD INT				
5400 ← 258° 4000 → 078° 078° 3400 3000 3000				
GS 3.00° TCH 45				
1.5 NM 1.8 NM 6.3 NM				
CATEGORY	A	B	C	D
S-ILS 8L*	1144/24 200 (200-½)			
S-LOC 8L	1460/24	516 (600-½)	1460/55	516 (600-1)
SIDESTEP 8R	1460/55	524 (600-1)	1460-1½ 524 (600-1½)	1460-2 524 (600-2)
CIRCLING	1460-1	516 (600-1)	1540-1½ 596 (600-1½)	1600-2 656 (700-2)

ONTARIO, CALIFORNIA

Amdt 10 07AUG25

34°03'N-117°36'W

ILS or LOC RWY 8L

ONTARIO INTL (ONT)

SW-3, 07 AUG 2025 to 04 SEP 2025