

ONTARIO, CALIFORNIA

AL-965 (FAA)

25163

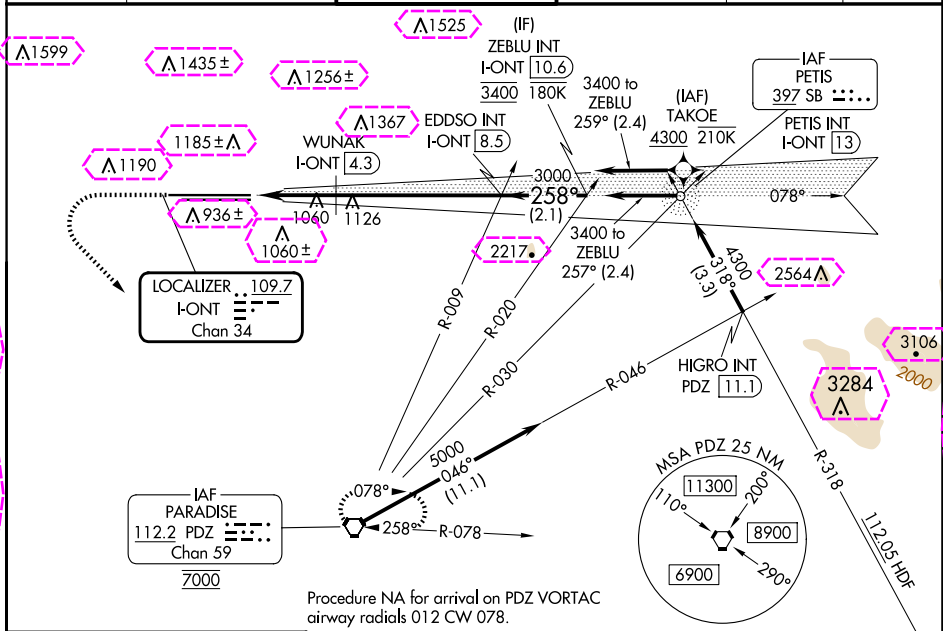
LOC/DME I-ONT	APP CRS	Rwy Ldg	26R	26L
109.7	258°	TDZE	12197	10200
Chan 34		Apt Elev	932	926
			944	944

ILS or LOC RWY 26R

ONTARIO INTL (ONT)

RNP APCH - GPS. From TAKOE.		ALSIF-2 Rwy 26R	ALSIF-2 Rwy 26L	MISSED APPROACH: Climb to 2800 then climbing left turn to 5400 direct PDZ VORTAC and hold, continue climb-in-hold to 5400.	
Circling NA north of Rwy 8L-26R. For inop ALS, increase S-LOC 26R Cat C and D visibility to 2 SM.					

D-ATIS	SOCAL APP CON	ONTARIO TOWER	GND CON	CLNC DEL	CPDLC
124.25	127.0 318.2	120.6 360.775	121.9 257.8	132.9	



Procedure NA for arrival on PDZ VORTAC
airway radials 012 CW 078.

ELEV 944	D	TDZE 26R 932	2800	5400	PDZ	VGSI and ILS glidepath not coincident (VGSI Angle 3.00/TCH 75).	ZEBLU INT I-ONT 10.6
TDZE 26L 926							
			I-ONT 2.2	I-ONT 3.3	WUNAK I-ONT 4.3	EDDSO INT I-ONT 8.5	
			1.2 NM	1 NM	4.1 NM	2.1 NM	
			A	B	C	D	
		S-ILS 26R	1132/18 200 (200-½)				
		S-LOC 26R	1680/24 748 (800-½)	1680/40 748 (800-¾)	1680-1¾ 754 (800-1¾)	748 (800-1¾)	
		SIDESTEP 26L	1680/55	754 (800-1)	1680-1¾ 754 (800-1¾)	1680-2 754 (800-2)	
		CIRCLING	1680-1 736 (800-1)	1680-1¼ 736 (800-1¼)	1680-2¼ 736 (800-2¼)	1680-2½ 736 (800-2½)	
		WUNAK FIX MINIMUMS (DME REQUIRED)					
		S-LOC 26R	1320/24	388 (400-½)	1320/35	388 (400-¾)	

FAC to MAP 6.3 NM					
Knots	60	90	120	150	180
Min:Sec	6:18	4:12	3:09	2:31	2:06

ONTARIO, CALIFORNIA
Amdt 6 10AUG23

34°03'N-117°36'W

ONTARIO INTL (ONT) ILS or LOC RWY 26R

SW-3, 10 JUL 2025 to 07 AUG 2025

SW-3, 10 JUL 2025 to 07 AUG 2025

ONTARIO, CALIFORNIA

AL-965 (FAA)

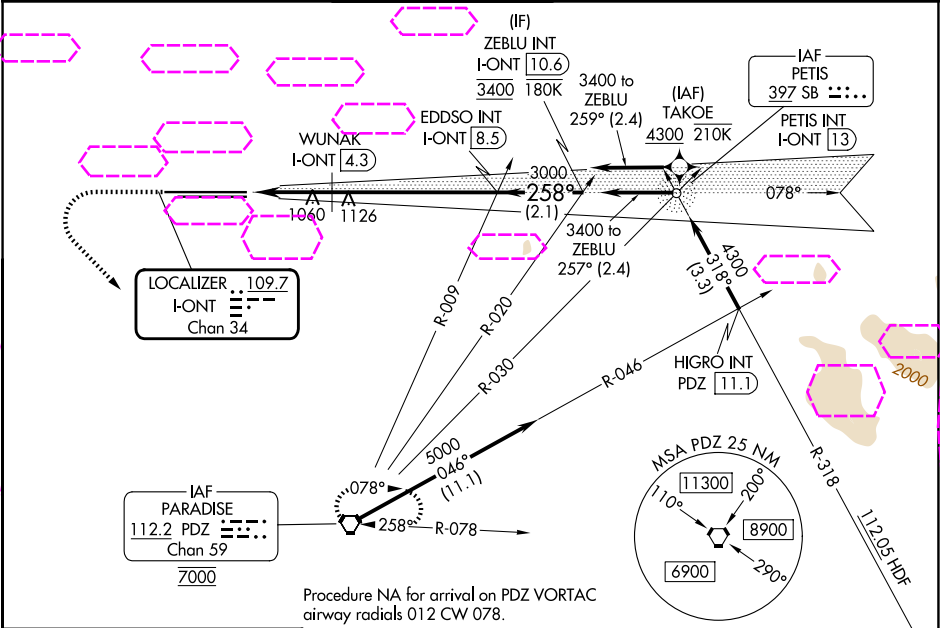
25219

LOC/DME I-ONT 109.7 Chan 34	APP CRS 258°	Rwy Ldg TDZE 12197 Apt Elev 932	26R 10200 926 944	26L 10200 926 944
---	------------------------	---	---	---

ILS or LOC RWY 26R
ONTARIO INTL (ONT)

RNP APCH - GPS. From TAKOE.		ALSIF-2 Rwy 26R	ALSIF-2 Rwy 26L	MISSED APPROACH: Climb to 2800 then climbing left turn to 5400 direct PDZ VORTAC and hold, continue climb-in-hold to 5400.	
Circling NA north of Rwy 8L-26R. For inop ALS, increase S-LOC 26R Cat C and D visibility to 2 SM.					

D-ATIS 124.25	SOCAL APP CON 127.0 318.2	ONTARIO TOWER 120.6 360.775	GND CON 121.9 257.8	CLNC DEL 132.9	CPDLC
-------------------------	-------------------------------------	---------------------------------------	-------------------------------	--------------------------	-------



Procedure NA for arrival on PDZ VORTAC
airway radials 012 CW 078.

ELEV 944	D	TDZE 26R 932 TDZE 26L 926	2800	5400	PDZ	VGSI and ILS glidepath not coincident (VGSI Angle 3.00/TCH 75).	ZEBLU INT I-ONT [10.6]
			I-ONT [2.2]	I-ONT [3.3]	WUNAK I-ONT [4.3]	EDDSO INT I-ONT [8.5]	
			1.2 NM	1 NM	4.1 NM	2.1 NM	
			A	B	C	D	
			S-ILS 26R	1132/18 200 (200-½)			
			S-LOC 26R	1680/24 748 (800-½)	1680/40 748 (800-¾)	1680-1¾ 754 (800-1¾)	748 (800-1¾)
			SIDESTEP 26L	1680/55	754 (800-1)	1680-1¾ 754 (800-1¾)	1680-2 754 (800-2)
			CIRCLING	1680-1 736 (800-1)	1680-1¼ 736 (800-1¼)	1680-2¼ 736 (800-2¼)	1680-2½ 736 (800-2½)
			WUNAK FIX MINIMUMS (DME REQUIRED)				
			S-LOC 26R	1320/24	388 (400-½)	1320/35	388 (400-¾)

TDZ/CL Rwy 8L, 26L and 26R
HIRL Rwy 8L-26R and 8R-26L

FAF to MAP 6.3 NM					
Knots	60	90	120	150	180
Min:Sec	6:18	4:12	3:09	2:31	2:06

ONTARIO, CALIFORNIA
Amdt 6 10AUG23

34°03'N-117°36'W

ONTARIO INTL (ONT)
ILS or LOC RWY 26R

SW-3, 07 AUG 2025 to 04 SEP 2025

SW-3, 07 AUG 2025 to 04 SEP 2025