

ONTARIO, CALIFORNIA

AL-965 (FAA)

25163

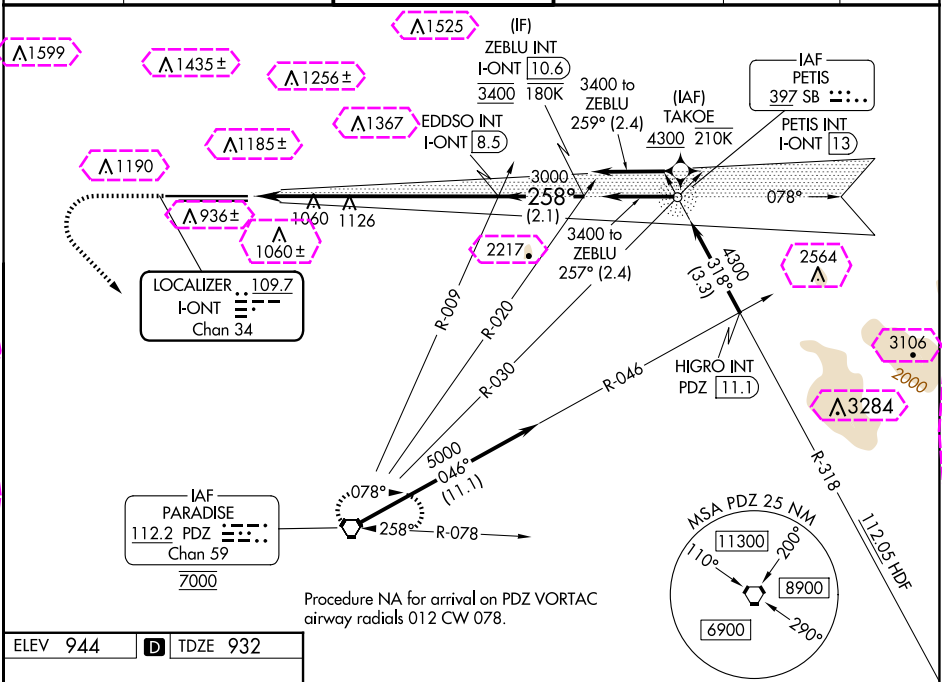
LOC/DME I-ONT 109.7 Chan 34	APP CRS 258°	Rwy Ldg TDZE 932 Apt Elev 944
---	------------------------	---

ILS RWY 26R (CAT II & III)

ONTARIO INTL (ONT)

RNP APCH - GPS. From TAKOE.		ALSF-2 	MISSED APPROACH: Climb to 2800 then climbing left turn to 5400 direct PDZ VORTAC and hold, continue climb-in-hold to 5400.		
-----------------------------	--	------------	--	--	--

D-ATIS 124.25	SOCAL APP CON 127.0 318.2	ONTARIO TOWER 120.6 360.775	GND CON 121.9 257.8	CLNC DEL 132.9	CPDLC
-------------------------	-------------------------------------	---------------------------------------	-------------------------------	--------------------------	-------

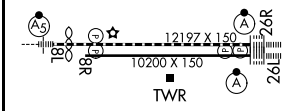


SW-3, 10 JUL 2025 to 07 AUG 2025

SW-3, 10 JUL 2025 to 07 AUG 2025

ELEV 944	D	TDZE 932
-----------------	----------	-----------------

2800	5400	PDZ	VGSI and ILS glidepath not coincident (VGSI Angle 3.00/TCH 75).	ZEBLU INT I-ONT 10.6
CATEGORY	A	B	C	D
S-ILS 26R	CAT II RA 100/12 100 DA 1032			
S-ILS 26R	CAT III RVR 03			



TDZ/CL Rwy 8L, 26L and 26R
HRL Rwy 8L-26R and 8R-26L

CATEGORY II & III ILS - SPECIAL AIRCREW & AIRCRAFT CERTIFICATION REQUIRED

ONTARIO, CALIFORNIA
Amdt 6 10AUG23

ONTARIO INTL (ONT)
34°03'N-117°36'W
ILS RWY 26R (CAT II & III)

