

ONTARIO, CALIFORNIA

AL-965 (FAA)

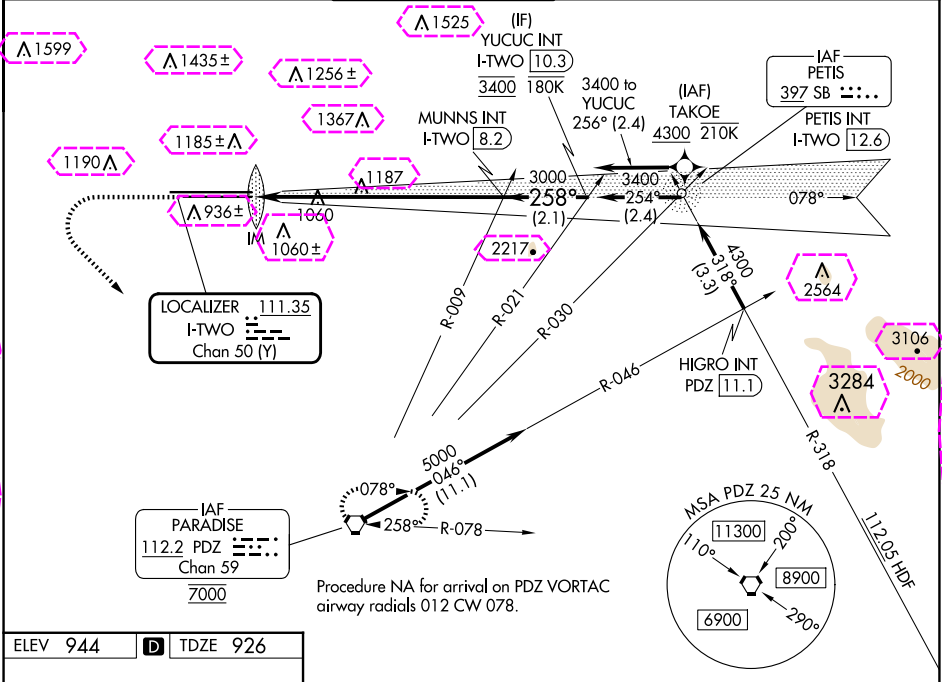
25163

|   |                        |   |
|---|------------------------|---|
| LOC/DME I-TWO<br><b>111.35</b><br>Chan <b>50(Y)</b> | APP CRS<br><b>258°</b> | Rwy Ldg<br>TDZE <b>926</b><br>Apt Elev <b>944</b> |
|---|------------------------|---|

# ILS RWY 26L (CAT II & III)

ONTARIO INTL (ONT)

|                             |                                     |                                       |  |                          |       |
|-----------------------------|-------------------------------------|---------------------------------------|--|--------------------------|-------|
| RNP APCH - GPS. From TAKOE. |                                     | ALSIF-2                               | MISSED APPROACH: Climb to 2800 then climbing left turn to 5400 direct PDZ VORTAC and hold, continue climb-in-hold to 5400. |                          |       |
| D-ATIS<br><b>124.25</b>     | SOCAL APP CON<br><b>127.0 318.2</b> | ONTARIO TOWER<br><b>120.6 360.775</b> | GND CON<br><b>121.9 257.8</b>  | CLNC DEL<br><b>132.9</b> | CPDLC |



|                 |          |                 |
|-----------------|----------|-----------------|
| ELEV <b>944</b> | <b>D</b> | TDZE <b>926</b> |
|-----------------|----------|-----------------|

2800 5400 PDZ

VGSI and ILS glidepath not coincident (VGSI Angle 3.00/TCH 74).

YUCUC INT I-TWO 10.3

MUNNS INT I-TWO 8.2

IM 1025

3000 258° 3400

GS 3.00° TCH 58

1163' 6.3 NM 2.1 NM

| CATEGORY  | A                            | B | C | D |
|-----------|------------------------------|---|---|---|
| S-ILS 26L | CAT II RA 103/12 100 DA 1026 |   |   |   |
| S-ILS 26L | CAT III RVR 06               |   |   |   |

**CATEGORY II & III ILS - SPECIAL AIRCREW & AIRCRAFT CERTIFICATION REQUIRED**

TDZ/CL Rwy 8L, 26L and 26R

HIRL Rwy 8L-26R and 8R-26L

ONTARIO, CALIFORNIA  
Amdt 9 10AUG23

ONTARIO INTL (ONT)  
ILS RWY 26L (CAT II & III)

SW-3, 10 JUL 2025 to 07 AUG 2025

SW-3, 10 JUL 2025 to 07 AUG 2025

ONTARIO, CALIFORNIA

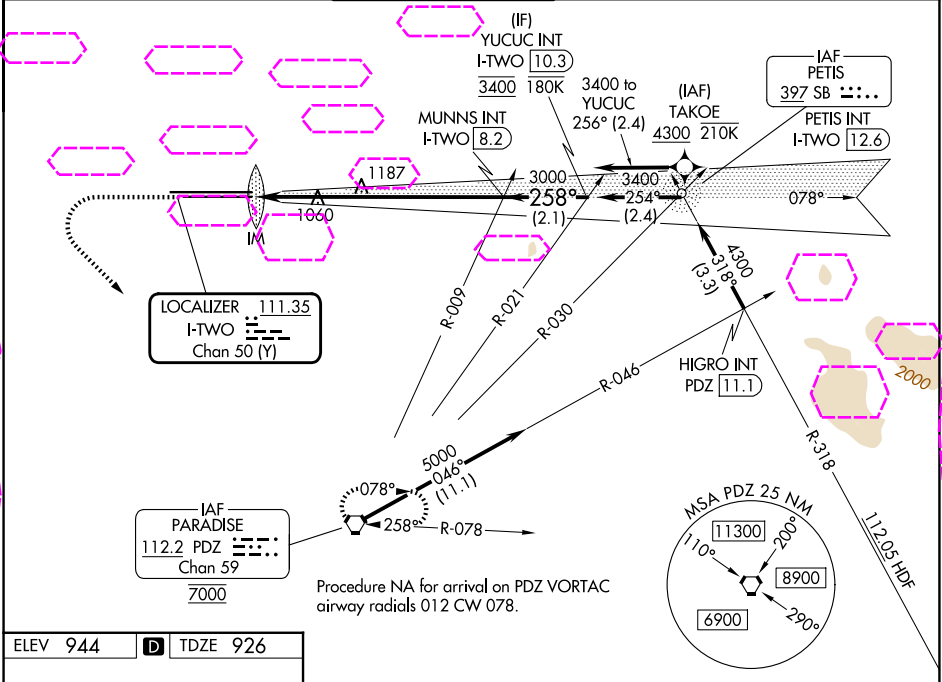
AL-965 (FAA)

25219

|   |                        |   |
|---|------------------------|---|
| LOC/DME I-TWO<br><b>111.35</b><br>Chan <b>50(Y)</b> | APP CRS<br><b>258°</b> | Rwy Ldg<br>TDZE <b>926</b><br>Apt Elev <b>944</b> |
|---|------------------------|---|

ILS RWY 26L (CAT II & III)  
ONTARIO INTL (ONT)

|                             |                                     |                                       |  |                          |       |
|-----------------------------|-------------------------------------|---------------------------------------|--|--------------------------|-------|
| RNP APCH - GPS. From TAKOE. |                                     | ALSIF-2                               | MISSED APPROACH: Climb to 2800 then climbing left turn to 5400 direct PDZ VORTAC and hold, continue climb-in-hold to 5400. |                          |       |
| D-ATIS<br><b>124.25</b>     | SOCAL APP CON<br><b>127.0 318.2</b> | ONTARIO TOWER<br><b>120.6 360.775</b> | GND CON<br><b>121.9 257.8</b>  | CLNC DEL<br><b>132.9</b> | CPDLC |



|                 |          |                 |
|-----------------|----------|-----------------|
| ELEV <b>944</b> | <b>D</b> | TDZE <b>926</b> |
|-----------------|----------|-----------------|

2800 5400 PDZ

VGSI and ILS glidepath not coincident (VGSI Angle 3.00/TCH 74).

YUCUC INT I-TWO 10.3

MUNNS INT I-TWO 8.2

IM 1025

3000 258° 3400

GS 3.00° TCH 58

1163° 6.3 NM 2.1 NM

|           |                              |   |   |   |
|-----------|------------------------------|---|---|---|
| CATEGORY  | A                            | B | C | D |
| S-ILS 26L | CAT II RA 103/12 100 DA 1026 |   |   |   |
| S-ILS 26L | CAT III RVR 06               |   |   |   |

**CATEGORY II & III ILS - SPECIAL AIRCREW & AIRCRAFT CERTIFICATION REQUIRED**

TDZ/CL Rwy 8L, 26L and 26R

HIRL Rwy 8L-26R and 8R-26L

ONTARIO, CALIFORNIA  
Amdt 9 10AUG23

34°03'N-117°36'W  
ILS RWY 26L (CAT II & III)  
ONTARIO INTL (ONT)