

BUTLER, MISSOURI

AL-964 (FAA)

25107

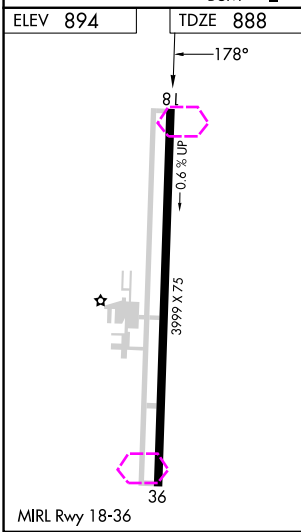
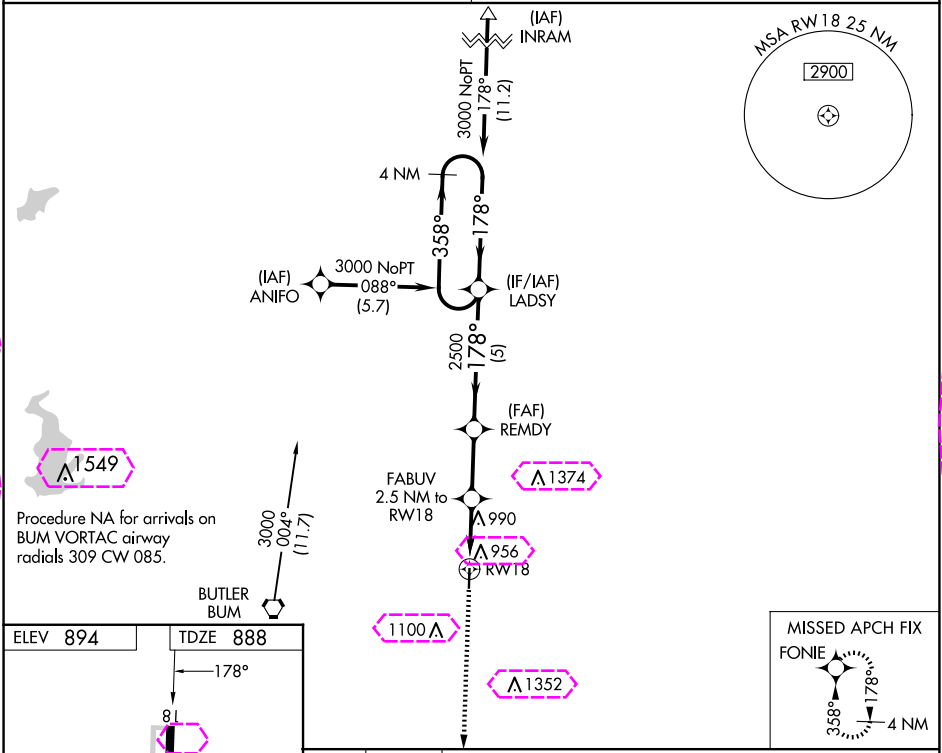
WAAS CH 82630 W18A	APP CRS 178°	Rwy Idg TDZE 888 Apt Elev 894
--	------------------------	---

RNAV (GPS) RWY 18

BUTLER MEML (BUM)

RNP APCH.	MISSED APPROACH: Climb to 4000 direct FONIE and hold, continue climb in hold to 4000.
-----------	---

KANSAS CITY CENTER 125.55 327.0	CTAF 122.9
---	----------------------



4000

↑

FONIE

*LNAV only

RW18

FABUV
2.5 NM to RW18

REMDY

LADSY

4 NM Holding Pattern

358° →

← 178°

3000

GP 3.00°
TCH 37

2500

1700*

2500

2.5 NM

2.5 NM

5 NM

CATEGORY	A	B	C	D
LPV DA	1220-1½	332 (400-1½)	NA	
LNAV/VNAV DA	1220-1½	332 (400-1½)	NA	
LNAV MDA	1340-1	452 (500-1)	NA	

BUTLER, MISSOURI
Orig-B 18JUL19

38°17'N-94°20'W

RNAV (GPS) RWY 18

NC-3, 10 JUL 2025 to 07 AUG 2025

NC-3, 10 JUL 2025 to 07 AUG 2025

BUTLER, MISSOURI

AL-964 (FAA)

25219

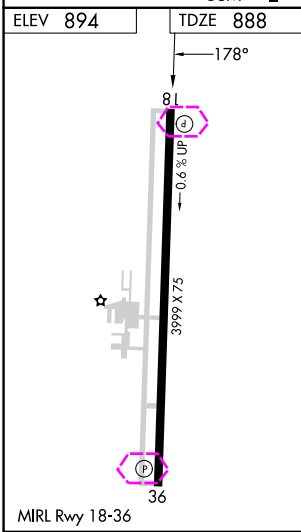
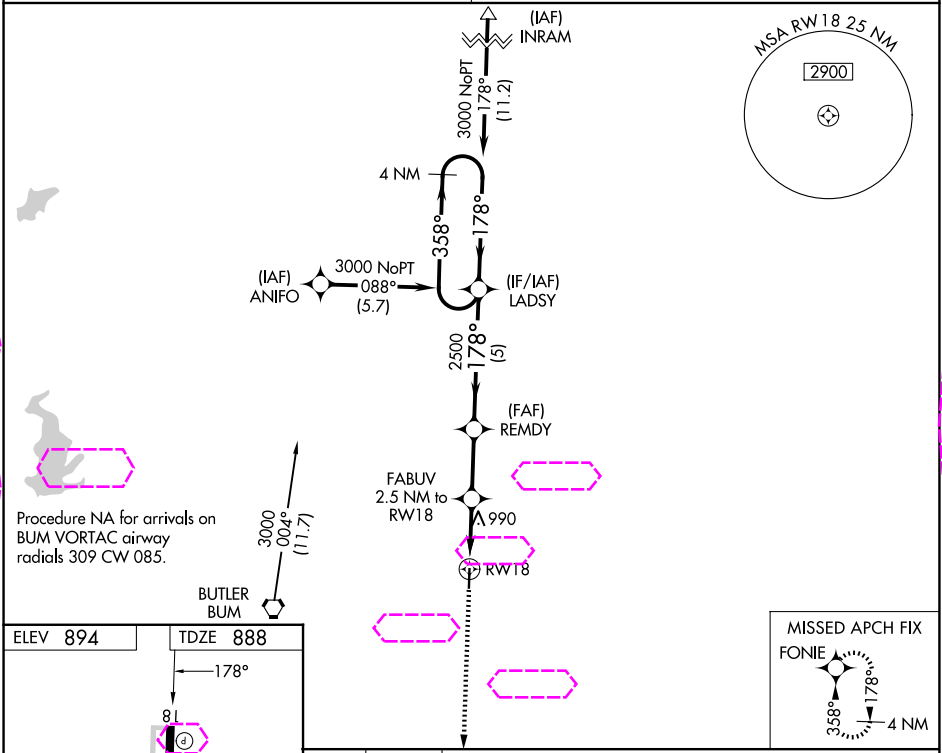
WAAS CH 82630 W18A	APP CRS 178°	Rwy Ldg TDZE 888 Apt Elev 894
--	------------------------	---

RNAV (GPS) RWY 18

BUTLER MEML (BUM)

RNP APCH.	MISSED APPROACH: Climb to 4000 direct FONIE and hold, continue climb in hold to 4000.
-----------	---

KANSAS CITY CENTER 125.55 327.0	CTAF 122.9
---	----------------------



4000

FONIE

↑

✦

*LNAV only

FABUV
2.5 NM to RW18

REMDY

LADSY

4 NM Holding Pattern

358° → 3000

← 178°

1700*

2500

178°

GP 3.00°
TCH 37

RW18

2.5 NM

2.5 NM

5 NM

CATEGORY	A	B	C	D
LPV DA	1220-1⅛	332 (400-1⅛)	NA	
LNAV/VNAV DA	1220-1⅛	332 (400-1⅛)	NA	
LNAV MDA	1340-1	452 (500-1)	NA	

BUTLER, MISSOURI
Orig-B 18JUL19

38°17'N-94°20'W

RNAV (GPS) RWY 18

NC-3, 07 AUG 2025 to 04 SEP 2025

NC-3, 07 AUG 2025 to 04 SEP 2025