

VORTAC CVA <b>113.8</b> Chan 85	APP CRS <b>035°</b>	Rwy Idg TDZE Apt Elev	<b>4001</b> <b>750</b> <b>751</b>
---------------------------------------	------------------------	-----------------------------	-----------------------------------------

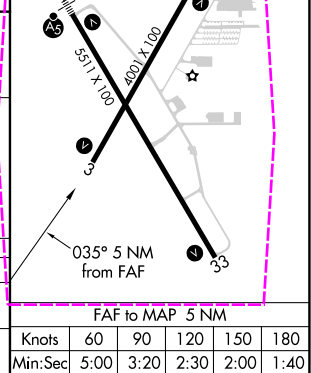
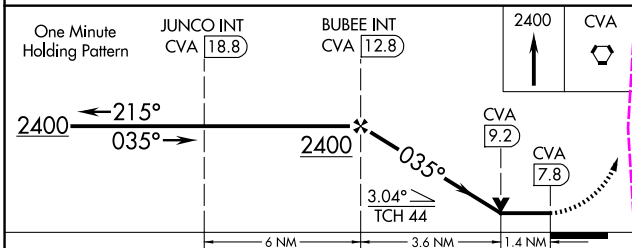
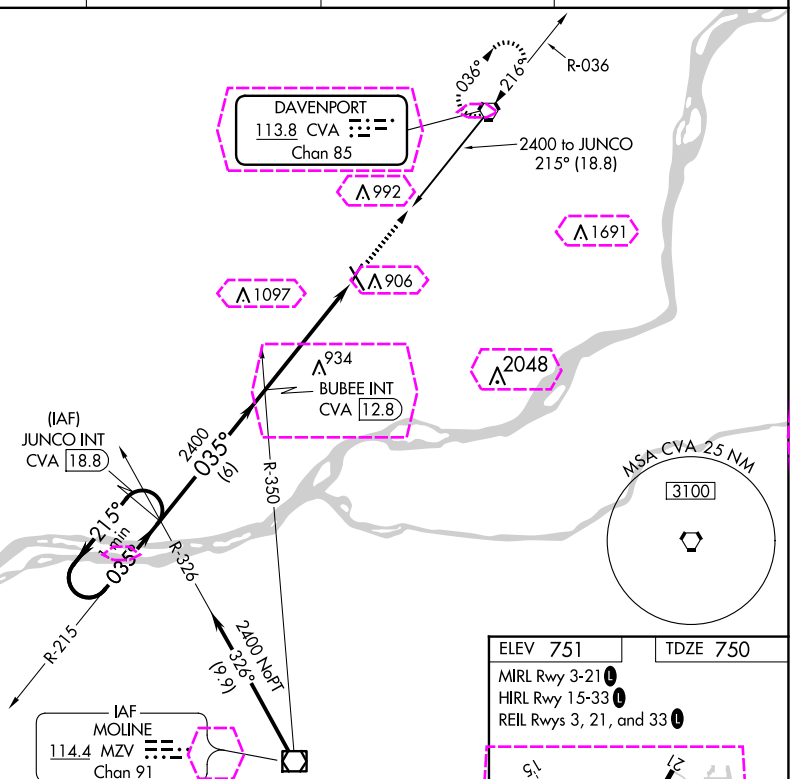
VOR RWY 3  
DAVENPORT MUNI (DVN)



Rwy 3 helicopter visibility reduction below  $\frac{3}{4}$  SM NA.

**MISSED APPROACH:** Climb to 2400  
direct CVA VORTAC and hold.

ASOS <b>120.175</b>	QUAD CITY APP CON ★ <b>125.95 257.8</b>	CLNC DEL <b>118.35</b>	UNICOM <b>123.0 (CTAF) 0</b>
------------------------	--------------------------------------------	---------------------------	---------------------------------



CATEGORY	A	B	C	D
S-3	1240-1 490 (500-1)		1240-1 $\frac{3}{8}$ 490 (500-1 $\frac{3}{8}$ )	1240-1 $\frac{1}{2}$ 490 (500-1 $\frac{1}{2}$ )
<b>C</b> CIRCLING	1300-1 549 (600-1)		1300-1 $\frac{1}{2}$ 549 (600-1 $\frac{1}{2}$ )	1320-2 569 (600-2)

DAVENPORT, IOWA  
Amdt 9C 08OCT20

DAVENPORT MUNI (DVN)  
VOR RWY 3

41°37'N-90°35'W

DAVENPORT, IOWA

AL-949 (FAA)

25219

VORTAC CVA	APP CRS	Rwy Ldg	4001
113.8	035°	TDZE	750
Chan 85		Apt Elev	751

VOR RWY 3  
DAVENPORT MUNI (DVN)

Rwy 3 helicopter visibility reduction below 3/4 SM NA.

MISSED APPROACH: Climb to 2400 direct CVA VORTAC and hold.

ASOS 120.175	QUAD CITY APP CON * 125.95 257.8	CLNC DEL 118.35	UNICOM 123.0 (CTAF) 0
-----------------	-------------------------------------	--------------------	--------------------------

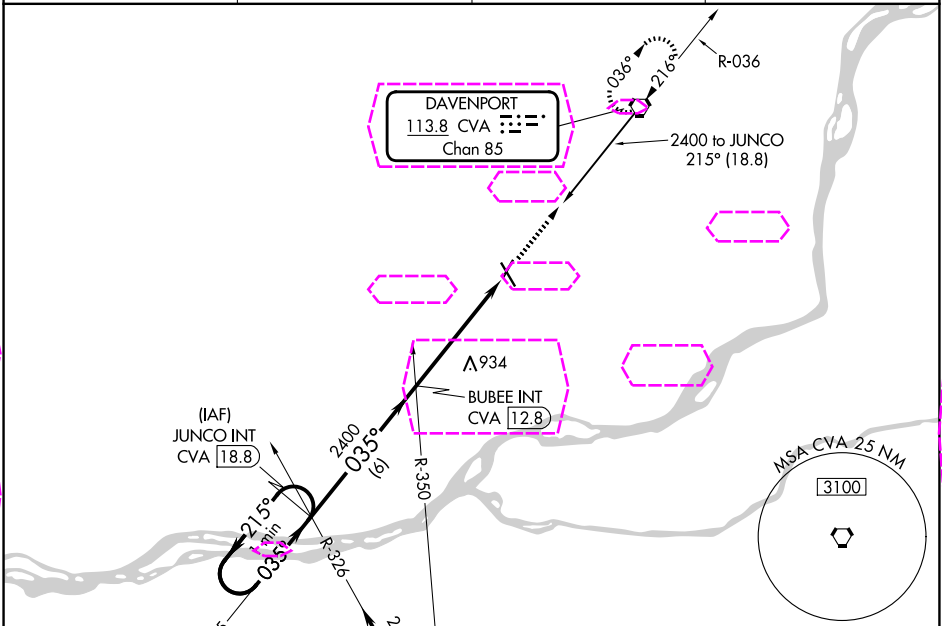


Diagram showing the approach to Chan 91. Key features include:

- 400 NoPT segment with a 3.26° angle and 9:9 ratio.
- IAF, MO LINE, 114.4 MZV, and Chan 91 highlighted in a pink hexagon.
- 215° heading indicated for the R-215 segment.

Diagram showing the One Minute Holding Pattern. Key features include:

- 2400 altitude segment with a 215° heading and a 035° heading.
- 3.04° angle shown for the TCH 44 segment.
- 6 NM, 3.6 NM, and 1.4 NM segments indicated.

CATEGORY	A	B	C	D
S-3	1240-1 490 (500-1)		1240-1 $\frac{3}{8}$ 490 (500-1 $\frac{3}{8}$ )	1240-1 $\frac{1}{2}$ 490 (500-1 $\frac{1}{2}$ )
CIRCLING	1300-1 549 (600-1)		1300-1 $\frac{1}{2}$ 549 (600-1 $\frac{1}{2}$ )	1320-2 569 (600-2)

Diagram showing the FAF to MAP 5 NM. Key features include:

- 400 X 100 segment and 551 X 100 segment.
- 035° heading indicated.
- 5 NM distance indicated.

ELEV 751		TDZE 750				
MIRL Rwy 3-21						
HIRL Rwy 15-33						
REIL Rwy 3, 21, and 33						
FAF to MAP 5 NM						
Knots	60	90	120	150	180	
Min:Sec	5:00	3:20	2:30	2:00	1:40	

DAVENPORT, IOWA  
Amdt 9C 08OCT20

41°37'N-90°35'W

DAVENPORT MUNI (DVN)  
VOR RWY 3