

DAVENPORT, IOWA

AL-949 (FAA)

20282

VORTAC CVA <b>113.8</b> Chan <b>85</b>	APP CRS <b>216°</b>	Rwy Idg TDZE <b>750</b> Apt Elev <b>751</b>	<b>4001</b>
--	------------------------	---	-------------

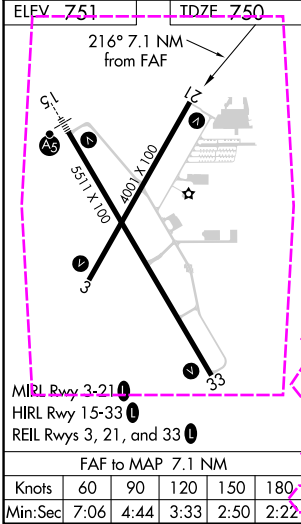
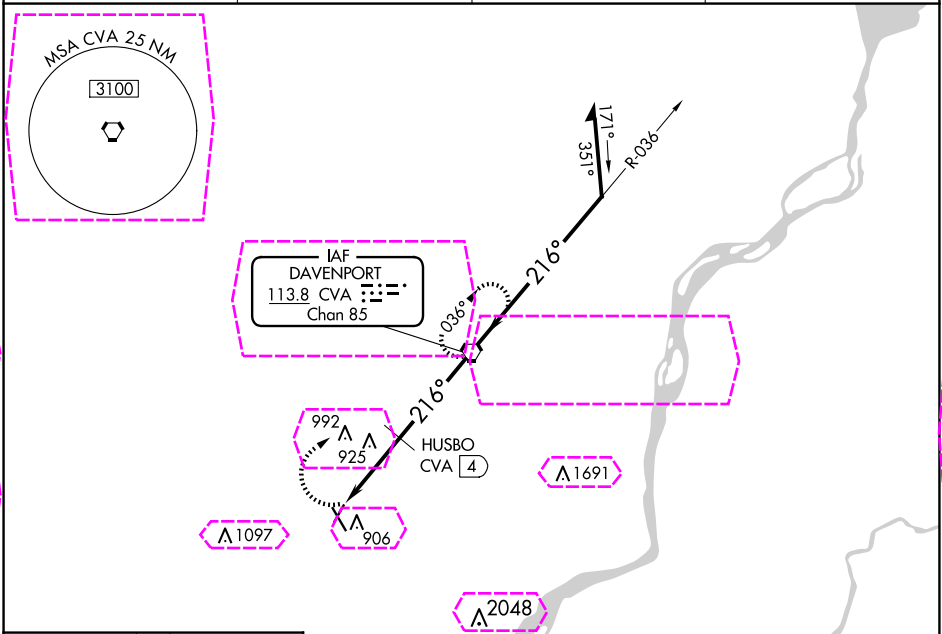
**VOR RWY 21**  
DAVENPORT MUNI (DVN)

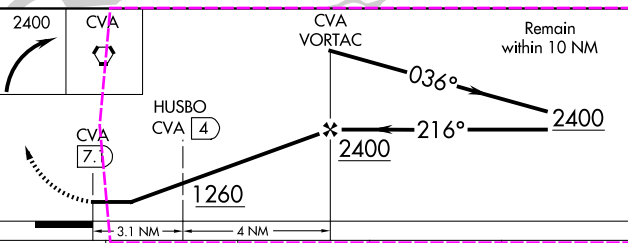
**▽**  
**⚠**

Rwy 21 helicopter visibility reduction below 1 SM NA

MISSED APPROACH: Climbing right turn to 2400 direct CVA VORTAC and hold.

ASOS <b>120.175</b>	QUAD CITY APP CON * <b>125.95 257.8</b>	CLNC DEL <b>118.35</b>	UNICOM <b>123.0 (CTAF) 0</b>
------------------------	--	---------------------------	---------------------------------



				
CATEGORY	A	B	C	D
S-21	1260-1 510 (600-1)		1260-1 510 (600-1)	510 (600-1)
CIRCLING	1300-1 549 (600-1)		1300-1 549 (600-1)	1320-2 569 (600-2)
HUSBO FIX MINIMUMS (DME REQUIRED)				
S-21	1200-1 450 (500-1)		1200-1 450 (500-1)	450 (500-1)
CIRCLING	1300-1 549 (600-1)		1300-1 549 (600-1)	1320-2 569 (600-2)

DAVENPORT, IOWA  
Amdt 8D 08 OCT 20

41°37'N-90°35'W

DAVENPORT MUNI (DVN)  
**VOR RWY 21**

DAVENPORT MUNI (DVN)  
VOR RWY 21