

DAVENPORT, IOWA

AL-949 (FAA)

20282

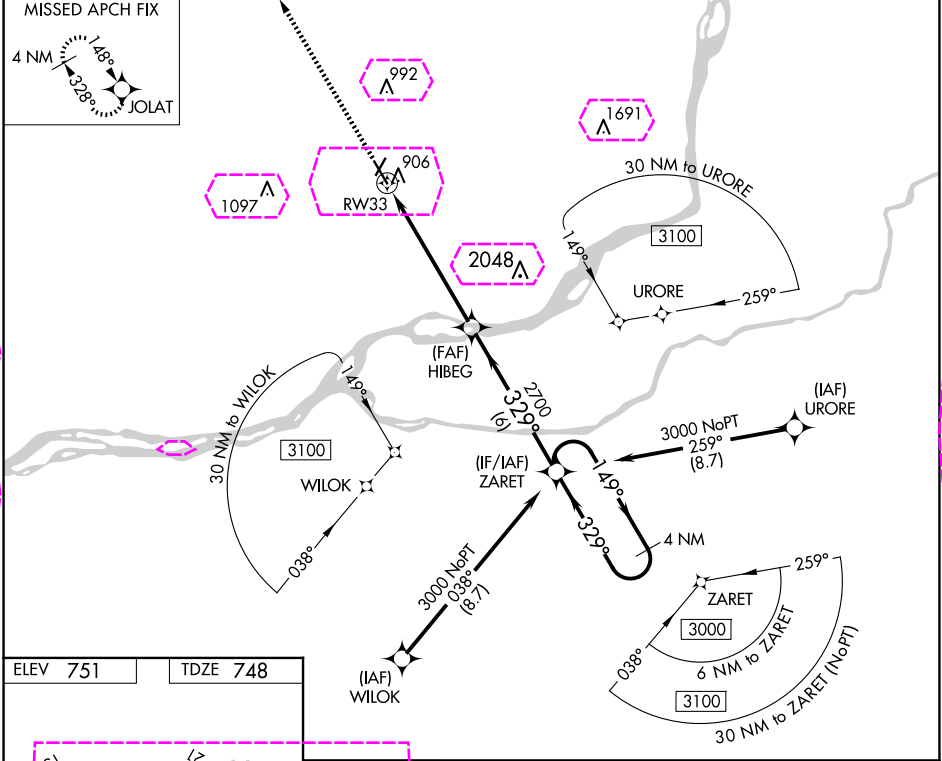
WAAS CH 56324 W33A	APP CRS 329°	Rwy Idg 5511 TDZE 748 Apt Elev 751
--	------------------------	---

RNAV (GPS) RWY 33

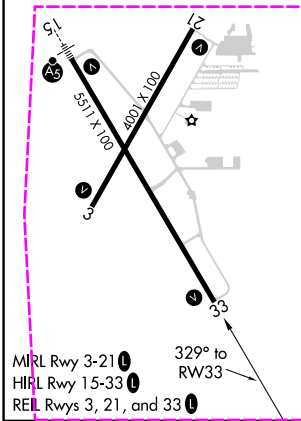
DAVENPORT MUNI (DVN)

RNP APCH.	MISSED APPROACH: Climb to 3000 direct JOLAT and hold.
Rwy 33 helicopter visibility reduction below 3/4 SM NA.	

ASOS 120.175	QUAD CITY APP CON * 125.95 257.8	CLNC DEL 118.35	UNICOM 123.0 (CTAF) 0
------------------------	--	---------------------------	---------------------------------



ELEV 751	TDZE 748
-----------------	-----------------



3000	JOLAT	4 NM Holding Pattern			
*LNAV only.					
<p>The diagram shows a flight path starting from RW33, passing through HIBEG and ZARET, and ending at 3000. The path includes a 1.2 NM segment, a 4.8 NM segment, and a 6 NM segment. Altitudes are 2700 and 3000. Angles are 329° and 149°. A 3.00° TCH 48 is indicated.</p>					
CATEGORY	A	B	C	D	
LP MDA	1160-1	412 (500-1)	1160-1½	412 (500-1½)	
LNAV MDA	1160-1	412 (500-1)	1160-1½	412 (500-1½)	
CIRCLING	1300-1	549 (600-1)	1300-1½ 549 (600-1½)	1320-2 569 (600-2)	

DAVENPORT, IOWA
Amdt 1E 08OCT20

41°37'N-90°35'W

DAVENPORT MUNI (DVN) RNAV (GPS) RWY 33

NC-3, 10 JUL 2025 to 07 AUG 2025

NC-3, 10 JUL 2025 to 07 AUG 2025

DAVENPORT, IOWA

AL-949 (FAA)

25219

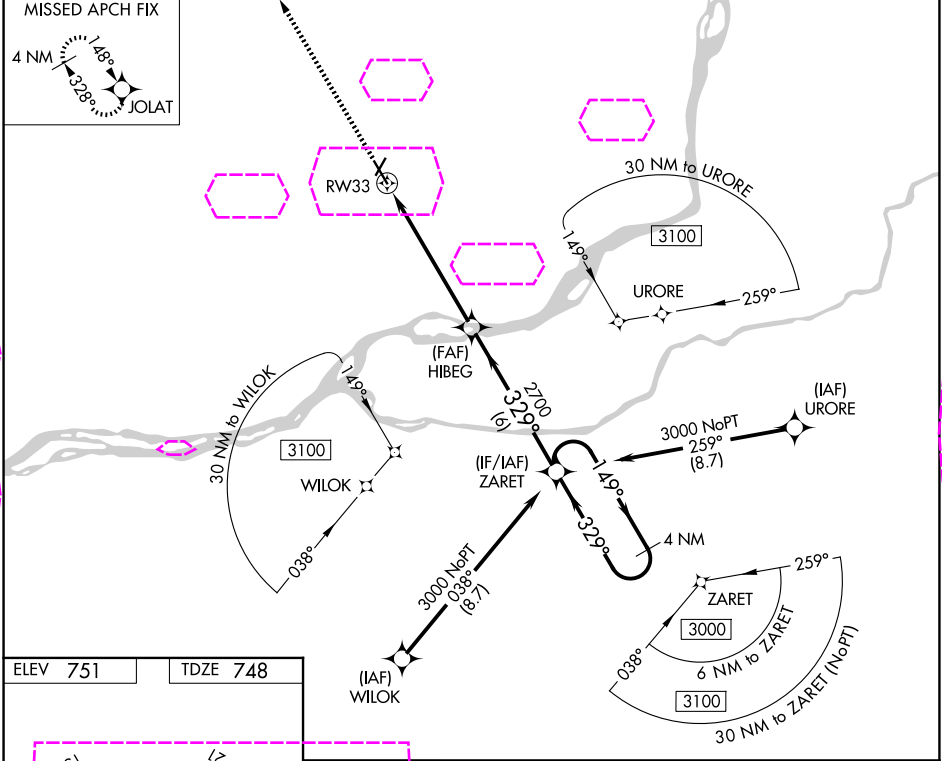
WAAS CH 56324 W33A	APP CRS 329°	Rwy Ldg 5511 TDZE 748 Apt Elev 751
--	------------------------	---

RNAV (GPS) RWY 33

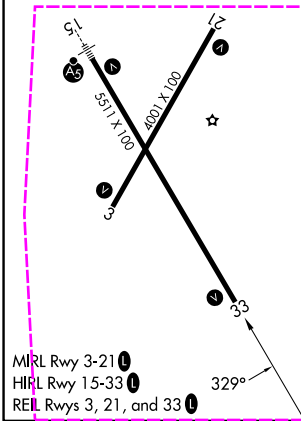
DAVENPORT MUNI (DVN)

RNP APCH.	MISSED APPROACH: Climb to 3000 direct JOLAT and hold.
Rwy 33 helicopter visibility reduction below 3/4 SM NA.	

ASOS 120.175	QUAD CITY APP CON * 125.95 257.8	CLNC DEL 118.35	UNICOM 123.0 (CTAF) 0
------------------------	--	---------------------------	---------------------------------



ELEV 751	TDZE 748
-----------------	-----------------



3000		JOLAT		4 NM Holding Pattern			
*LNAV only.							
CATEGORY	A	B	C	D			
LP MDA	1160-1	412 (500-1)	1160-1½	412 (500-1½)			
LNAV MDA	1160-1	412 (500-1)	1160-1½	412 (500-1½)			
CIRCLING	1300-1	549 (600-1)	1300-1½ 549 (600-1½)	1320-2 569 (600-2)			

DAVENPORT, IOWA
Amdt 1E 08OCT20

41°37'N-90°35'W

DAVENPORT MUNI (DVN) RNAV (GPS) RWY 33

NC-3, 07 AUG 2025 to 04 SEP 2025

NC-3, 07 AUG 2025 to 04 SEP 2025