

WAAS CH 50320 W21A	APP CRS 209°	Rwy Idg 4001 TDZE 750 Apt Elev 751
--	------------------------	---

RNAV (GPS) RWY 21
DAVENPORT MUNI (DVN)

RNP APCH.



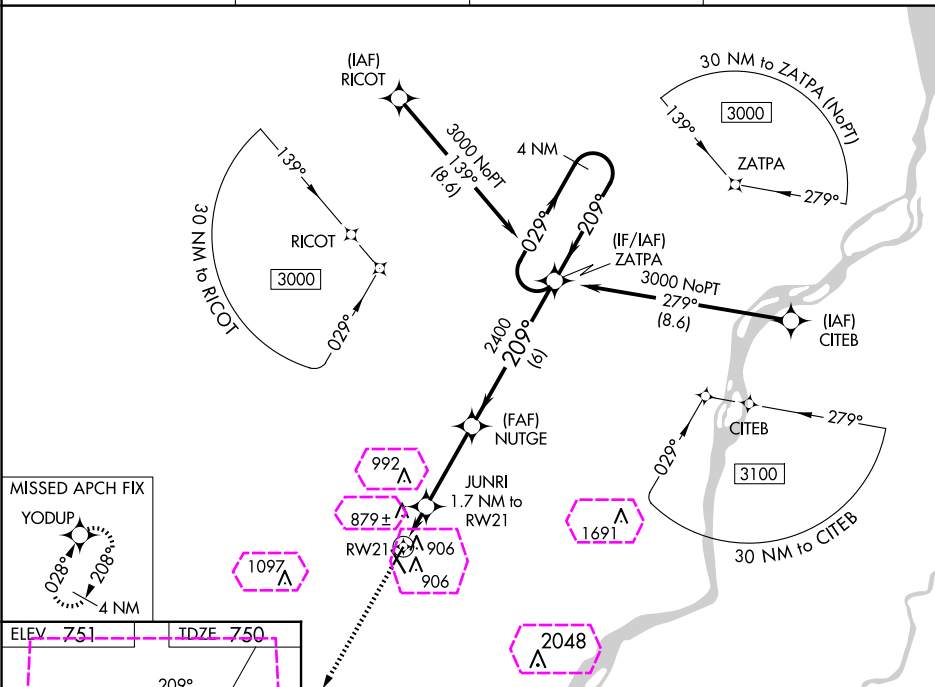
For uncompensated Baro-VNAV systems, LNAV/VNAV NA below -16°C (4°F) or above 54°C (130°F).
Rwy 21 helicopter visibility reduction below 1 SM NA.

MISSED APPROACH: Climb to 3000 direct YODUP and hold.

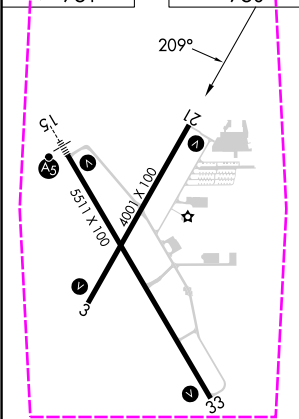
ASOS
120.175

QUAD CITY APP CON★
125.95 257.8

CLNC DEL
118.35

UNICOM
123.0 (CTAF) **L**

ELEV	751	IDZE	750
------	-----	------	-----



MIRL Rwy 3-21 **L**
HIRL Rwy 15-33 **L**
REIL Rwy 3, 21, and 33 **L**

3000 ↑ YODUP

VGSi and RNAV glidepath not coincident (VGSi Angle 3.00/TCH 45).

ZATPA

4 NM Holding Pattern

*RNAV only.

JUNRI 1.7 NM to RW21

RW21

NUTGE 2400

209°

029°

3000

GP 3.00° TCH 52

1340*

2400

1.7 3.3 NM 6 NM

CATEGORY	A	B	C	D
LPV DA		1046-1	296 (300-1)	
RNAV/DA		1184-1½	434 (500-1½)	
RNAV MDA	1180-1	430 (500-1)	1180-1¼	430 (500-1¼)
CIRCLING	1220-1	469 (500-1)	1300-1½ 549 (600-1½)	1320-2 569 (600-2)

DAVENPORT, IOWA
Amdt 1G 01DEC22

41°37'N-90°35'W

DAVENPORT MUNI (DVN)
RNAV (GPS) RWY 21

DAVENPORT, IOWA

AL-949 (FAA)

25219

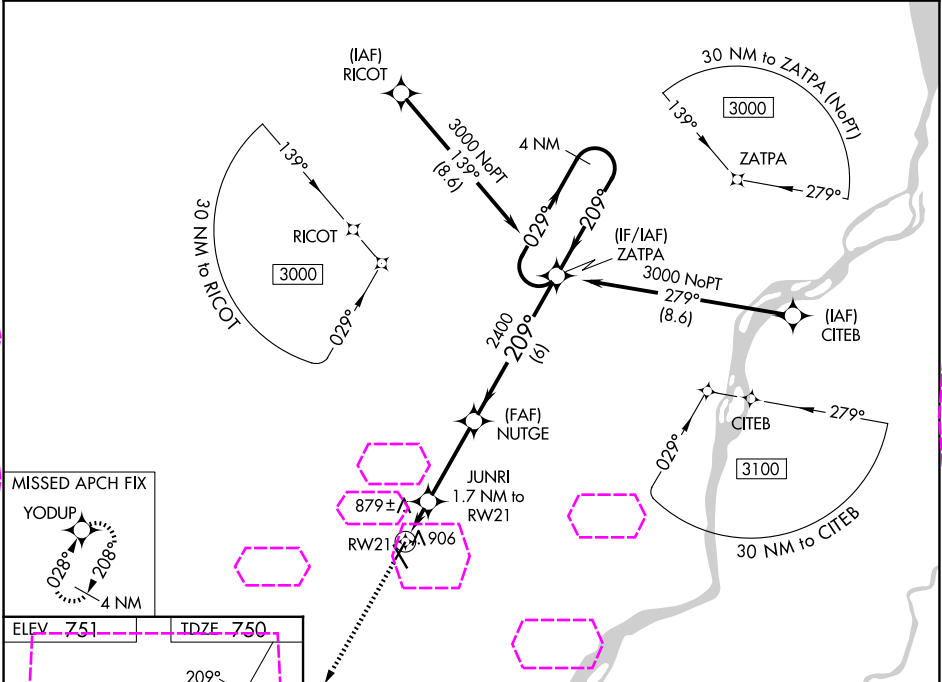
WAAS CH 50320 W21A	APP CRS 209°	Rwy Ldg TDZE 4001 750 Apt Elev 751
--	------------------------	--

RNAV (GPS) RWY 21

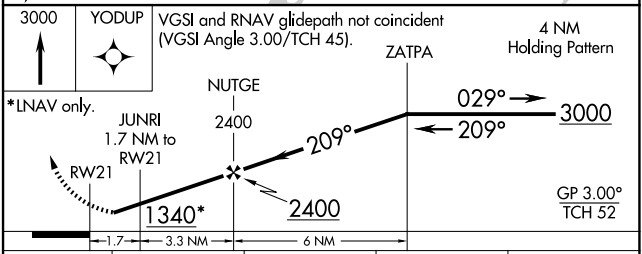
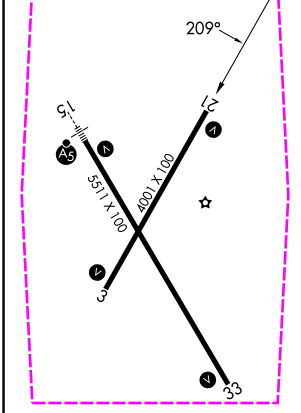
DAVENPORT MUNI (DVN)

RNP APCH.	<p>For uncompensated Baro-VNAV systems, LNAV/VNAV NA below -16°C (4°F) or above 54°C (130°F). Rwy 21 helicopter visibility reduction below 1 SM NA.</p>	MISSED APPROACH: Climb to 3000 direct YODUP and hold.
-----------	---	--

ASOS 120.175	QUAD CITY APP CON * 125.95 257.8	CLNC DEL 118.35	UNICOM 123.0 (CTAF) 0
------------------------	--	---------------------------	---------------------------------



ELEV 751	TDZE 750
-----------------	-----------------



CATEGORY	A	B	C	D
LPV DA	1046-1 296 (300-1)			
LNAV/VNAV DA	1184-1½ 434 (500-1½)			
LNAV MDA	1180-1	430 (500-1)	1180-1¼	430 (500-1¼)
CIRCLING	1220-1	469 (500-1)	1300-1½ 549 (600-1½)	1320-2 569 (600-2)

MIRL Rwy 3-21 0
HIRL Rwy 15-33 0
REIL Rwy 3, 21, and 33 0

DAVENPORT, IOWA
Amdt 1G 01DEC22

41°37'N-90°35'W

DAVENPORT MUNI (DVN) RNAV (GPS) RWY 21

NC-3, 07 AUG 2025 to 04 SEP 2025

NC-3, 07 AUG 2025 to 04 SEP 2025