

DAVENPORT, IOWA

AL-949 (FAA)

20282

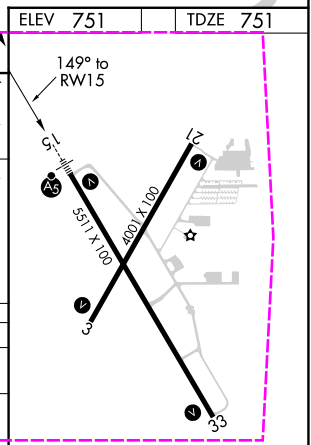
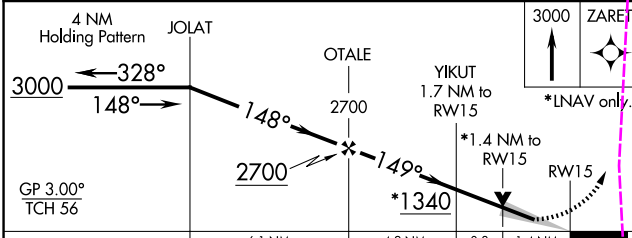
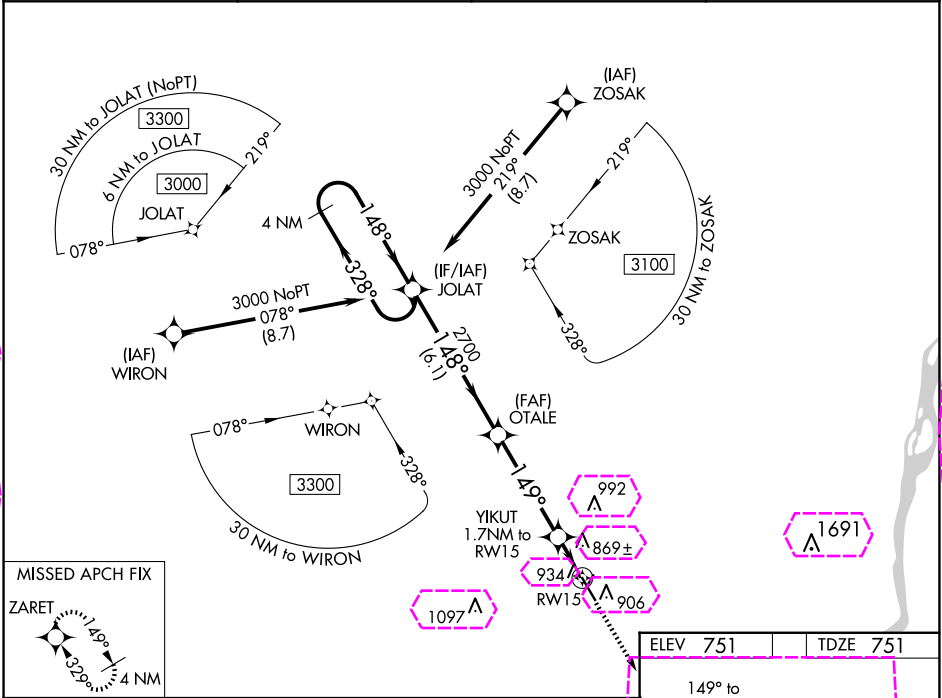
WAAS CH 81821 W15A	APP CRS 149°	Rwy Idg 5511 TDZE 751 Apt Elev 751
--	------------------------	---

RNAV (GPS) RWY 15

DAVENPORT MUNI (DVN)

RNP APCH. ⚠ For inoperative ALS, increase LNAV/VNAV visibility to 1½ SM LNAV Cat C/D visibility to 1½ SM.	MALSR ⚠	MISSED APPROACH: Climb to 3000 direct ZARET and hold.
--	------------	---

ASOS 120.175	QUAD CITY APP CON ★ 125.95 257.8	CLNC DEL 118.35	UNICOM 123.0 (CTAF) 0
------------------------	--	---------------------------	---------------------------------



CATEGORY	A	B	C	D
LPV DA	951-½ 200 (200-½)			
LNAV/VNAV DA	1171-7/8 420 (500-7/8)			
LNAV MDA	1240-½ 489 (500-½)	1240-1 489 (500-1)		
CIRCLING	1300-1 549 (600-1)	1300-1½ 549 (600-1½)	1320-2 569 (600-2)	

MIRL Rwy 3-21 0
HIRL Rwy 15-33 0
REIL Rwy 3, 21, and 33 0

DAVENPORT, IOWA
Amdt 2D 08OCT20

41°37'N-90°35'W

DAVENPORT MUNI (DVN) RNAV (GPS) RWY 15

NC-3, 10 JUL 2025 to 07 AUG 2025

NC-3, 10 JUL 2025 to 07 AUG 2025

DAVENPORT, IOWA

AL-949 (FAA)

25219

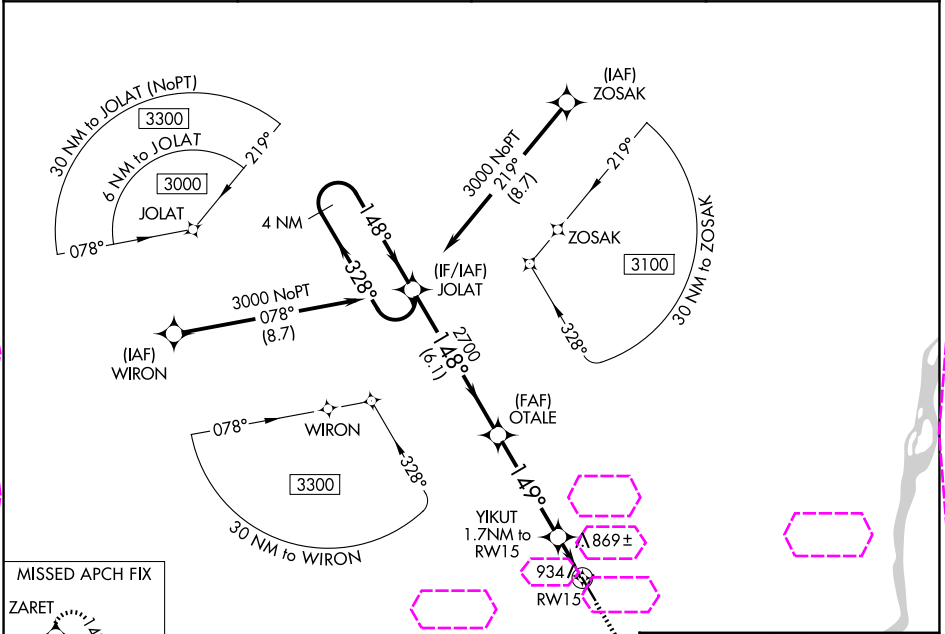
WAAS CH 81821 W15A	APP CRS 149°	Rwy Ldg 5511 TDZE 751 Apt Elev 751
--	------------------------	---

RNAV (GPS) RWY 15

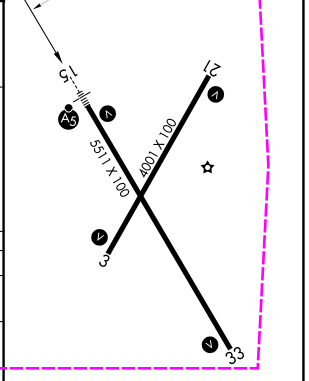
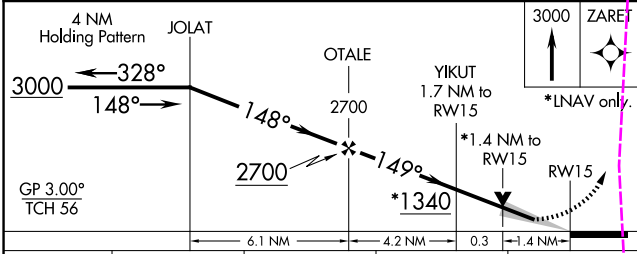
DAVENPORT MUNI (DVN)

RNP APCH. ⚠ For inoperative ALS, increase LNAV/VNAV visibility to 1½ SM LNAV Cat C/D visibility to 1½ SM.	MALSR ⚠	MISSED APPROACH: Climb to 3000 direct ZARET and hold.
--	------------	---

ASOS 120.175	QUAD CITY APP CON ★ 125.95 257.8	CLNC DEL 118.35	UNICOM 123.0 (CTAF) 0
------------------------	--	---------------------------	---------------------------------



ELEV 751	TDZE 751
----------	----------



CATEGORY	A	B	C	D
LPV DA	951-½ 200 (200-½)			
LNAV/VNAV DA	1171-7/8 420 (500-7/8)			
LNAV MDA	1240-½ 489 (500-½)	1240-1 489 (500-1)		
CIRCLING	1300-1 549 (600-1)	1300-1½ 549 (600-1½)	1320-2 569 (600-2)	

MIRL Rwy 3-21 0
HIRL Rwy 15-33 0
REIL Rws 3, 21, and 33 0

DAVENPORT, IOWA
Amdt 2D 08OCT20

41°37'N-90°35'W

DAVENPORT MUNI (DVN) RNAV (GPS) RWY 15

NC-3, 07 AUG 2025 to 04 SEP 2025

NC-3, 07 AUG 2025 to 04 SEP 2025