

DAVENPORT, IOWA

AL-949 (FAA)

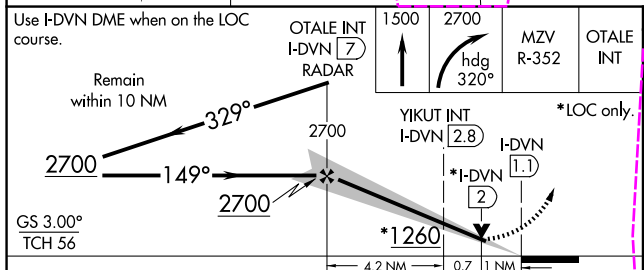
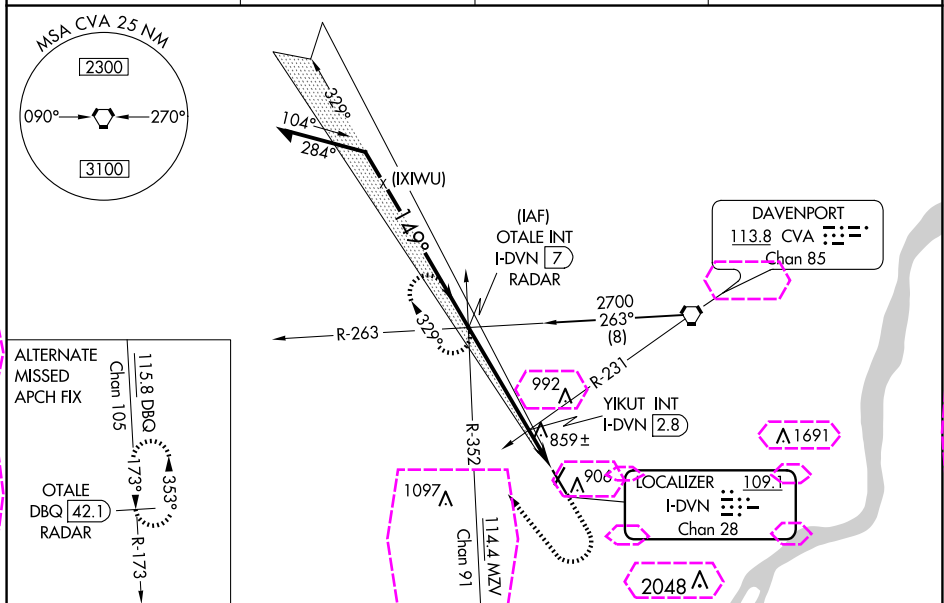
20282

LOC/DME I-DVN 109.1 Chan 28	APP CRS 149°	Rwy Idg 5511 TDZE 751 Apt Elev 751
-------------------------------------------------	------------------------	---------------------------------------------------------------

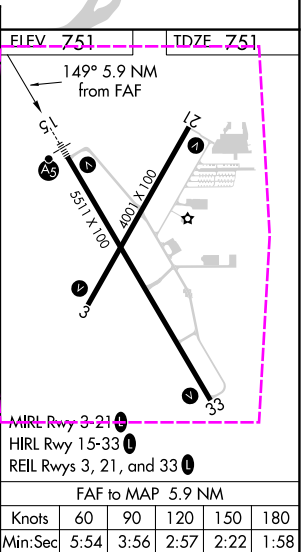
ILS or LOC RWY 15

DAVENPORT MUNI (DVN)

<div><div><div></div><div></div></div><div><div></div><div></div></div></div> <div>For inoperative ALS, increase S-LOC 15 Cat C/D visibility to 1½ SM and YIKUT fix minimums S-LOC 15 Cat C/D to 1 SM.</div>		<div>MALSR</div> <div><div><div></div><div></div><div></div><div></div><div></div></div><div><div></div><div></div></div></div>	MISSED APPROACH: Climb to 1500 then climbing right turn to 2700 on heading 320° and on MZV VOR/DME R-352 to OTOLE INT/I-DVN 7 DME/RADAR and hold.	
ASOS 120.175	QUAD CITY APP CON ★ 125.95 257.8	CLNC DEL 118.35	UNICOM 123.0 (CTAF) 0	



CATEGORY	A	B	C	D
S-ILS 15	951-½ 200 (200-½)			
S-LOC 15	1260-½ 509 (600-1)		1260-1 509 (600-1)	
CIRCLING	1300-1 549 (600-1)		1300-1½ 549 (600-1½)	1320-2 569 (600-2)
YIKUT FIX MINIMUMS				
S-LOC 15	1100-½ 349 (400-½)		1100-⅝ 349 (400-⅝)	
CIRCLING	1300-1 549 (600-1)		1300-1½ 549 (600-1½)	1320-2 569 (600-2)



DAVENPORT, IOWA
Amdt 1D 08OCT20

41°37'N-90°35'W

ILS or LOC RWY 15

NC-3, 10 JUL 2025 to 07 AUG 2025

NC-3, 10 JUL 2025 to 07 AUG 2025

FAF to MAP 5.9 NM				
Knots	60	90	120	150 180
Min:Sec	5:54	3:56	2:57	2:22 1:58

DAVENPORT MUNI (DVN)
ILS or LOC RWY 15

NC-3, 07 AUG 2025 to 04 SEP 2025