

LONG ISLAND MAC ARTHUR (ISP)  
RNAV (GPS) RWY 15R

NEW YORK, NEW YORK

AL-948 (FAA)

25219

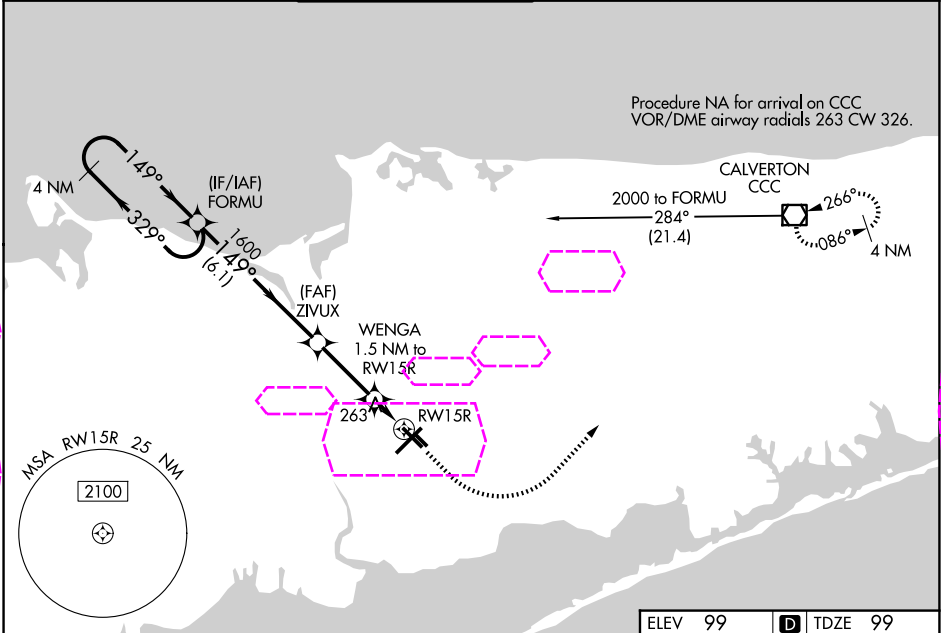
WAAS CH <b>53620</b> <b>W15A</b>	APP CRS <b>149°</b>	Rwy Ldg TDZE <b>99</b> Apt Elev <b>99</b>
--	------------------------	---

**RNAV (GPS) RWY 15R**  
LONG ISLAND MAC ARTHUR (ISP)

▼ Baro-VNAV NA when using Shirley altimeter setting. For uncompensated Baro-VNAV systems, procedure NA below -14°C (7°F) or above 46°C (115°F). DME/DME RNP-0.3 NA. When local altimeter setting not received, use Shirley altimeter setting and increase LPV DA to 442 feet, LNAV/VNAV DA to 575 feet and LNAV/VNAV visibility all Cats ½ mile; all MDAs 40 feet, LNAV Cats C/D visibility ⅓ mile, and Circling Cats C/D visibility ¼ mile. Helicopter visibility reduction below ¾ SM NA.

MISSED APPROACH: Climb to 600 then climbing left turn to 2000 direct CCC VOR/DME and hold.

ATIS <b>120.725</b>	NEW YORK APP CON <b>120.05 343.75</b>	LONG ISLAND TOWER* <b>119.3 (CTAF) 335.5</b>	GND CON <b>135.3</b>	CLNC DEL <b>121.85</b>	UNICOM <b>122.95</b>
------------------------	--	---	-------------------------	---------------------------	-------------------------



4 NM Holding Pattern FORMU		VGSI and RNAV glidepath not coincident (VGSI Angle 3.10/TCH 46).		ELEV 99 TDZE 99	
2000 ← 329° 149° →		ZIVUX 1600		*LNAV only.	
GP 3.10° TCH 46		WENGA 1.5 NM to RW15R		600 2000 CCC	
6.1 NM		2.9 NM		1.5 NM	
CATEGORY	A	B	C	D	
LPV DA	414-1 315 (400-1)				
LNAV/VNAV DA	547-1⅜ 448 (500-1⅜)				
LNAV MDA	520-1 421 (500-1)		520-1¼ 421 (500-1¼)		
CIRCLING	600-1 501 (600-1)	660-1 561 (600-1)	660-1½ 561 (600-1½)	960-2¾ 861 (900-2¾)	MIRL Rwy 15R-33L HIRL Rwy 6-24