

(NELIE.NELIE3) 22307

AL-948 (FAA)

NELIE THREE ARRIVAL (RNAV)

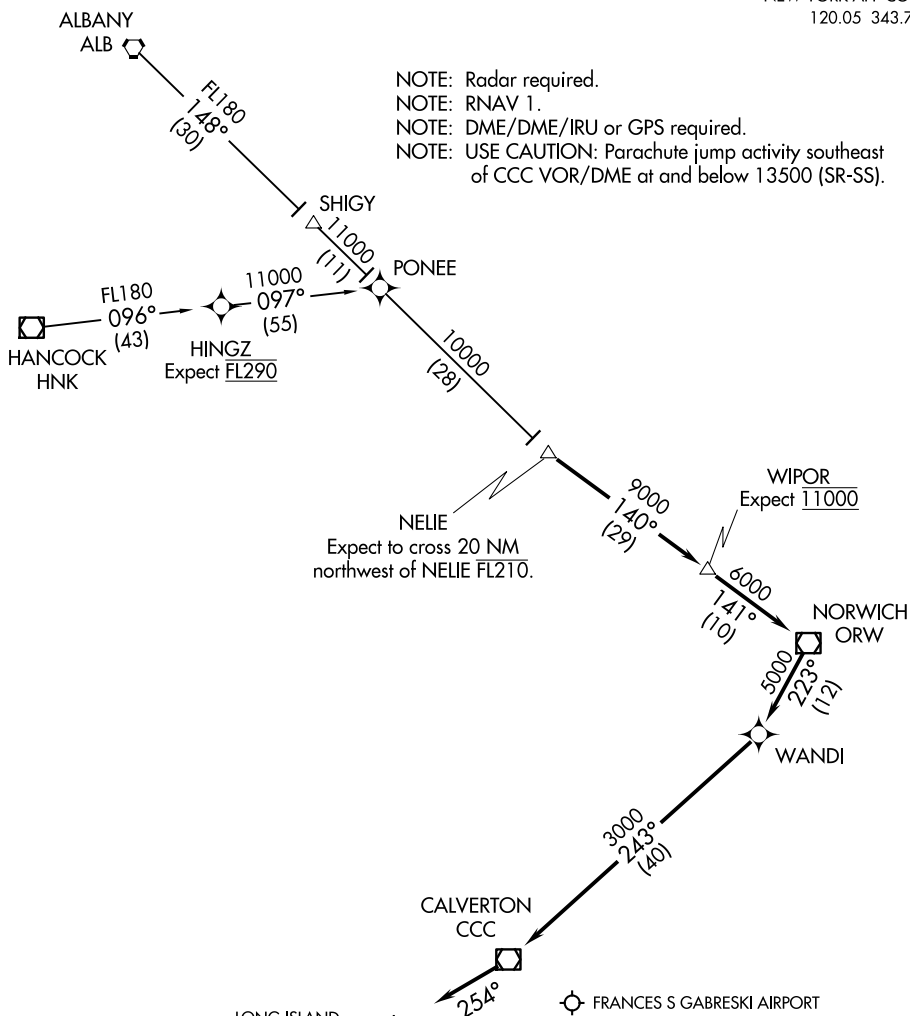
NEW YORK, NEW YORK

ATIS 120.725

NEW YORK APP CON

120.05 343.75

NOTE: Radar required.
NOTE: RNAV 1.
NOTE: DME/DME/IRU or GPS required.
NOTE: USE CAUTION: Parachute jump activity southeast of CCC VOR/DME at and below 13500 (SR-SS).



NOTE: Chart not to scale.

ARRIVAL ROUTE DESCRIPTION

ALBANY TRANSITION (ALB.NELIE3):

HANCOCK TRANSITION (HNK.NELIE3):

HINGZ TRANSITION (HINGZ.NELIE3):

....From NELIE on track 140° to WIPOR, then on track 141° to ORW VOR/DME, then on track 223° track to WANDI, then on track 243° to CCC VOR/DME, then on heading 254° or as assigned by ATC. Expect vectors to final approach course.

NELIE THREE ARRIVAL (RNAV)

NEW YORK, NEW YORK

(NELIE.NELIE3) 13NOV14

NE-2, 10 JUL 2025 to 07 AUG 2025

NE-2, 10 JUL 2025 to 07 AUG 2025

(NELIE.NELIE4) 25219

AL-948 (FAA)

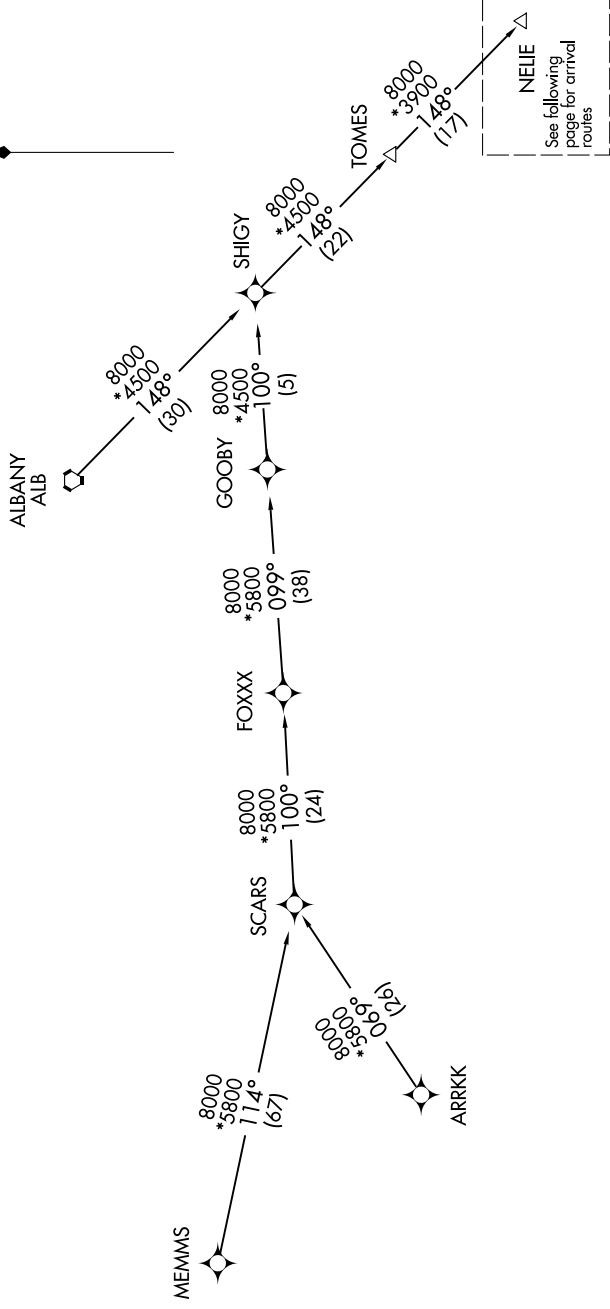
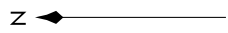
NELIE FOUR ARRIVAL (RNAV) Transition Routes

NEW YORK, NEW YORK

RNAV 1 - DME/DME/IRU OR GPS.
RADAR required.

NE-2, 07 AUG 2025 to 04 SEP 2025

NEW YORK APP CON
120.05 343.75
ISP ATIS
120.725



NOTE: Chart not to scale.

(CONTINUED ON FOLLOWING PAGE)

NE-2, 07 AUG 2025 to 04 SEP 2025

ALBANY TRANSITION (ALB.NELIE4):
ARRKK TRANSITION (ARRKK.NELIE4):
MEMMS TRANSITION (MEMMS.NELIE4):

NELIE FOUR ARRIVAL (RNAV) Transition Routes

NEW YORK, NEW YORK

(NELIE.NELIE4) 07AUG25