

NEW YORK, NEW YORK

AL-948 (FAA)

23278

LOC/DME I-ISP 108.3 Chan 20	APP CRS 059°	Rwy Idg 7006 TDZE 94 Apt Elev 99
---	------------------------	---

ILS or LOC RWY 6

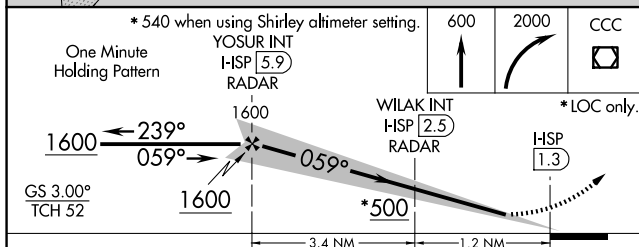
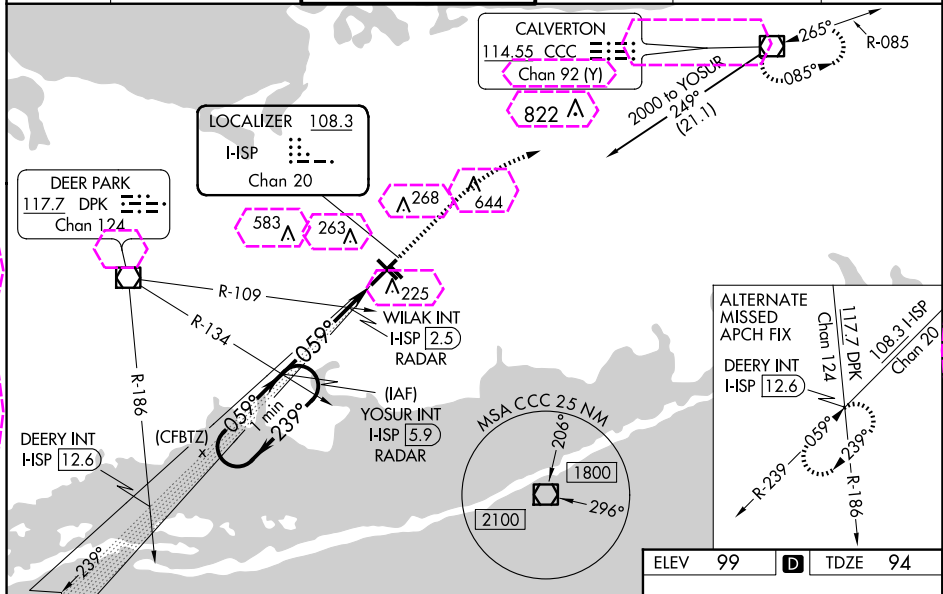
LONG ISLAND MAC ARTHUR (ISP)

⚠ When local altimeter setting not received, use Shirley altimeter setting and increase all DA 28 feet and all MDA 40 feet, increase S-LOC 6 Cat C and D visibility to RVR 4500 and Circling Cat C and D visibility 1/4 mile. Increase WILAK fix minimums S-LOC 6 Cat C and D visibility to RVR 3500. For inoperative MALSR, increase S-LOC 6 Cat C and D visibility to RVR 6000. Increase WILAK fix minimums S-LOC 6 Cats C and D visibility to RVR 5500.
** RVR 1800 authorized with use of FD or AP or HUD to DA, NA when using Shirley altimeter setting.

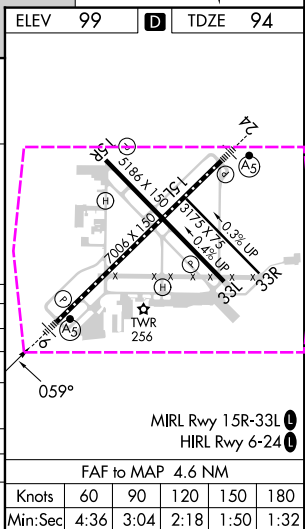
MALSR

MISSED APPROACH:
Climb to 600 then climbing right turn to 2000 direct CCC VOR/DME and hold.

ATIS 120.725	NEW YORK APP CON 120.05 343.75	LONG ISLAND TOWER* 119.3 (CTAF) 335.5	GND CON 135.3	CLNC DEL 121.85	UNICOM 122.95
------------------------	--	---	-------------------------	---------------------------	-------------------------



CATEGORY	A	B	C	D
S-ILS 6		** 294/24	200 (200-1/2)	
S-LOC 6	500/24	406 (500-1/2)	500/40	406 (500-3/4)
CIRCLING	600-1 501 (600-1)	660-1 561 (600-1)	660-1 1/2 561 (600-1 1/2)	960-2 3/4 861 (900-2 3/4)
WILAK FIX MINIMUMS (DUAL VOR RECEIVERS OR DME REQUIRED)				
S-LOC 6	440/24	346 (400-1/2)	440/30	346 (400-3/8)
CIRCLING	600-1 501 (600-1)	660-1 561 (600-1)	660-1 1/2 561 (600-1 1/2)	960-2 3/4 861 (900-2 3/4)



NEW YORK, NEW YORK
Amdt 25A 01FEB18

40°48'N-73°06'W

LONG ISLAND MAC ARTHUR (ISP)
ILS or LOC RWY 6

NEW YORK, NEW YORK

AL-948 (FAA)

25219

LOC/DME I-ISP 108.3 Chan 20	APP CRS 059°	Rwy Ldg 7006 TDZE 94 Apt Elev 99
---	------------------------	---

ILS or LOC RWY 6

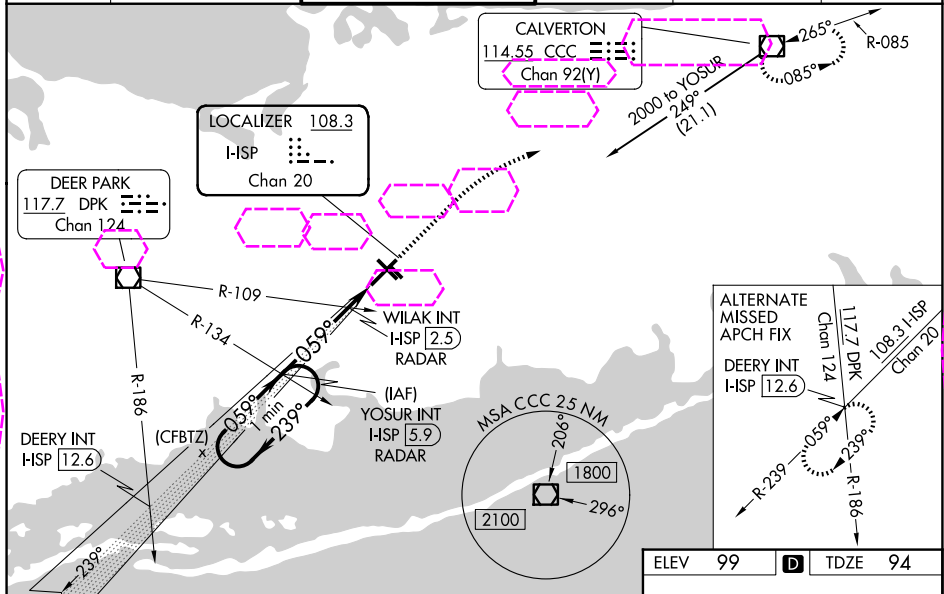
LONG ISLAND MAC ARTHUR (ISP)

⚠ When local altimeter setting not received, use Shirley altimeter setting and increase all DA 28 feet and all MDA 40 feet, increase S-LOC 6 Cat C and D visibility to RVR 4500 and Circling Cat C and D visibility $\frac{1}{4}$ mile. Increase WILAK fix minimums S-LOC 6 Cat C and D visibility to RVR 3500. For inoperative MALSR, increase S-LOC 6 Cat C and D visibility to RVR 6000. Increase WILAK fix minimums S-LOC 6 Cats C and D visibility to RVR 5500.
** RVR 1800 authorized with use of FD or AP or HUD to DA, NA when using Shirley altimeter setting.

MALSR

MISSED APPROACH:
Climb to 600 then climbing right turn to 2000 direct CCC VOR/DME and hold.

ATIS 120.725	NEW YORK APP CON 120.05 343.75	LONG ISLAND TOWER* 119.3 (CTAF) 335.5	GND CON 135.3	CLNC DEL 121.85	UNICOM 122.95
------------------------	--	---	-------------------------	---------------------------	-------------------------



* 540 when using Shirley altimeter setting.

One Minute Holding Pattern

YOSUR INT I-HSP **5.9** RADAR

WILAK INT I-HSP **2.5** RADAR

GS 3.00° TCH 52

1600 239° 059° 1600

3.4 NM 1.2 NM

* 500

* LOC only.

HSP **1.3**

ELEV 99	D	TDZE 94
---------	----------	---------

MIRL Rwy 15R-33L

HIRL Rwy 6-24

FAF to MAP 4.6 NM

Knots	60	90	120	150	180
Min:Sec	4:36	3:04	2:18	1:50	1:32

CATEGORY	A	B	C	D
S-ILS 6		** 294/24		200 (200- $\frac{1}{2}$)
S-LOC 6	500/24	406 (500- $\frac{1}{2}$)	500/40	406 (500- $\frac{3}{4}$)
CIRCLING	600-1 501 (600-1)	660-1 561 (600-1)	660-1 $\frac{1}{2}$ 561 (600-1 $\frac{1}{2}$)	960-2 $\frac{3}{4}$ 861 (900-2 $\frac{3}{4}$)
WILAK FIX MINIMUMS (DUAL VOR RECEIVERS OR DME REQUIRED)				
S-LOC 6	440/24	346 (400- $\frac{1}{2}$)	440/30	346 (400- $\frac{5}{8}$)
CIRCLING	600-1 501 (600-1)	660-1 561 (600-1)	660-1 $\frac{1}{2}$ 561 (600-1 $\frac{1}{2}$)	960-2 $\frac{3}{4}$ 861 (900-2 $\frac{3}{4}$)

NEW YORK, NEW YORK
Amdt 25A 01FEB18

40°48'N-73°06'W

LONG ISLAND MAC ARTHUR (ISP)
ILS or LOC RWY 6