


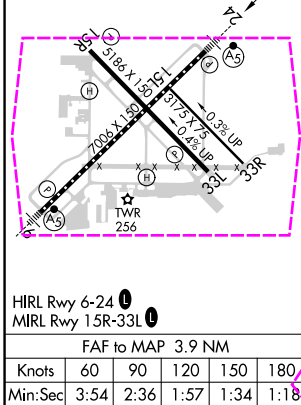
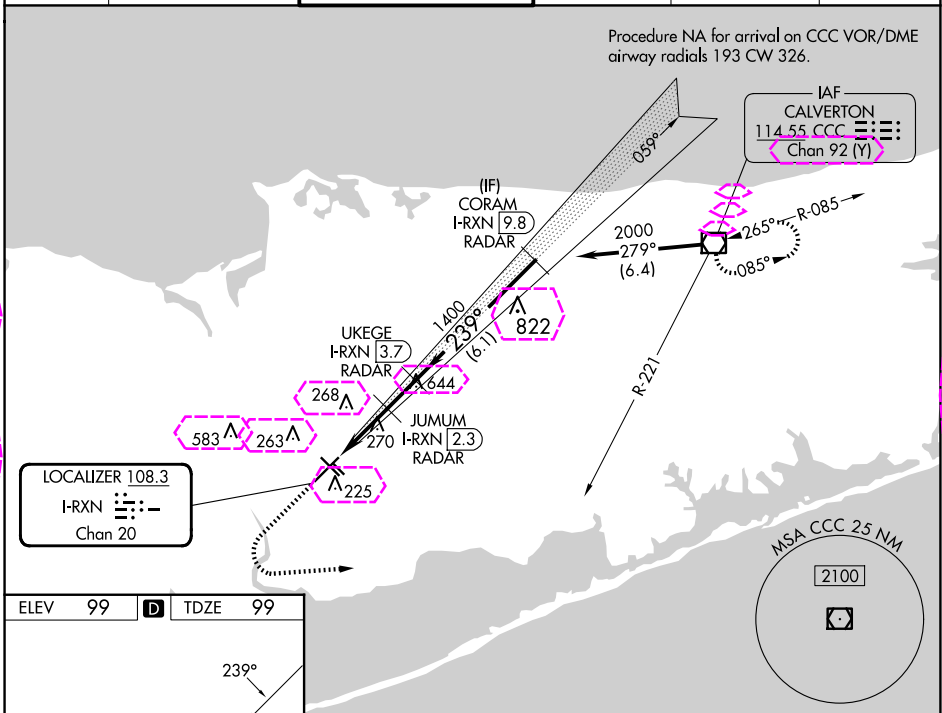


LOC/DME I-RXN	APP CRS	Rwy Idg	7006
<u>108.3</u>	<u>239°</u>	TDZE	99
Chan 20		Apt Elev	99

ILS or LOC RWY 24
LONG ISLAND MAC ARTHUR (ISP)

RNP APCH - GPS.				MISSED APPROACH: Climb to 2000, then left turn on heading 100° and CCC R-221 to CCC VOR/DME and hold.	
Aircraft not GPS equipped - RADAR required.					
 Autopilot coupled approach NA below 800.  * RVR 1800 authorized with use of FD or AP or HUD to DA (NA when using HWY altimeter setting).					
ATIS 120.725	NEW YORK APP CON 120.05 343.75	LONG ISLAND TOWER* 119.3 (CTAF) 0 335.5	GND CON 135.3	CLNC DEL 121.85	UNICOM 122.95



CATEGORY	A	B	C	D
S-ILS 24 *	299/24 200 (200-½)			
S-LOC 24	520/24 600-1 501 (600-1)	421 (500-½) 660-1 561 (600-1)	520/40 660-1½ 561 (600-½)	421 (500-¾) 960-2¾ 861 (900-2¾)

NEW YORK, NEW YORK

AL-948 (FAA)

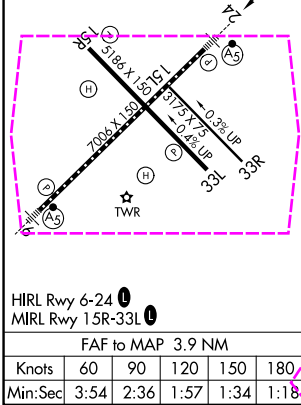
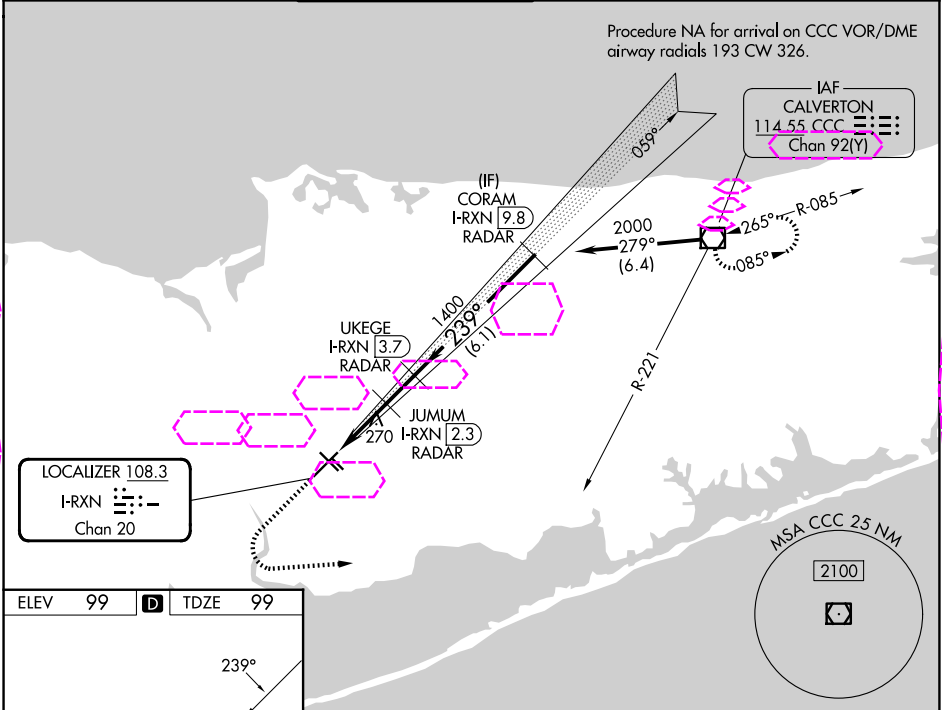
25219

LOC/DME I-RXN 108.3 Chan 20	APP CRS 239°	Rwy Ldg TDZE 99 Apt Elev 99
---	------------------------	---

ILS or LOC RWY 24
LONG ISLAND MAC ARTHUR (ISP)

RNP APCH - GPS. Aircraft not GPS equipped - RADAR required.	MALSR 	MISSED APPROACH: Climb to 2000, then left turn on heading 100° and CCC R-221 to CCC VOR/DME and hold.
Autopilot coupled approach NA below 800. * RVR 1800 authorized with use of FD or AP or HUD to DA (NA when using HWV altimeter setting).		

ATIS 120.725	NEW YORK APP CON 120.05 343.75	LONG ISLAND TOWER★ 119.3 (CTAF) 0335.5	GND CON 135.3	CLNC DEL 121.85	UNICOM 122.95
------------------------	--	--	-------------------------	---------------------------	-------------------------



2000	hdg 100°	CCC R-221	CCC	CORAM I-RXN 9.8 RADAR
UKEGE I-RXN 3.7 RADAR	JUMUM I-RXN 2.3 RADAR	I-RXN DME ANTENNA	I-RXN 0.2	1400
239°	2000	940	1400	GS 3.00° TCH 52
0.2	1 NM	1.3 NM	1.4 NM	6.1 NM
CATEGORY	A	B	C	D
S-ILS 24 *	299/24 200 (200-1/2)			
S-LOC 24	520/24	421 (500-1/2)	520/40	421 (500-3/4)
CIRCLING	600-1	660-1	660-1 1/2	960-2 3/4
	501 (600-1)	561 (600-1)	561 (600-1 1/2)	861 (900-2 3/4)

NEW YORK, NEW YORK
Amdt 5 17APR25

40°48'N-73°06'W

LONG ISLAND MAC ARTHUR (ISP)
ILS or LOC RWY 24

NE-2, 07 AUG 2025 to 04 SEP 2025

NE-2, 07 AUG 2025 to 04 SEP 2025