

NW-1, 10 JUL 2025 to 07 AUG 2025

NORTH BEND, OREGON

AL-929 (FAA)

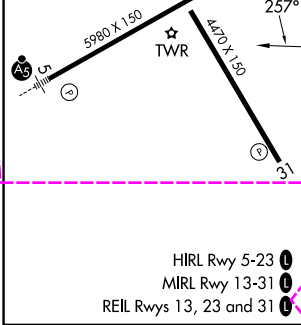
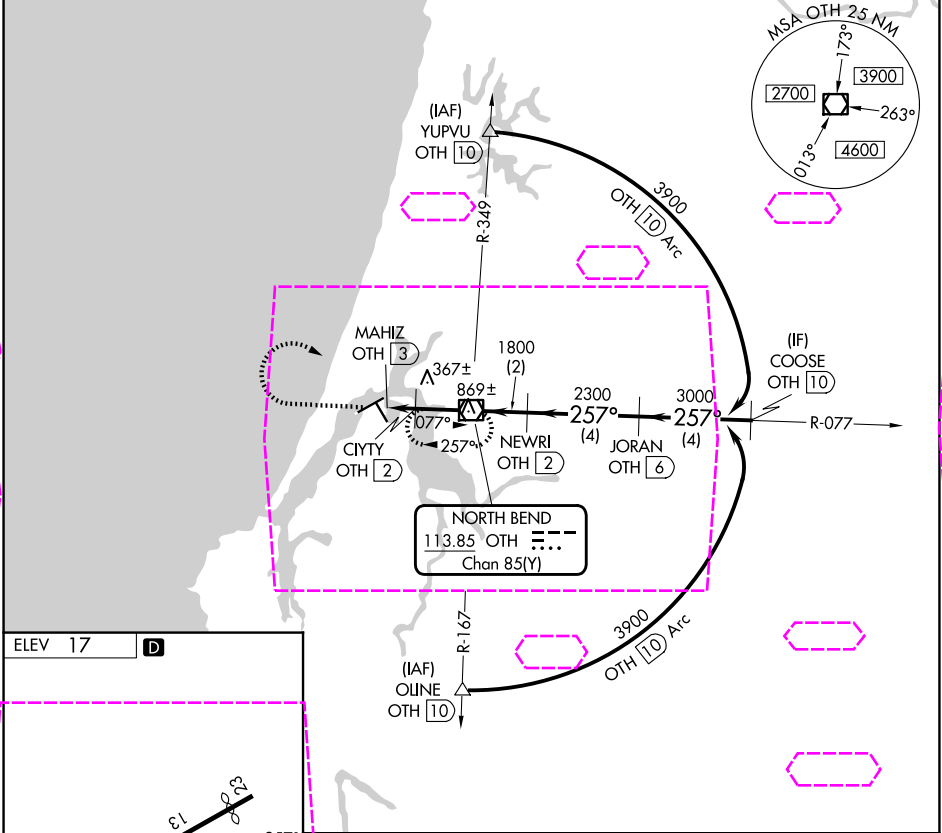
25219

VOR/DME OTH 113.85 Chan 85(Y)	APP CRS 257°	Rwy Ldg TDZE Apt Elev 17	N/A N/A 17
---	------------------------	--	---------------------------------------

VOR-B
SOUTHWEST OREGON RGNL (OTH)

DME required.	MISSED APPROACH: Climb to 2300 then climbing right turn to 3600 direct OTH VOR/DME and hold.
▼ Circling Rwy 13, 31 NA at night. ▲ Rwy 13, 31 helicopter visibility reduction below 1 SM NA.	

AWOS-3PT 135.075	SEATTLE CENTER 127.55 254.35	NORTH BEND TOWER* 118.45 (CTAF) 0	GND CON 127.1
----------------------------	--	---	-------------------------



2300	3600	OTH	MAHIZ OTH [3]	CIYTY OTH [2]	NEWRI OTH [2]	JORAN OTH [6]	COOSE OTH [10]
1060	1800	2300	3000	3900			
1 NM	2 NM	2 NM	4 NM	4 NM			
CATEGORY	A	B	C	D			
	700-1 683 (700-1)	820-1 803 (900-1)	1100-3 1083 (1100-3)	1180-3 1163 (1200-3)			

NORTH BEND, OREGON
Amdt 5A 26MAR20

43°25'N-124°15'W

SOUTHWEST OREGON RGNL (OTH)
VOR-B

NW-1, 07 AUG 2025 to 04 SEP 2025

NW-1, 07 AUG 2025 to 04 SEP 2025