

NORTH BEND, OREGON

AL-929 (FAA)

22195

WAAS CH 82416 W05A	APP CRS 046°	Rwy Idg TDZE Apt Elev 5320 16 17
--	------------------------	--

RNAV (GPS) Y RWY 5

SOUTHWEST OREGON RGNL (OTH)

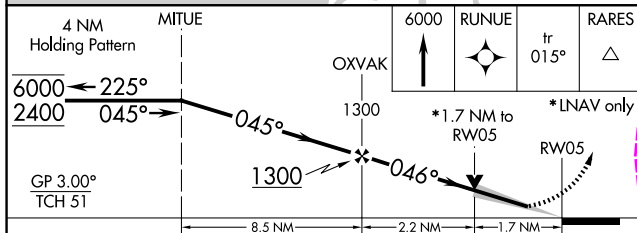
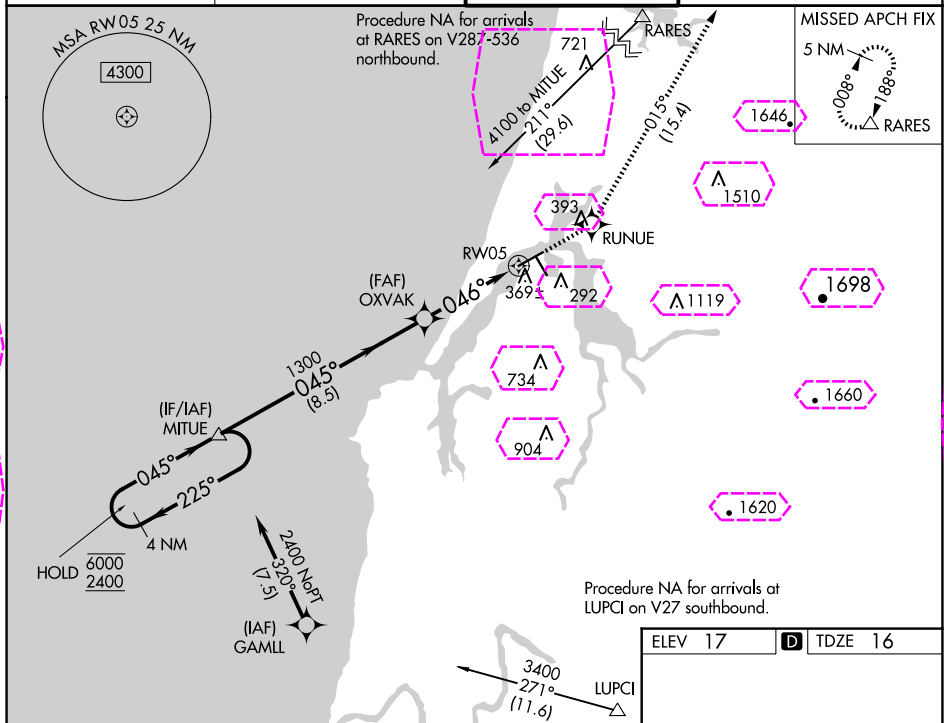
RNP APCH.

▼ Circling Rwy 13, 31 NA at night. For uncompensated Baro-VNAV systems, LNAV/VNAV NA below -2°C or above 54°C. For inop ALS, increase LPV all Cats visibility to ½ SM, LNAV/VNAV all Cats visibility to 1½ SM, and increase LNAV Cat C/D visibility to 1¾ SM.

MALSRR

MISSED APPROACH: Climb to 6000 direct RUNUE and on track 015° to RARES and hold, continue climb-in-hold to 6000.

AWOS-3PT 135.075	SEATTLE CENTER 127.55 254.35	NORTH BEND TOWER* 118.45 (CTAF) 0	GND CON 127.1
----------------------------	--	---	-------------------------



CATEGORY	A	B	C	D
LPV DA	319-1½	303 (400-½)		
LNAV/VNAV DA	550-1¾	534 (600-1¾)		
LNAV MDA	620-1½	604 (700-½)	620-1¾	604 (700-1¾)
CIRCLING	680-1 663 (700-1)	820-1 803 (900-1)	1100-3 1083 (1100-3)	1160-3 1143 (1200-3)

ELEV 17 D TDZE 16

HIRL Rwy 5-23 0
MIRL Rwy 13-31 0
REIL Rwys 13, 23 and 31 0

NORTH BEND, OREGON

Amdt 1A 26MAR20

43°25'N-124°15'W

SOUTHWEST OREGON RGNL (OTH)

RNAV (GPS) Y RWY 5

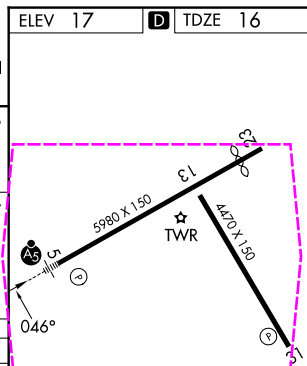
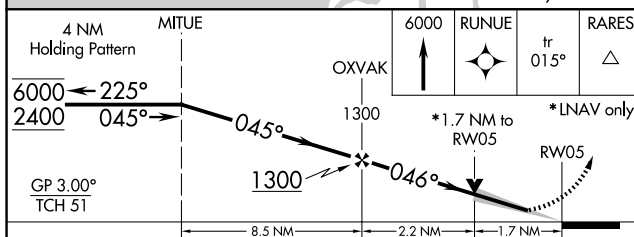
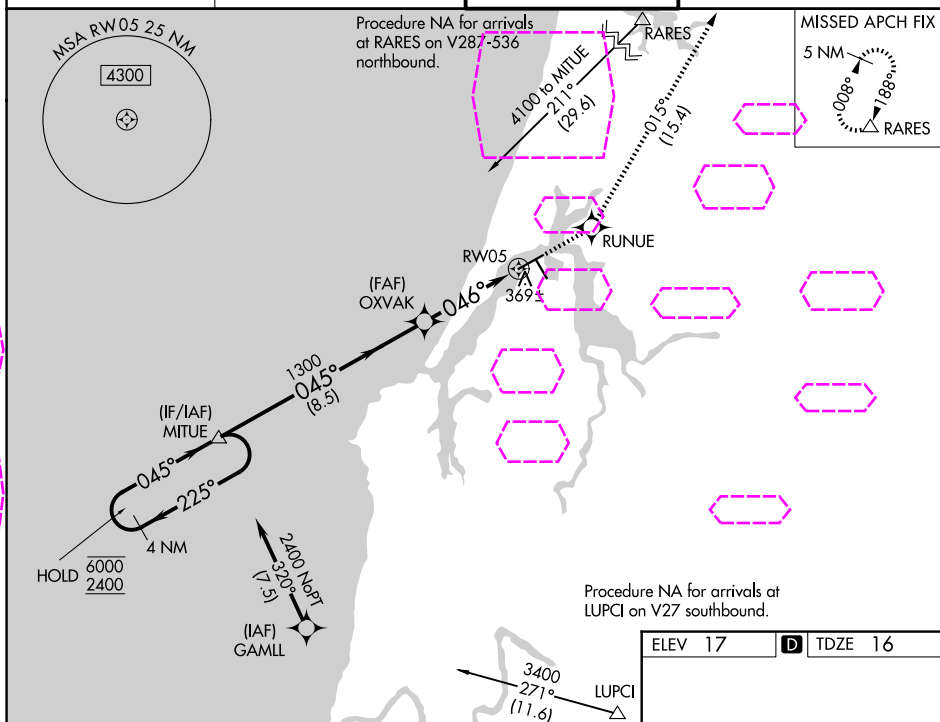
NW-1, 10 JUL 2025 to 07 AUG 2025

NW-1, 10 JUL 2025 to 07 AUG 2025

RNAV (GPS) Y RWY 5
SOUTHWEST OREGON RGNL (OTH)

MISSED APPROACH: Climb to 6000 direct RUNUE and on track 015° to RARES and hold, continue climb-in-hold to 6000.

127.1



CATEGORY	A	B	C	D
LPV DA	319-1/2		303 (400-1/2)	
RNAV/DA	550-13/8		534 (600-13/8)	
RNAV MDA	620-1/2 604 (700-1/2)		620-13/8 604 (700-13/8)	
CIRCLING	680-1 663 (700-1)	820-1 803 (900-1)	1100-3 1083 (1100-3)	1160-3 1143 (1200-3)

HIRL Rwy 5-23 **L**
MIRL Rwy 13-31 **L**
REIL Rwy 13, 23 and 31 **L**

SOUTHWEST OREGON RGNL (OTH)
RNAV (GPS) Y RWY 5

RNAV (GPS) Y RWY 5

NW-1, 07 AUG 2025 to 04 SEP 2025