

NORTH BEND, OREGON

AL-929 (FAA)

22195

APP CRS 046°	Rwy Idg 5320
	TDZE 16
	Apt Elev 17

RNAV (RNP) Z RWY 5

SOUTHWEST OREGON RGNL (OTH)

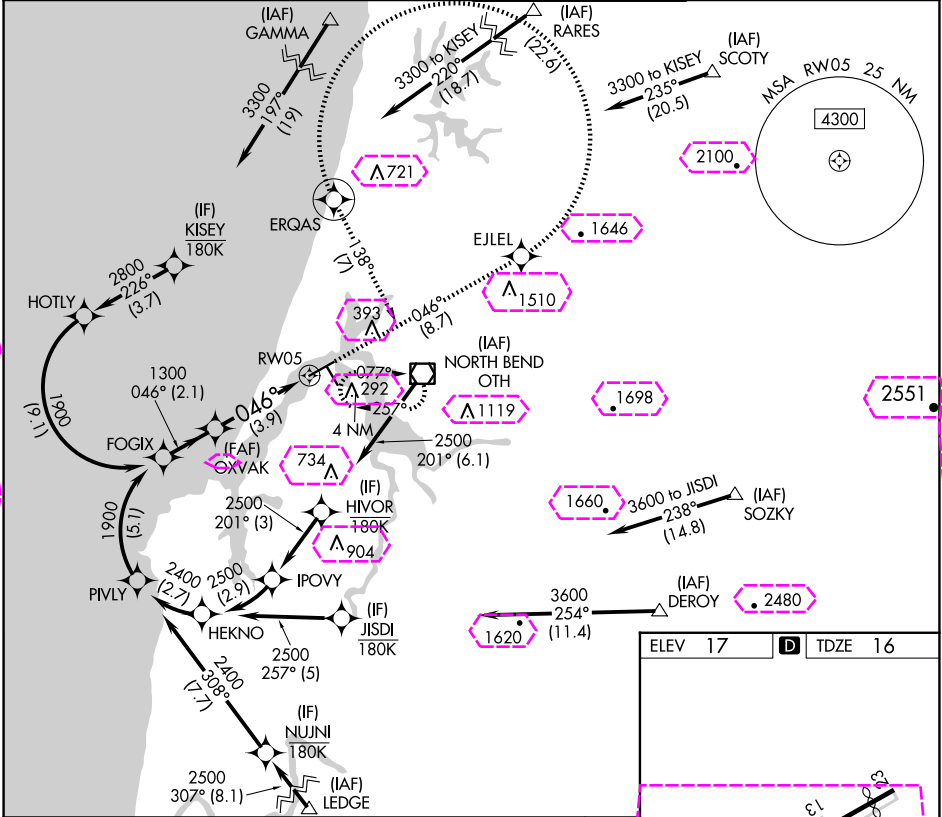
RNP AR APCH. RF required.

For inop ALS, increase *RNP 0.11 all Cats visibility to 1 SM, #RNP 0.30 all Cats visibility to 1½ SM, and RNP 0.30 all Cats visibility to 1½ SM. For uncompensated Baro-VNAV systems, procedure NA below -2°C or above 54°C.

MALSR

MISSED APPROACH: Climb to 3300 on track 046° to EJLEL, left turn to ERQAS, and on track 138° to OTH VOR/DME and hold.
*Missed approach requires minimum climb of 400 feet per NM to 1200.
#Missed approach requires minimum climb of 255 feet per NM to 2400.

AWOS-3PT 135.075	SEATTLE CENTER 127.55 254.35	NORTH BEND TOWER* 118.45 (CTAF)	GND CON 127.1
----------------------------	----------------------------------------	-------------------------------------------	-------------------------



See planview for multiple IF locations.	3300	EJLEL	ERQAS	tr 138°	OTH
FOGIX	↑ tr 046°				
1900	046°	1300			
GP 3.00°	1300				
TCH 51					
	2.1 NM	3.9 NM			
CATEGORY	A	B	C	D	
RNP 0.11 DA*		394-5/8	378 (400-5/8)		
RNP 0.30 DA#		477-1 1/8	461 (500-1 1/8)		
RNP 0.30 DA		569-1 3/8	553 (600-1 3/8)		
AUTHORIZATION REQUIRED					

ELEV 17 D TDZE 16

HIRL Rwy 5-23
MIRL Rwy 13-31
REIL Rwys 13, 23 and 31

NORTH BEND, OREGON

Amdt 1A 26MAR20

43°25'N-124°15'W

SOUTHWEST OREGON RGNL (OTH)

RNAV (RNP) Z RWY 5

NW-1, 10 JUL 2025 to 07 AUG 2025

NW-1, 10 JUL 2025 to 07 AUG 2025

NW-1, 07 AUG 2025 to 04 SEP 2025