

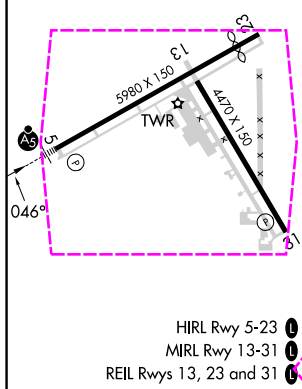
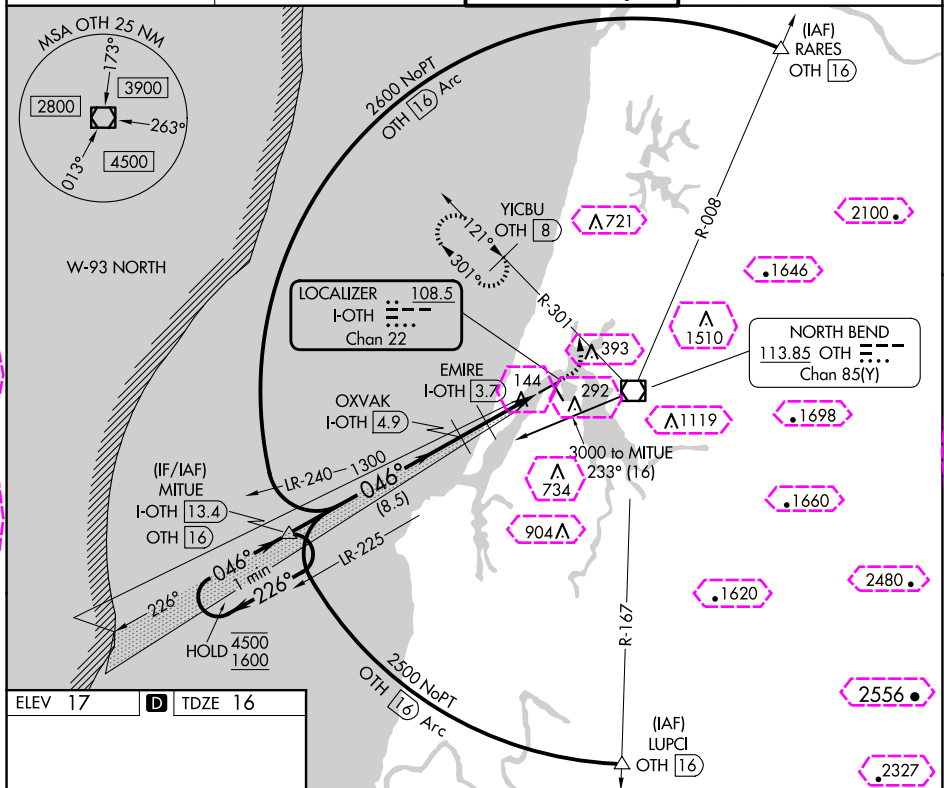


LOC/DME I-OTH	APP CRS	Rwy Idg	5320
108.5	046°	TDZE	16
Chan 22		Apt Elev	17

ILS Z or LOC Z RWY 5
SOUTHWEST OREGON RGNL (OTH)

DME required.	MALSR	MISSED APPROACH: Climb to 500 then climbing left turn to 2600 on heading 340° and OTH VOR/DME R-301 to YICBU/OTH 8 DME and hold, continue climb-in-hold to 2600.
 Circling Rwy 13, 31 NA at night.		

AWOS-3PT 135.075	SEATTLE CENTER 127.55 254.35	NORTH BEND TOWER★ 118.45 (CTAF)0	GND CON 127.1
----------------------------	--	--	-------------------------



<p>One Minute Holding Pattern</p> <p>MITUE I-OTH 13.4 OTH 16</p> <p>OXVAK I-OTH 4.9</p> <p>EMIRE I-OTH 3.7</p> <p>I-OTH 2.1</p> <p>I-OTH 1</p> <p>YICBU OTH 8</p> <p>500 ↑</p> <p>2600 hdg 340°</p> <p>OTH R-301</p>				
<p>4500 ← 226° 1600 → 046°</p> <p>GS 3.00° TCH 51</p> <p>1300</p> <p>1300</p> <p>900</p> <p>8.5 NM</p> <p>1.3 NM</p> <p>1.6 NM</p> <p>1 NM</p>				
CATEGORY	A	B	C	D
S-ILS 5	216-½ 200 (200-½)			
S-LOC 5	400-½ 384 (400-½)		400-⅝ 384 (400-⅝)	
CIRCLING	680-1 663 (700-1)	820-1 803 (900-1)	1080-3 1063 (1100-3)	1160-3 1143 (1200-3)

NW-1, 10 JUL 2025 to 07 AUG 2025

NW-1, 10 JUL 2025 to 07 AUG 2025

NORTH BEND, OREGON

AL-929 (FAA)

25219

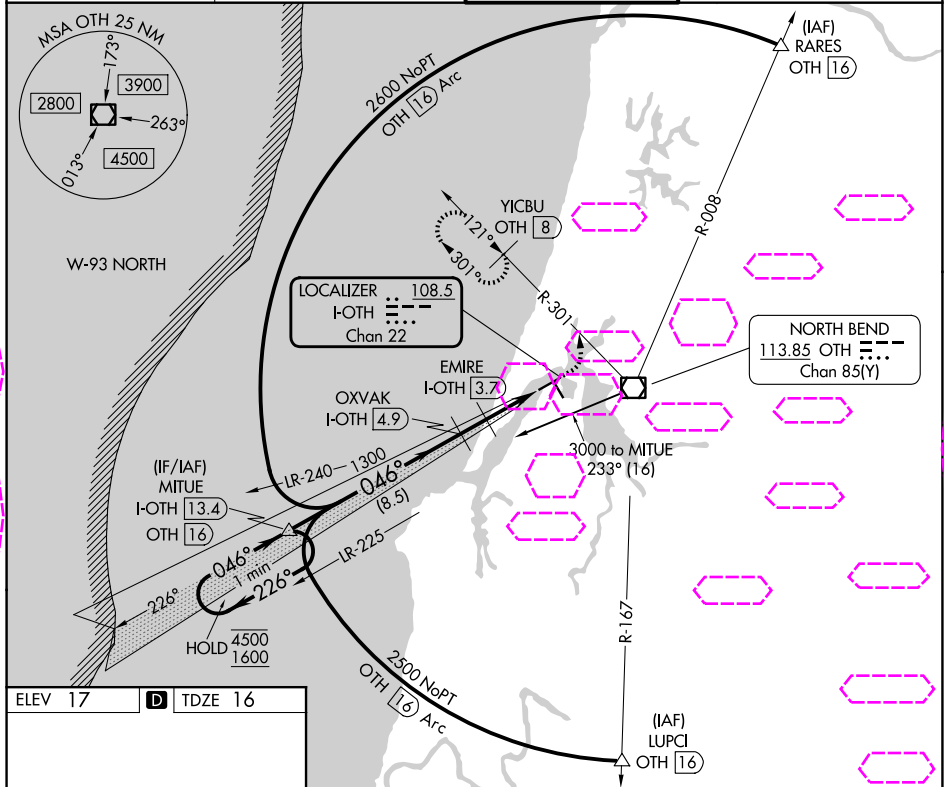
LOC/DME I-OTH	APP CRS	Rwy Ldg	5320
108.5	046°	TDZE	16
Chan 22		Apt Elev	17

ILS Z or LOC Z RWY 5

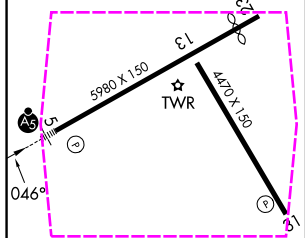
SOUTHWEST OREGON RGNL (OTH)

DME required.	MALSR	MISSED APPROACH: Climb to 500 then climbing left turn to 2600 on heading 340° and OTH VOR/DME R-301 to YICBU/OTH 8 DME and hold, continue climb-in-hold to 2600.
Circling Rwy 13, 31 NA at night.		

AWOS-3PT 135.075	SEATTLE CENTER 127.55 254.35	NORTH BEND TOWER* 118.45 (CTAF) 0	GND CON 127.1
---------------------	---------------------------------	--------------------------------------	------------------



ELEV 17	D	TDZE 16
---------	---	---------



HIRL Rwy 5-23 0

MIRL Rwy 13-31 0

REIL Rwy 13, 23 and 31 0

One Minute Holding Pattern		MITUE I-OTH 13.4 OTH 16		Use I-OTH DME when on the localizer course.		500 ↑	2600 hdg 340°	OTH R-301	YICBU OTH 8
4500 ← 226° 1600 → 046°		OXVAK I-OTH 4.9		EMIRE I-OTH 3.7		I-OTH 2.1		I-OTH 1	
GS 3.00° TCH 51		1300		900					
		8.5 NM		1.3 NM		1.6 NM		1 NM	
CATEGORY		A		B		C		D	
S-ILS 5	216-½ 200 (200-½)								
S-LOC 5	400-½ 384 (400-½)				400-⅝ 384 (400-⅝)				
CIRCLING	680-1 663 (700-1)	820-1 803 (900-1)		1080-3 1063 (1100-3)		1160-3 1143 (1200-3)			

NORTH BEND, OREGON

Amdt 9 31OCT24

43°25'N-124°15'W

ILS Z or LOC Z RWY 5

SOUTHWEST OREGON RGNL (OTH)

NW-1, 07 AUG 2025 to 04 SEP 2025

NW-1, 07 AUG 2025 to 04 SEP 2025