

24305

LOC/DME I-OTH	APP CRS	Rwy Idg	5320
108.5	046°	TDZE	16
Chan 22		Apt Elev	17

COPTER ILS Y or LOC Y RWY 5
SOUTHWEST OREGON RGNL (OTH)

DME required.

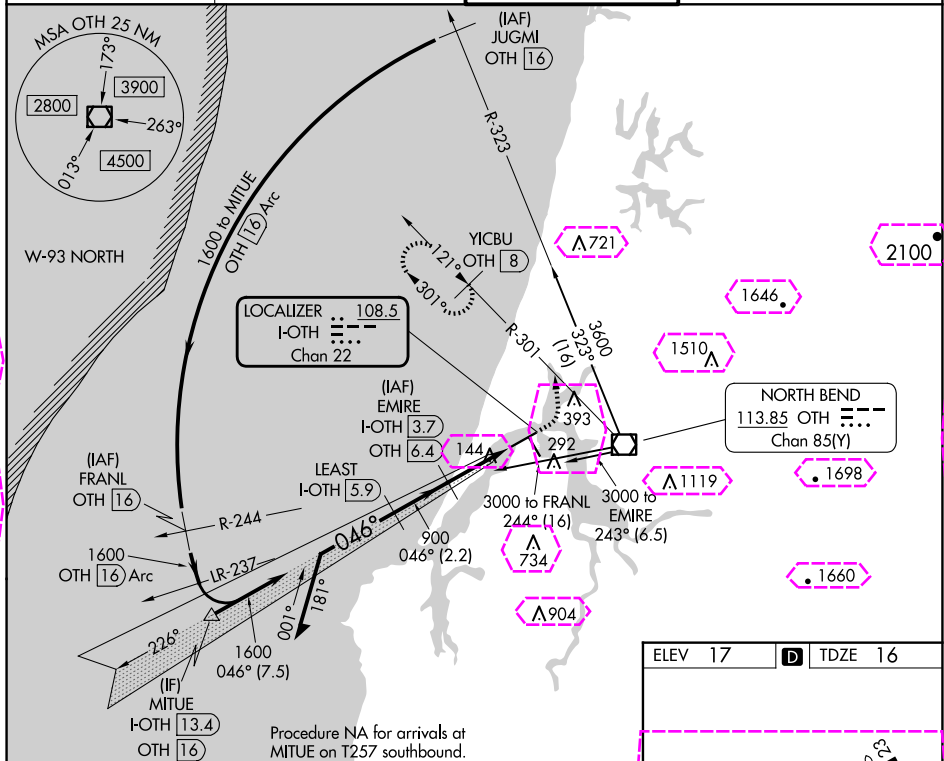


MALSR



MISSED APPROACH: Climb to 500 then climbing left turn to 2600 on heading 340° and OTH VOR/DME R-301 to YICBU/OTH 8 DME and hold, continue climb-in-hold to 2600.

AWOS-3PT 135.075	SEATTLE CENTER 127.55 254.35	NORTH BEND TOWER★ 118.45 (CTAF) 0	GND CON 127.1
----------------------------	--	---	-------------------------



Use I-OTH DME when on the localizer course.

Remain
within 5 NM

EMIRE	
I-OTH	3.7
OTH	6.4

500

20

00

YICE

U

33

1

2200

GS 3.0
HCH 5

$\frac{100^\circ}{51}$

Remain within 5 N

0.46° →

16


226°
LEAST
-OTH 5.9
600

900

4

hdg
340

I-OTH
2.1

A vertical dashed line with a solid arrowhead pointing downwards, intersecting a curved line that represents a road profile. The intersection point is marked with a small circle.

1

8

TWR

470 X 150

CATEGORY	COPTER
H-ILS 5	216-1/2 200 (200-1/2)
H-LOC 5	400-1/2 384 (400-1/2)

HIRL Rwy 5-23 **L**
MIRL Rwy 13-31 **L**
REIL Rwy 13, 23 and 31 **L**

