

APP CRS	Rwy Idg	7615
024°	TDZE	6346
	Apt Elev	6352

RNAV (GPS) RWY 2
RATON MUNI/CREWS FLD (RTN)

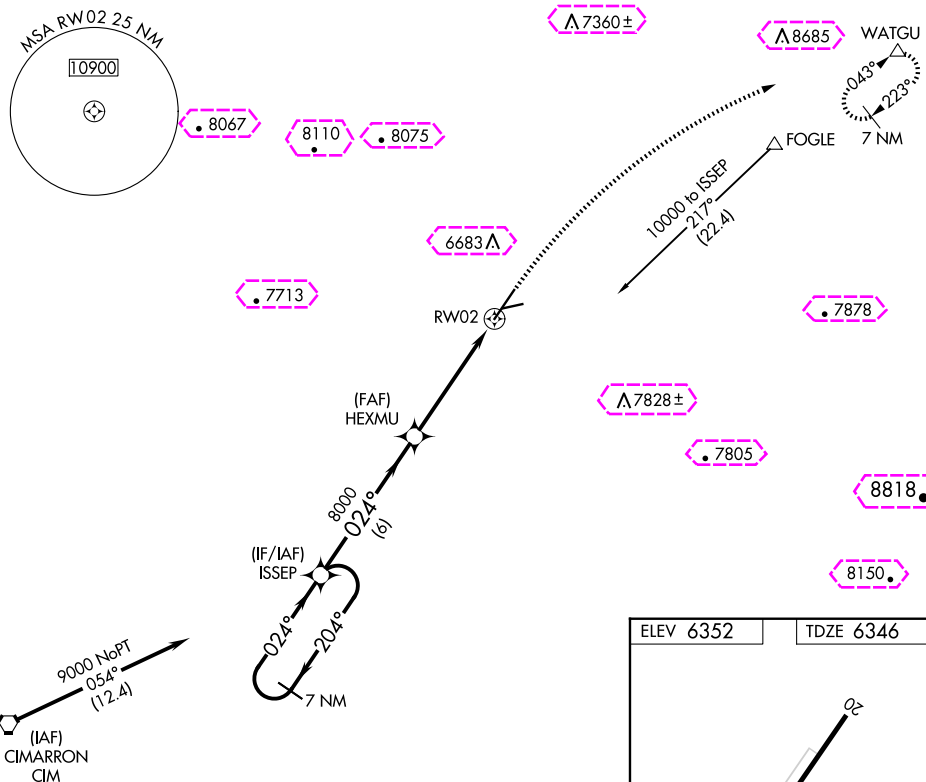
RNP APCH-GPS.

T Procedure NA at night.
Rwy 2 helicopter visibility reduction below 1 SM NA.

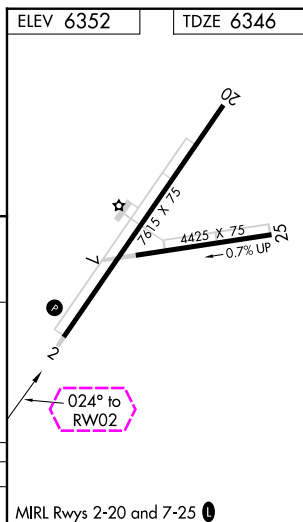
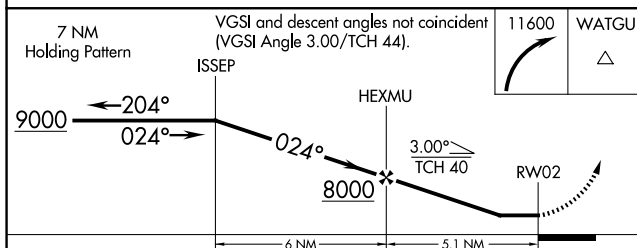
MISSED APPROACH: Climbing right turn to 11 600 direct WATGU and hold, continue climb-in-hold to 11 600.

ASOS
118.375

ALBUQUERQUE CENTER
132.8 346.35

UNICOM
122.8 (CTAF) **L**

Procedure NA for arrivals at CIM VORTAC on V611 south bound.



CATEGORY	A	B	C	D
LNAV MDA	7020-1	674 (700-1)	7020-2	674 (700-2)

MIRL Rwy 2-20 and 7-25 **L**

RATON, NEW MEXICO

AL-920 (FAA)

25219

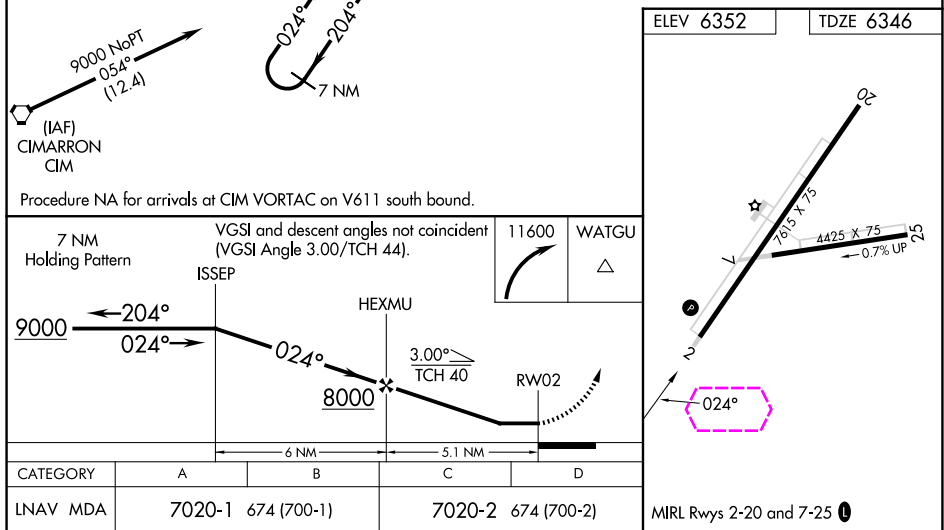
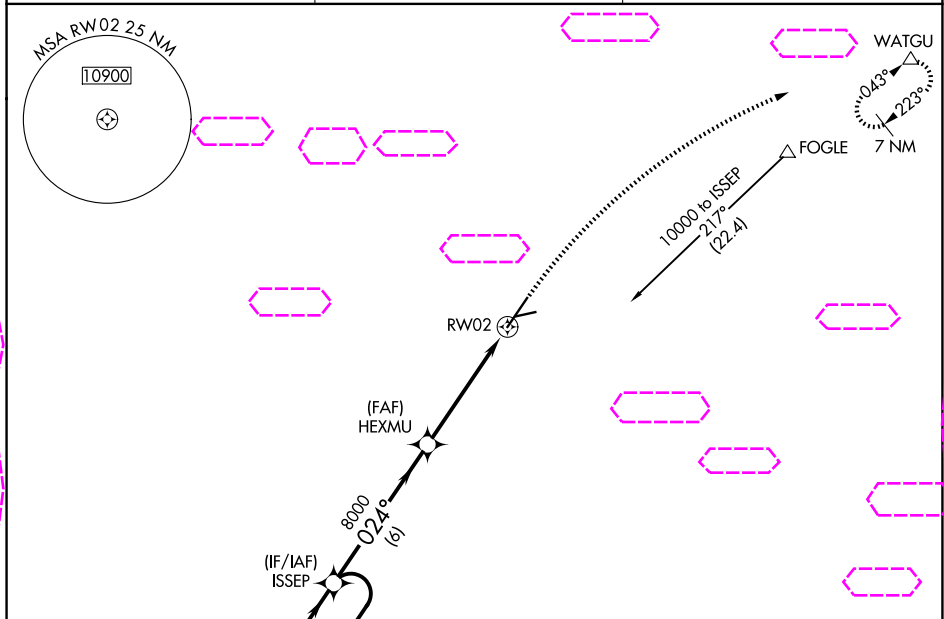
APP CRS	Rwy Ldg	7615
024°	TDZE	6346
	Apt Elev	6352

RNAV (GPS) RWY 2

RATON MUNI/CREWS FLD (RTN)

RNP APCH-GPS.	MISSED APPROACH: Climbing right turn to 11600 direct WATGU and hold, continue climb-in-hold to 11600.
Procedure NA at night. Rwy 2 helicopter visibility reduction below 1 SM NA.	

ASOS 118.375	ALBUQUERQUE CENTER 132.8 346.35	UNICOM 122.8 (CTAF) 0
-----------------	------------------------------------	--------------------------



RATON, NEW MEXICO
Orig-D 02DEC21

36°44'N-104°30'W

RATON MUNI/CREWS FLD (RTN)
RNAV (GPS) RWY 2