

APP CRS	Rwy Idg	4425
248°	TDZE	6338
	Apt Elev	6352

RNAV (GPS) RWY 25
RATON MUNI/CREWS FLD (RTN)

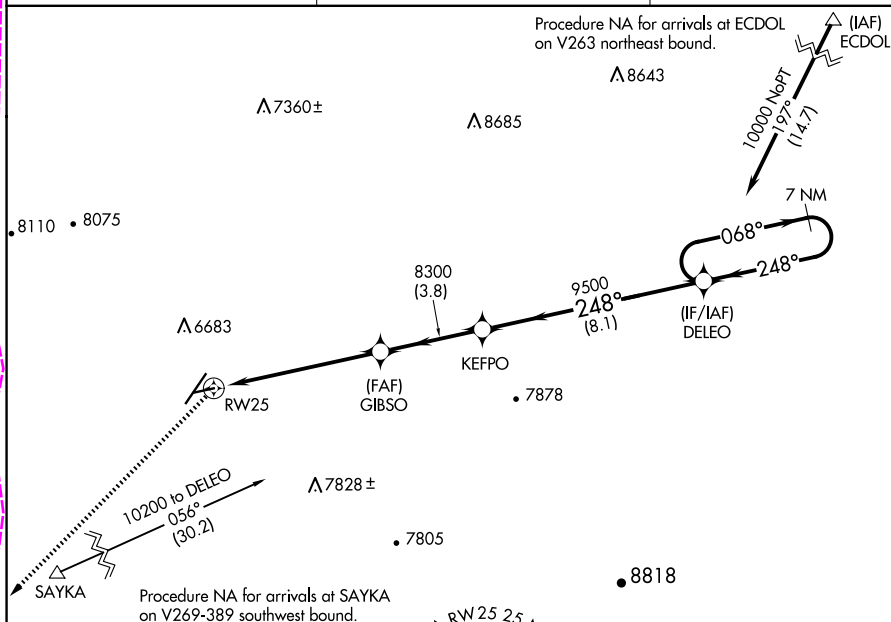
RATON MUNI/CREWS FLD (RTN)

- T** Circling NA for Cats C/D west of Rwy 2-20.
A DME/DME RNP-0.3 NA. Procedure NA at night.
Rwy 2 helicopter visibility reduction below 1 SM NA.

MISSED APPROACH: Climbing left turn to 11000 direct ADOZO and hold.

ASOS
118,375

ALBUQUERQUE CENTER
132.8 346.35

UNICOM
122.8 (CTAF) **L**

MISSED APCH FIX

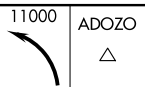


MSA RW 25 25 NM

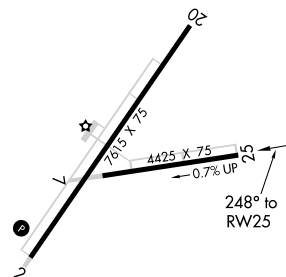
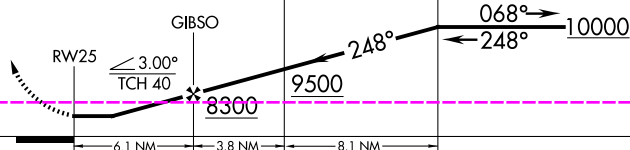
10900

ELEV 6352

TDZE 6338



DELEO 7 NM
Holding Pattern



CATEGORY	A	B	C	D
LNAV MDA	6760-1 422 (500-1)		6760-1 $\frac{3}{8}$ 422 (500-1 $\frac{3}{8}$)	
CIRCLING	6840-1 488 (500-1)	7000-1 648 (700-1)	7020-1 $\frac{3}{4}$ 668 (700-1 $\frac{3}{4}$)	7640-3 1288 (1300-3)

MIRL Rwy 2-20 and 7-25 **L**

RATON, NEW MEXICO

Orig-C 12AUG21

44°N-104°30'W

RATON MUNI/CREWS FLD (RTN)

RNAV (GPS) RWY 25

RATON, NEW MEXICO

AL-920 (FAA)

25219

APP CRS	Rwy Ldg	4425
248°	TDZE	6338
	Apt Elev	6352

RNAV (GPS) RWY 25

RATON MUNI/CREWS FLD (RTN)

RNP APCH - GPS.

▼

⚠

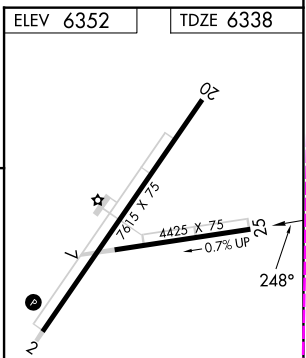
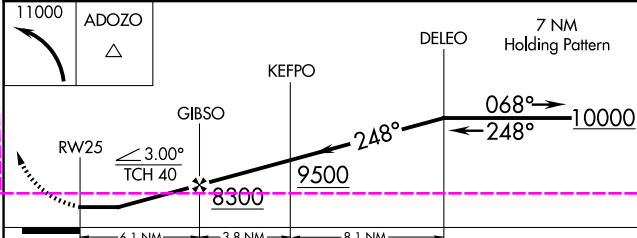
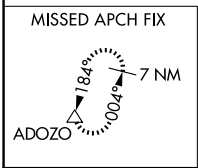
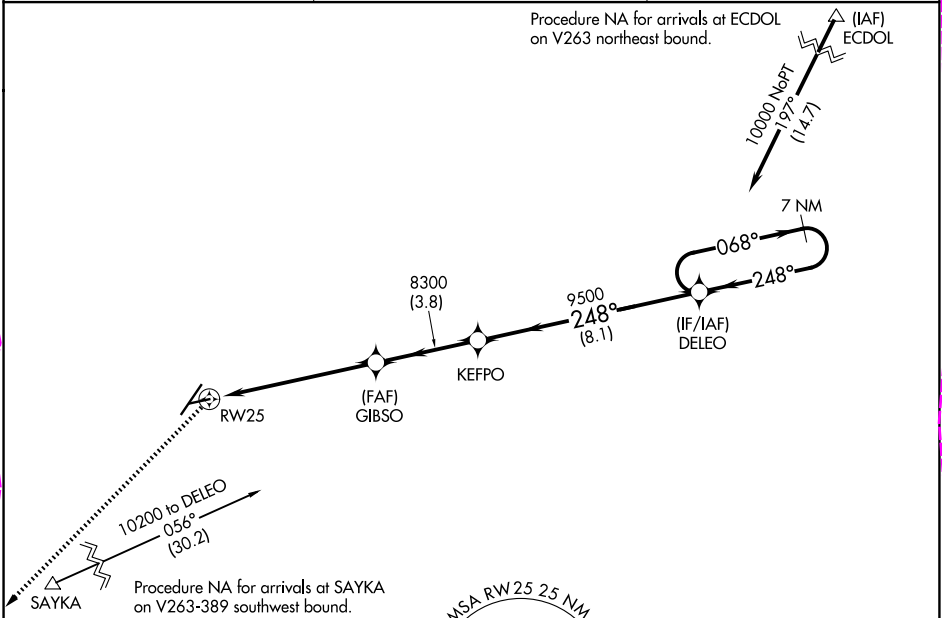
Circling NA for Cats C/D west of Rwy 2-20.

Procedure NA at night.

Rwy 2 helicopter visibility reduction below 1 SM NA.

MISSED APPROACH: Climbing left turn to 11000 direct ADOZO and hold.

ASOS 118.375	ALBUQUERQUE CENTER 132.8 346.35	UNICOM 122.8 (CTAF) 0
-----------------	------------------------------------	--------------------------



CATEGORY	A	B	C	D
LNNAV MDA	6760-1	422 (500-1)	6760-1 3/8	422 (500-1 3/8)
CIRCLING	6840-1 488 (500-1)	7000-1 648 (700-1)	7020-1 3/4 668 (700-1 3/4)	7640-3 1288 (1300-3)

MIRL Rwy 2-20 and 7-25 0

RATON, NEW MEXICO

Orig-D 07AUG25

36°45'N-104°30'W

RATON MUNI/CREWS FLD (RTN)

RNAV (GPS) RWY 25

SW-1, 07 AUG 2025 to 04 SEP 2025

SW-1, 07 AUG 2025 to 04 SEP 2025