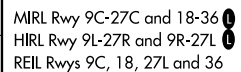
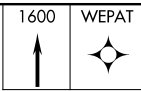


ORLANDO SANFORD INTL (SFB)

MISSED APPROACH: Climb to 1600 direct WEPAT and hold.

CLNC DEL
~~121.35~~
(when twr closed)

A diagram showing a 90-degree angle between two lines. One line is horizontal and the other is vertical. An arc indicates a 275-degree angle from the horizontal line to the vertical line. Another arc indicates a 41-degree angle from the vertical line to a third line.



ORLANDO SANFORD INTL (SFB)
RNAV (GPS) RWY 9R

ORLANDO, FLORIDA

AL-917 (FAA)

25219

WAAS CH 48810 W09B	APP CRS 095°	Rwy Ldg TDZE 39 Apt Elev 55
--	------------------------	---

RNAV (GPS) RWY 9R

ORLANDO SANFORD INTL (SF'B)

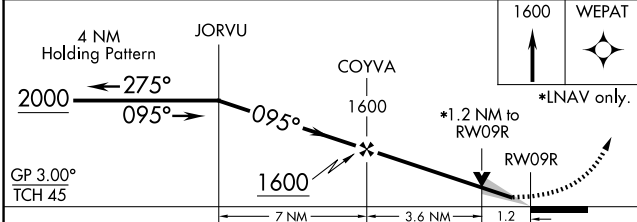
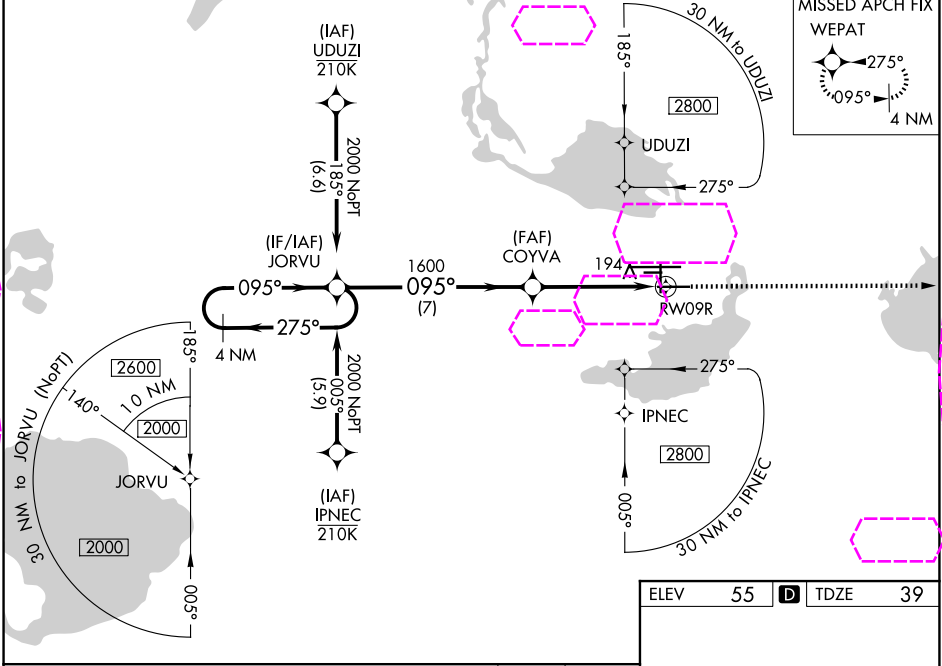
RNP APCH.

▼ For uncompensated Baro-VNAV systems, LNAV/VNAV NA below 0° C or above 54° C. Baro-VNAV and VDP NA when using Orlando Exec altimeter setting. When local altimeter setting not received, use Orlando Exec altimeter setting and increase LPV DA to 282, LNAV/VNAV DA to 501 and all MDA 60 feet; increase LNAV/VNAV all Cats visibilities 1/8 SM and LNAV Cat C/D visibility 1/4 SM. Night landing: Rwy 27C NA.



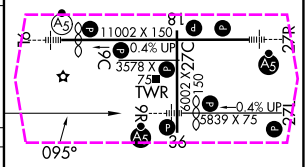
MISSED APPROACH: Climb to 1600 direct WEPAT and hold.

ATIS 125.975	ORLANDO APP CON 135.3 351.9 (N) 119.775 351.9 (S)	SANFORD TOWER★ 120.3(CTAF) 0 254.35	GND CON 121.35 254.35	CLNC DEL 123.975	CLNC DEL 121.35 (When twr closed)
------------------------	---	---	---------------------------------	----------------------------	--



ELEV	55	TDZE	39
------	----	------	----

CATEGORY	A	B	C	D
LPV DA	239-1/2 200 (200-1/2)			
LNAV/VNAV DA	458-1 419 (500-1)			
LNAV MDA	460-1/2 421 (500-1/2)		460-3/4 421 (500-3/4)	
CIRCLING	580-1 525 (600-1)		600-1 1/2 545 (600-1 1/2) 640-2 585 (600-2)	



MIRL Rwy 9C-27C and 18-36
HIRL Rwy 9L-27R and 9R-27L
REIL Rwy 9C, 18, 27L and 36

ORLANDO, FLORIDA
Amdt 1B 30JAN20

28°47'N-81°14'W

ORLANDO SANFORD INTL (SF'B)
RNAV (GPS) RWY 9R

SE-3, 07 AUG 2025 to 04 SEP 2025

SE-3, 07 AUG 2025 to 04 SEP 2025