

WAAS CH 78409 W09A	APP CRS 095°	Rwy Idg 0002 TDZE 55 Apt Elev 55
--	------------------------	---

RNAV (GPS) RWY 9L

ORLANDO SANFORD INTL (SF'B)

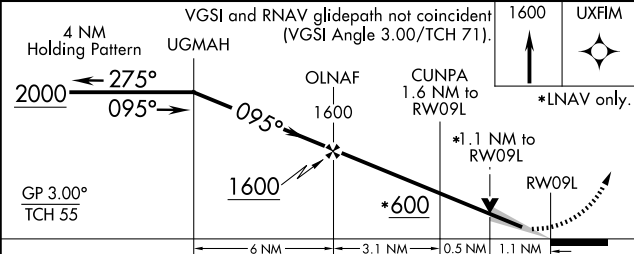
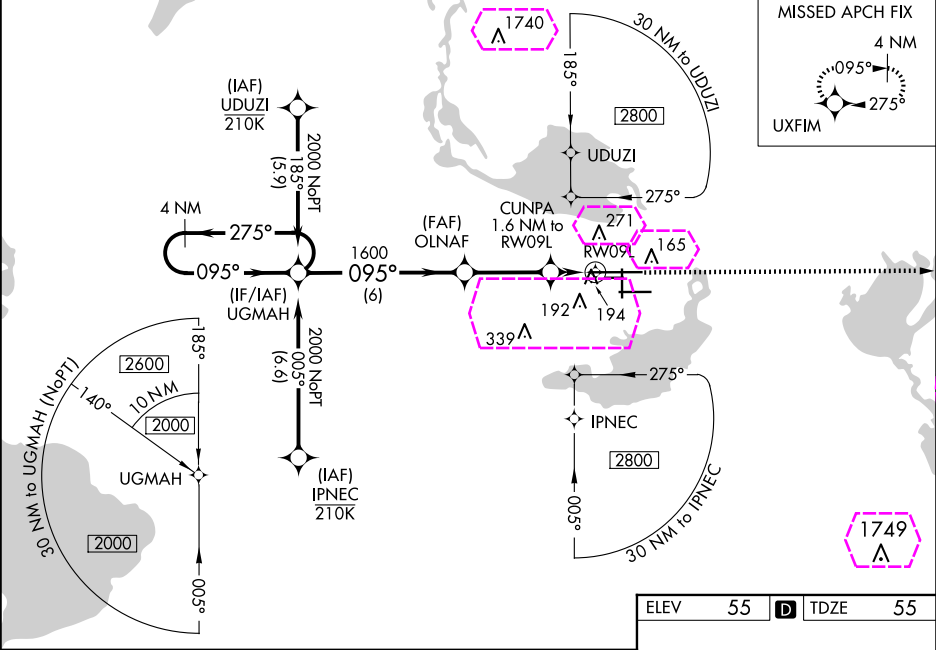
RNP APCH.

For uncompensated Baro-VNAV systems, LNAV/VNAV NA below 0°C or above 54°C. Baro-VNAV and VDP NA when using Exec altimeter setting. When local altimeter setting not received, use Exec altimeter setting and increase LPV DA to 282, LNAV/VNAV DA to 501 and all MDA 60 feet; increase LNAV/VNAV all Cats visibilities ¼ SM and LNAV Cat C/D visibility ¼ SM. Night landing: Rwy 27C NA.

MALSR

MISSED APPROACH: Climb to 1600 direct UXFIM and hold.

ATIS 125.975	ORLANDO APP CON 135.3 351.9 (NORTH) 119.775 351.9 (SOUTH)	SANFORD TOWER★ 120.3 (CTAF) 0 254.35	GND CON 121.35 254.35	CLNC DEL 123.975	CLNC DEL 121.35 (when twr closed)
------------------------	---	--	---------------------------------	----------------------------	--



CATEGORY	A	B	C	D
LPV DA		255-½	200 (200-½)	
LNAV/VNAV DA		355-½	300 (300-½)	
LNAV MDA	460-½ 405 (500-½)	460-¾ 405 (500-¾)	600-1½ 545 (600-1½)	640-2 585 (600-2)
CIRCLING	580-1 525 (600-1)			

ELEV 55 D TDZE 55

193

8t

11002 X 150

0.4% UP

3578 X 150

TWR

6002 X 270

0.4% UP

0839 X 75

36

27R

MIRL Rwy 9C-27C and 18-36

HIRL Rwy 9L-27R and 9R-27L

REIL Rws 9C, 18, 27L and 36

RNAV (GPS) RWY 9L
ORLANDO SANFORD INTL (SFB)

MISSED APPROACH: Climb to 1600 direct UXFIM and hold.

MISSED APCH FIX

4 NM

SE-3, 07 AUG 2025 to 04 SEP 2025

ELEV	55	D	TDZE	55
------	----	----------	------	----

CATEGORY		A	B	C	D
LPV	DA	255-1/2		200 (200-1/2)	
LNAV/ VNAV	DA	355-1/2		300 (300-1/2)	
LNAV	MDA	460-1/2	405 (500-1/2)	460-3/4	405 (500-3/4)
CIRCLING		580-1	525 (600-1)	600-1 1/2 545 (600-1 1/2)	640-2 585 (600-2)

MIRL Rwy 9C-27C and 18-36 **L**
HIRL Rwy 9L-27R and 9R-27L **L**
REIL Rwy 9C, 18, 27L and 36

ORLANDO SANFORD INTL (SFB)
RNAV (GPS) RWY 9L