

ORLANDO, FLORIDA

AL-917 (FAA)

23334

WAAS CH 63209 W27A	APP CRS 275°	Rwy Idg 11002 TDZE 45 Apt Elev 55
--	------------------------	--

RNAV (GPS) RWY 27R

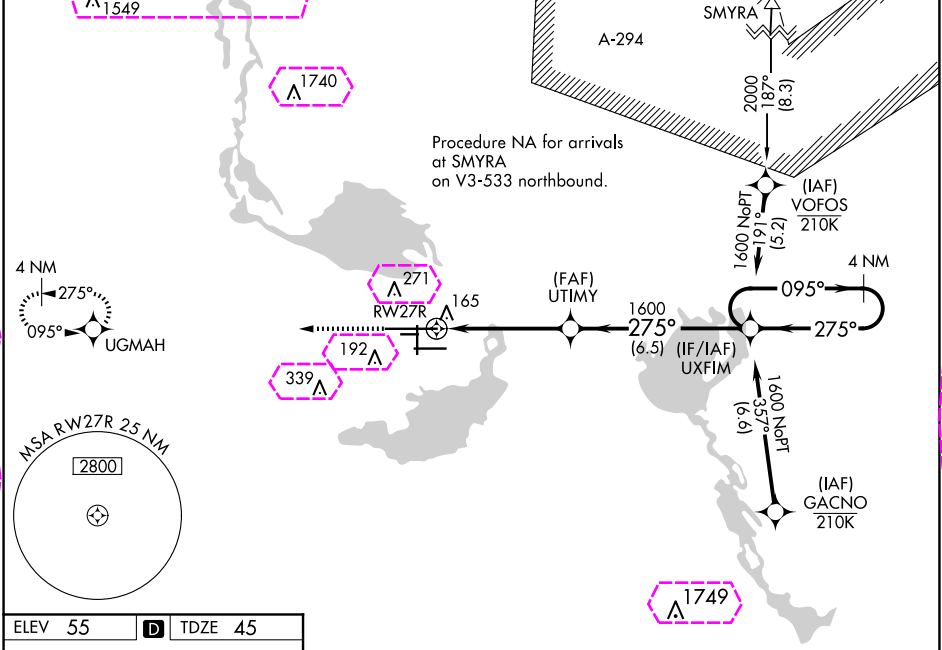
ORLANDO SANFORD INTL (SF'B)

For uncompensated Baro-VNAV systems, LNAV/VNAV NA below 0°C (32°F) or above 54°C (130°F). DME/DME RNP-0.3 NA.
For inop ALS, increase LNAV/VNAV all Cats visibility to 1¼ SM, increase LNAV Cat C/D visibility to 1 SM.

MALSR

MISSED APPROACH:
Climb to 2000 direct UGMAH and hold.

ATIS 125.975	ORLANDO APP CON 135.3 351.9 (NORTH) 119.775 351.9 (SOUTH)	SANFORD TOWER★ 120.3 (CTAF) 0 254.35	GND CON 121.35 254.35	CLNC DEL 123.975	CLNC DEL 121.35 (when twr closed)
------------------------	---	--	---------------------------------	----------------------------	--



ELEV 55	D	TDZE 45
---------	---	---------

2000 UGMAH

VGSI and RNAV glidepath not coincident (VGSI Angle 3.00/TCH 72).

*LNAV only.

UTIMY 1600

UXFIM 4 NM Holding Pattern

GP 3.00° TCH 55

1.1 NM to RWY 27R

1.1 NM 3.7 NM 6.5 NM

CATEGORY	A	B	C	D
LPV DA	245-½	200 (200-½)		
LNAV/VNAV DA	425-⅞	380 (400-⅞)		
LNAV MDA	420-½	375 (400-½)	420-⅝	375 (400-⅝)
CIRCLING	580-1	525 (600-1)	600-1½ 545 (600-1½)	640-2 585 (600-2)

ORLANDO, FLORIDA
Amdt 4 12OCT17

28°47'N-81°14'W

ORLANDO SANFORD INTL (SF'B)
RNAV (GPS) RWY 27R

ORLANDO, FLORIDA

AL-917 (FAA)

25219

WAAS CH 63209 W27A	APP CRS 275°	Rwy Ldg 11002 TDZE 45 Apt Elev 55
--	------------------------	--

RNAV (GPS) RWY 27R

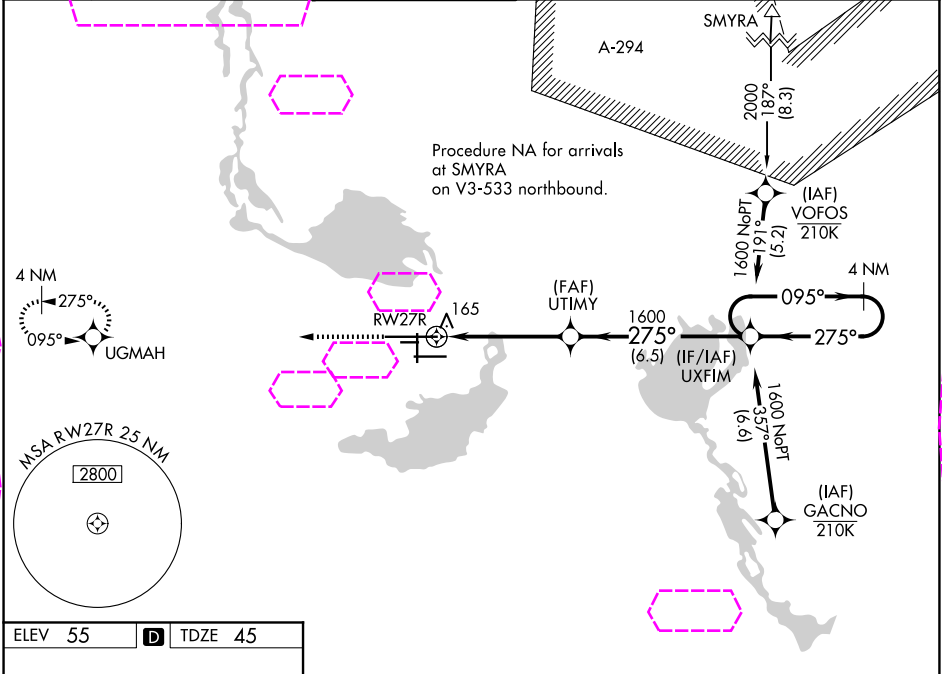
ORLANDO SANFORD INTL (SF'B)

For uncompensated Baro-VNAV systems, LNAV/VNAV NA below 0°C (32°F) or above 54°C (130°F). DME/DME RNP-0.3 NA.
For inop ALS, increase LNAV/VNAV all Cats visibility to 1¼ SM, increase LNAV Cat C/D visibility to 1 SM.

MALSR

MISSED APPROACH:
Climb to 2000 direct UGMAH and hold.

ATIS 125.975	ORLANDO APP CON 135.3 351.9 (N) 119.775 351.9 (S)	SANFORD TOWER★ 120.3 (CTAF) 0 254.35	GND CON 121.35 254.35	CLNC DEL 123.975	CLNC DEL 121.35 (When twr closed)
------------------------	---	--	---------------------------------	----------------------------	--



ELEV 55	D	TDZE 45
----------------	----------	----------------

2000 UGMAH

VGSI and RNAV glidepath not coincident (VGSI Angle 3.00/TCH 72).

*LNAV only.

UTIMY 1600

UXFIM 1600

4 NM Holding Pattern

GP 3.00° TCH 55

1.1 NM to RWY 27R

1.1 NM 3.7 NM 6.5 NM

CATEGORY	A	B	C	D
LPV DA	245-½ 200 (200-½)			
LNAV/VNAV DA	425-⅞ 380 (400-⅞)			
LNAV MDA	420-½ 375 (400-½)		420-⅝ 375 (400-⅝)	
CIRCLING	580-1 525 (600-1)		600-1½ 640-2 545 (600-1½) 585 (600-2)	

ORLANDO, FLORIDA
Amdt 4 12OCT17

28°47'N-81°14'W

ORLANDO SANFORD INTL (SF'B)
RNAV (GPS) RWY 27R