

ORLANDO, FLORIDA

AL-917 (FAA)

23334

APP CRS	Rwy Idg	5839
275°	TDZE	28
	Apt Elev	55

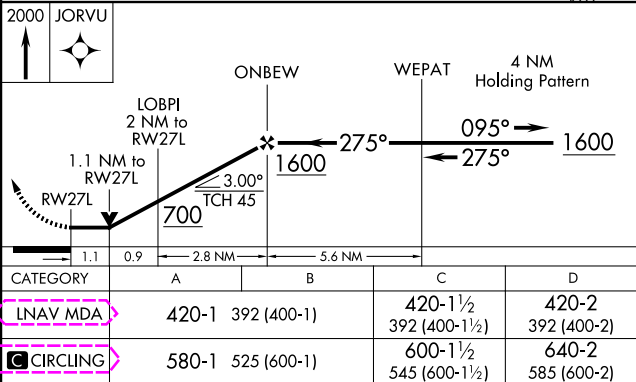
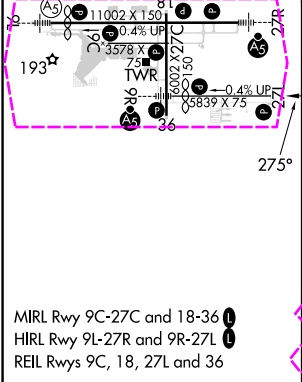
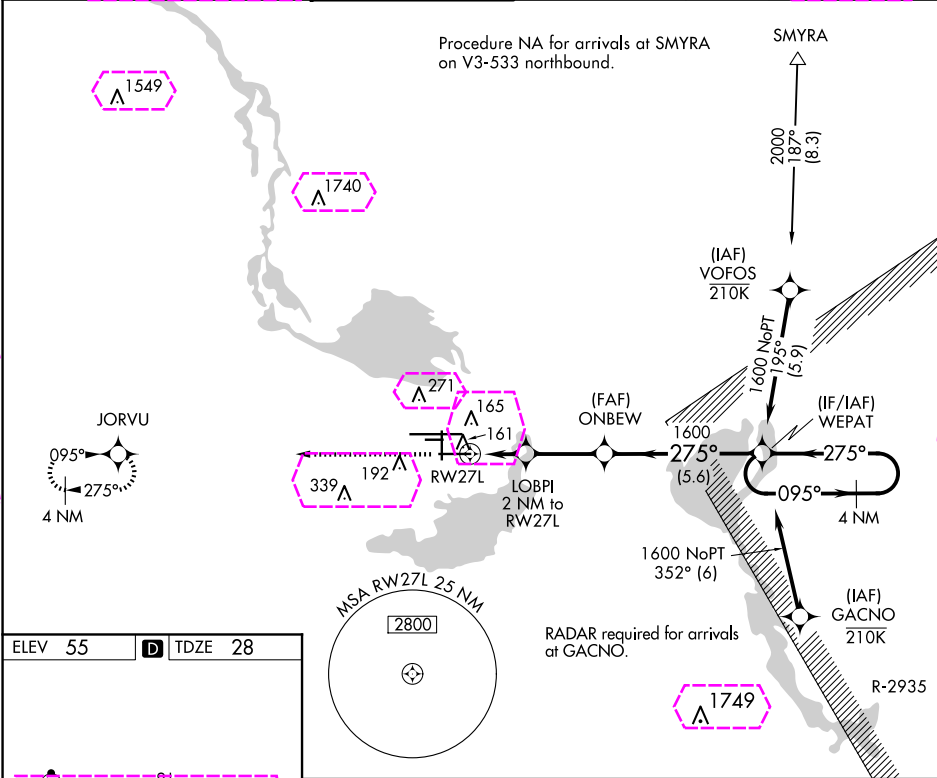
RNAV (GPS) RWY 27L

ORLANDO SANFORD INTL (SF'B)

Night Landing: Rwy 27C NA. DME/DME RNP-0.3 NA. Visibility reduction by helicopters NA. When local altimeter setting not received, use Exec altimeter setting: increase all MDAs 60 feet and visibility Cat C ¼ SM. VDP NA when using Exec altimeter setting.

MISSED APPROACH: Climb to 2000 direct JORVU and hold.

ATIS	ORLANDO APP CON	SANFORD TOWER*	GND CON	CLNC DEL	CLNC DEL
125.975	135.3 351.9 (NORTH) 119.775 351.9 (SOUTH)	120.3 (CTAF) 0 254.35	121.35 254.35	123.975	121.35 (when twr closed)



ORLANDO, FLORIDA	28°47'N-81°14'W	ORLANDO SANFORD INTL (SF'B)
Orig-B 23APR20		RNAV (GPS) RWY 27L

ORLANDO, FLORIDA

AL-917 (FAA)

25219

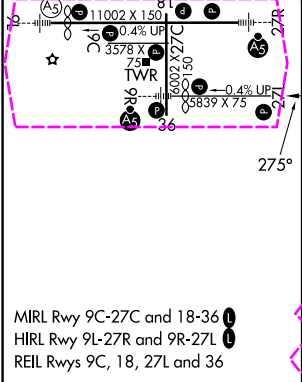
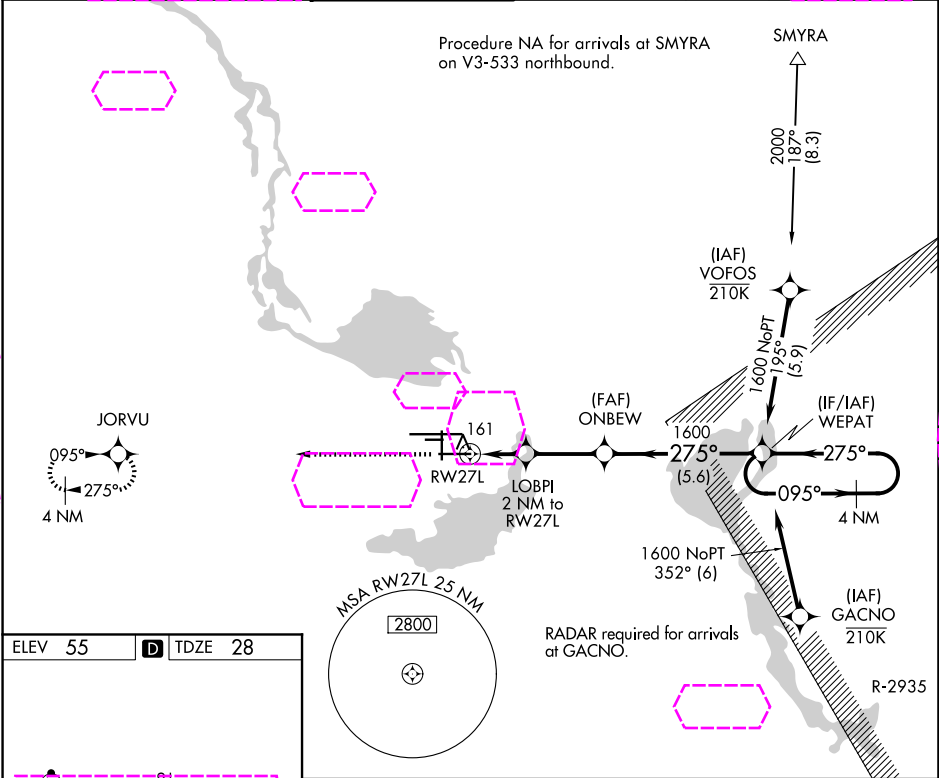
APP CRS	Rwy Ldg	5839
275°	TDZE	28
	Apt Elev	55

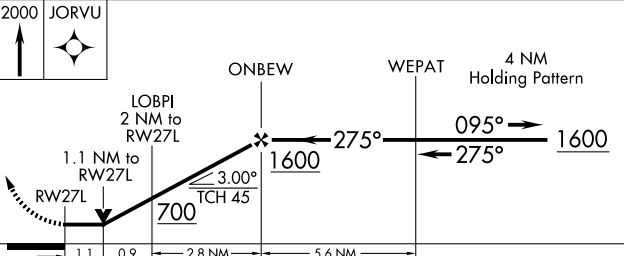
RNAV (GPS) RWY 27L
ORLANDO SANFORD INTL (SF'B)

⚠ Night Landing: Rwy 27C NA. DME/DME RNP-0.3 NA. Visibility reduction by helicopters NA. When local altimeter setting not received, use Orlando Exec altimeter setting: increase all MDAs 60 feet and visibility Cat C ¼ SM. VDP NA when using Orlando Exec altimeter setting.

MISSED APPROACH: Climb to 2000 direct JORVU and hold.

ATIS	ORLANDO APP CON	SANFORD TOWER*	GND CON	CLNC DEL	CLNC DEL
125.975	135.3 351.9 (N) 119.775 351.9 (S)	120.3 (CTAF) 0 254.35	121.35 254.35	123.975	121.35 (When twr closed)



2000 JORVU					
CATEGORY	A		B	C	D
LNNAV MDA	420-1 392 (400-1)		420-1½ 392 (400-1½)	420-2 392 (400-2)	
CIRCLING	580-1 525 (600-1)		600-1½ 545 (600-1½)	640-2 585 (600-2)	

ORLANDO, FLORIDA
Orig-B 23APR20

28°47'N-81°14'W

ORLANDO SANFORD INTL (SF'B)
RNAV (GPS) RWY 27L

SE-3, 07 AUG 2025 to 04 SEP 2025

SE-3, 07 AUG 2025 to 04 SEP 2025