

LOC/DME I-OOS 111.55 Chan 52 (Y)	APP CRS 095°	Rwy Idg 5000 TDZE 39 Apt Elev 55
--	------------------------	---

ILS or LOC RWY 9R
ORLANDO SANFORD INTL (SFB)

▼
▲ When local altimeter setting not received, use Exec altimeter setting and increase S-ILS DA to 282, and all MDA 60 feet; increase S-LOC 9R Cat C, D visibility $\frac{1}{4}$ mile, Circling Cat C visibility $\frac{1}{8}$ mile and JOSKA Fix Minimums S-LOC 9R Cats C, D visibility $\frac{1}{4}$ mile. Simultaneous approach authorized with Rwy 9L. Night landing: Rwy 27C NA.

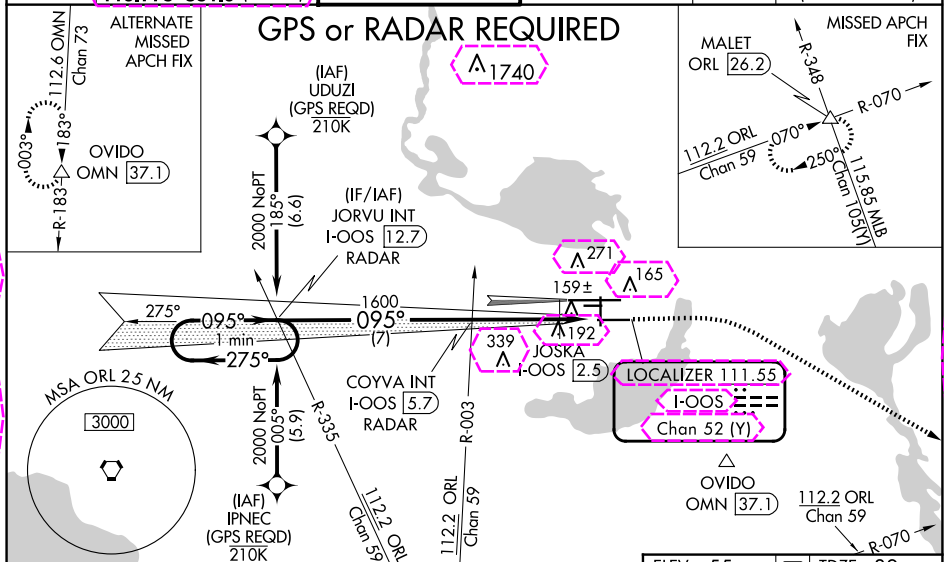
MALSR



MISSED APPROACH: Climb to 500 then climbing right turn to 2800 on heading 125° and ORL VORTAC R-070 to MALET INT/ORL 26.2 DME and hold.

ATIS	ORLANDO APP CON	SANFORD TOWER ★	GND CON	CLNC DEL	CLNC DEL
125.975	135.3 (NORTH) 119.775 351.9 (SOUTH)	120.3 (CTAF) 0 254.35	121.35 254.35	123.975	121.35 (When twr closed)

GPS or RADAR REQUIRED

 Δ_{1740} 

SE-3, 10 JUL 2025 to 07 AUG 2025

JORVU INT	COYVA INT	JOSKA	ORL	MALET
I-OOS 12.7	I-OOS 5.7	I-OOS 2.5	R-070	△

One Minute Holding Pattern

2000 ← 275°
095° →

GS 3.00°
TCH 45

1600

1600

500

2800

hdg 125°

*600 when using Exec altimeter setting.

7 NM

3.2 NM

1.6 NM

CATEGORY	A	B	C	D
S-ILS 9R	239-1/2		200 (200-1/2)	
S-LOC 9R	540-1/2	501 (500-1/2)	540-1	501 (500-1)
CIRCLING	580-1	525 (600-1)	600-1 1/2 545 (600-1 1/2)	640-2 585 (600-2)
JOSKA FIX MINIMUMS (DME REQUIRED)				
S-LOC 9R	440-1/2	401 (400-1/2)	440-3/4	401 (400-3/4)
CIRCLING	580-1	525 (600-1)	600-1 1/2 545 (600-1 1/2)	640-2 585 (600-2)

ELEV 55
D
TDZE 39

MIRL Rwy 9C-27C and 18-36 L

HIRL Rwy 9L-27R and 9R-27L L

REIL Rwy 9C, 18, 27L and 36

FAF to MAP 4.8 NM					
Knots	60	90	120	150	180
Min:Sec	4:48	3:12	2:24	1:55	1:36

SE-3. 07 AUG 2025 to 04 SEP 2025