

ORLANDO, FLORIDA

AL-917 (FAA)

24081

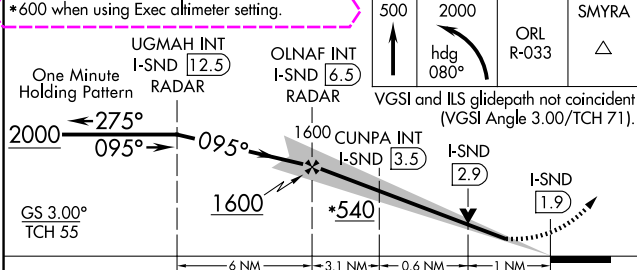
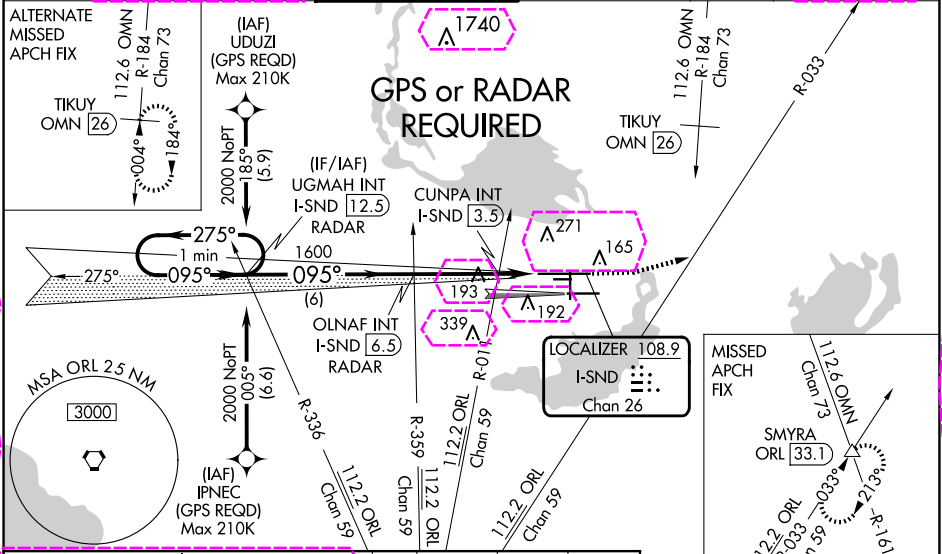
LOC/DME I-SND 108.9 Chan 26	APP CRS 095°	Rwy Idg 10002 TDZE 55 Apt Elev 55
---	------------------------	--

ILS or LOC RWY 9L
ORLANDO SANFORD INTL (SF'B)

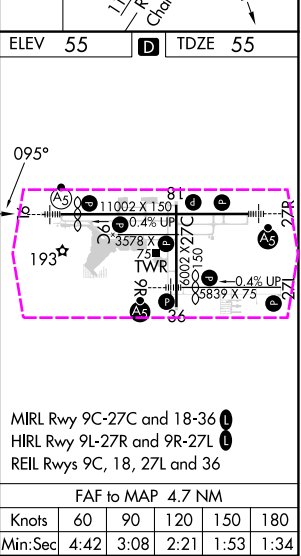
⚠ VDP NA with Exec altimeter setting. When local altimeter setting not received, use Exec altimeter setting: increase DA to 298 feet; increase all MDAs 60 feet and visibility Cats C and D ½ SM. Simultaneous approach authorized with Rwy 9R. Circling to Rwy 27C NA at night.

MALSR
MISSED APPROACH: Climb to 500 then climbing left turn to 2000 on heading 080° and ORL VORTAC R-033 to SMYRA INT/ORL 33.1 DME and hold.

ATIS 125.975	ORLANDO APP CON 135.3 351.9 (NORTH) 119.775 351.9 (SOUTH)	SANFORD TOWER* 120.3 (CTAF) 0 254.35	GND CON 121.35 254.35	CLNC DEL 123.975	CLNC DEL 121.35 (when twr closed)
------------------------	---	---	---------------------------------	----------------------------	--



CATEGORY	A	B	C	D
S-ILS 9L	255-1/2	200 (200-1/2)		
S-LOC 9L	540-1/2	485 (500-1/2)	540-1	485 (500-1)
CIRCLING	580-1	525 (600-1)	600-1 1/2 545 (600-1 1/2)	640-2 585 (600-2)
CUNPA FIX MINIMUMS (DUAL VOR RECEIVER OR DME REQUIRED)				
S-LOC 9L	460-1/2	405 (500-1/2)	460-3/4	405 (500-3/4)
CIRCLING	580-1	525 (600-1)	600-1 1/2 545 (600-1 1/2)	640-2 585 (600-2)



ORLANDO, FLORIDA
Amdt 4C 29DEC22

28°47'N-81°14'W

ORLANDO SANFORD INTL (SF'B)
ILS or LOC RWY 9L

ORLANDO, FLORIDA

AL-917 (FAA)

25219

LOC/DME I-SND	APP CRS	Rwy Ldg
108.9	095°	10002
Chan 26		TDZE 55
		Apt Elev 55

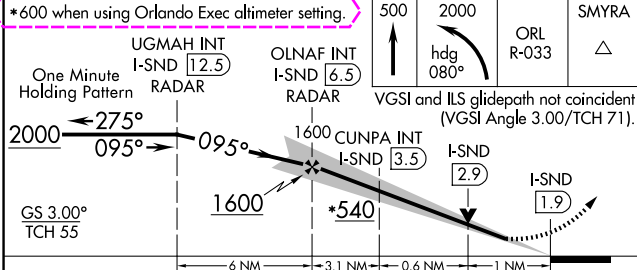
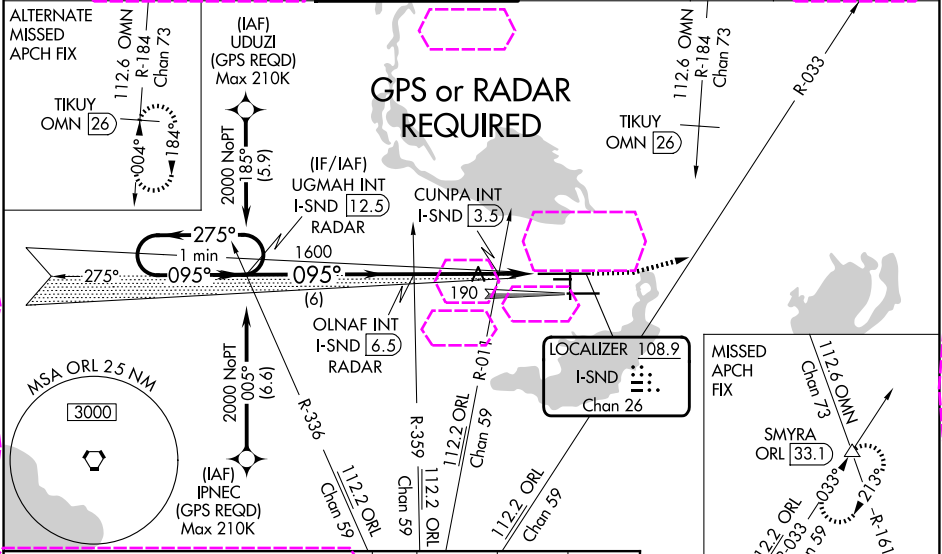
ILS or LOC RWY 9L

ORLANDO SANFORD INTL (SF'B)

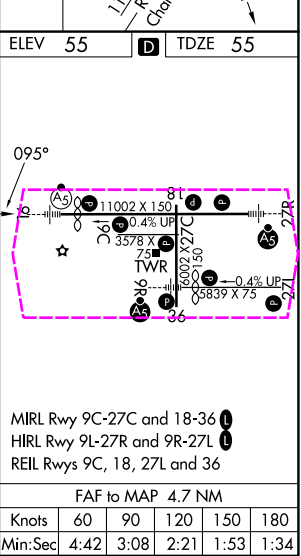
VDP NA with Orlando Exec altimeter setting. When local altimeter setting not received, use Orlando Exec altimeter setting: increase DA to 298 feet; increase all MDAs 60 feet and visibility Cats C and D ½ SM. Simultaneous approach authorized with Rwy 9R. Circling to Rwy 27C NA at night.

MALS
MISSED APPROACH: Climb to 500 then climbing left turn to 2000 on heading 080° and ORL VORTAC R-033 to SMYRA INT/ORL 33.1 DME and hold.

ATIS	ORLANDO APP CON	SANFORD TOWER*	GND CON	CLNC DEL	CLNC DEL
125.975	135.3 351.9 (N) 119.775 351.9 (S)	120.3(CTAF) 0 254.35	121.35 254.35	123.975	121.35 (When twr closed)



CATEGORY	A	B	C	D
S-ILS 9L	255-½ 200 (200-½)			
S-LOC 9L	540-½	485 (500-½)	540-1	485 (500-1)
CIRCLING	580-1	525 (600-1)	600-1½ 545 (600-1½)	640-2 585 (600-2)
CUNPA FIX MINIMUMS (DUAL VOR RECEIVER OR DME REQUIRED)				
S-LOC 9L	460-½	405 (500-½)	460-¾	405 (500-¾)
CIRCLING	580-1	525 (600-1)	600-1½ 545 (600-1½)	640-2 585 (600-2)



ORLANDO, FLORIDA
Amdt 4C 29DEC22

28°47'N-81°14'W

ORLANDO SANFORD INTL (SF'B)
ILS or LOC RWY 9L