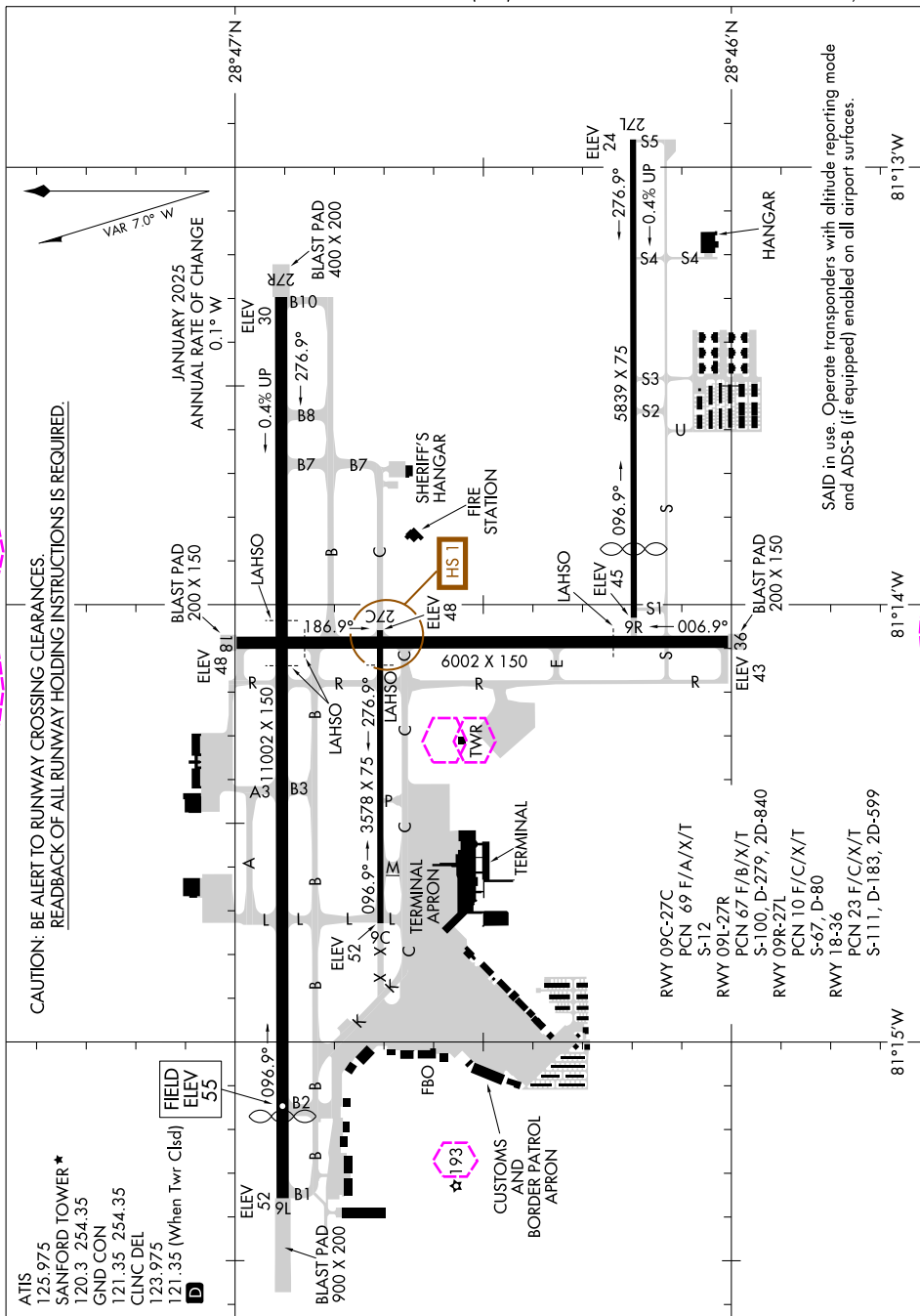


AIRPORT DIAGRAM

AL-917 (FAA)

ORLANDO SANFORD INTL (SFB)

ORLANDO, FLORIDA



SAID in use. Operate transponders with altitude reporting mode and ADS-B (if equipped) enabled on all airport surfaces.

SE-3, 10 JUL 2025 to 07 AUG 2025

AIRPORT DIAGRAM

25107

ORLANDO, FLORIDA

ORLANDO SANFORD INTL (SFB)

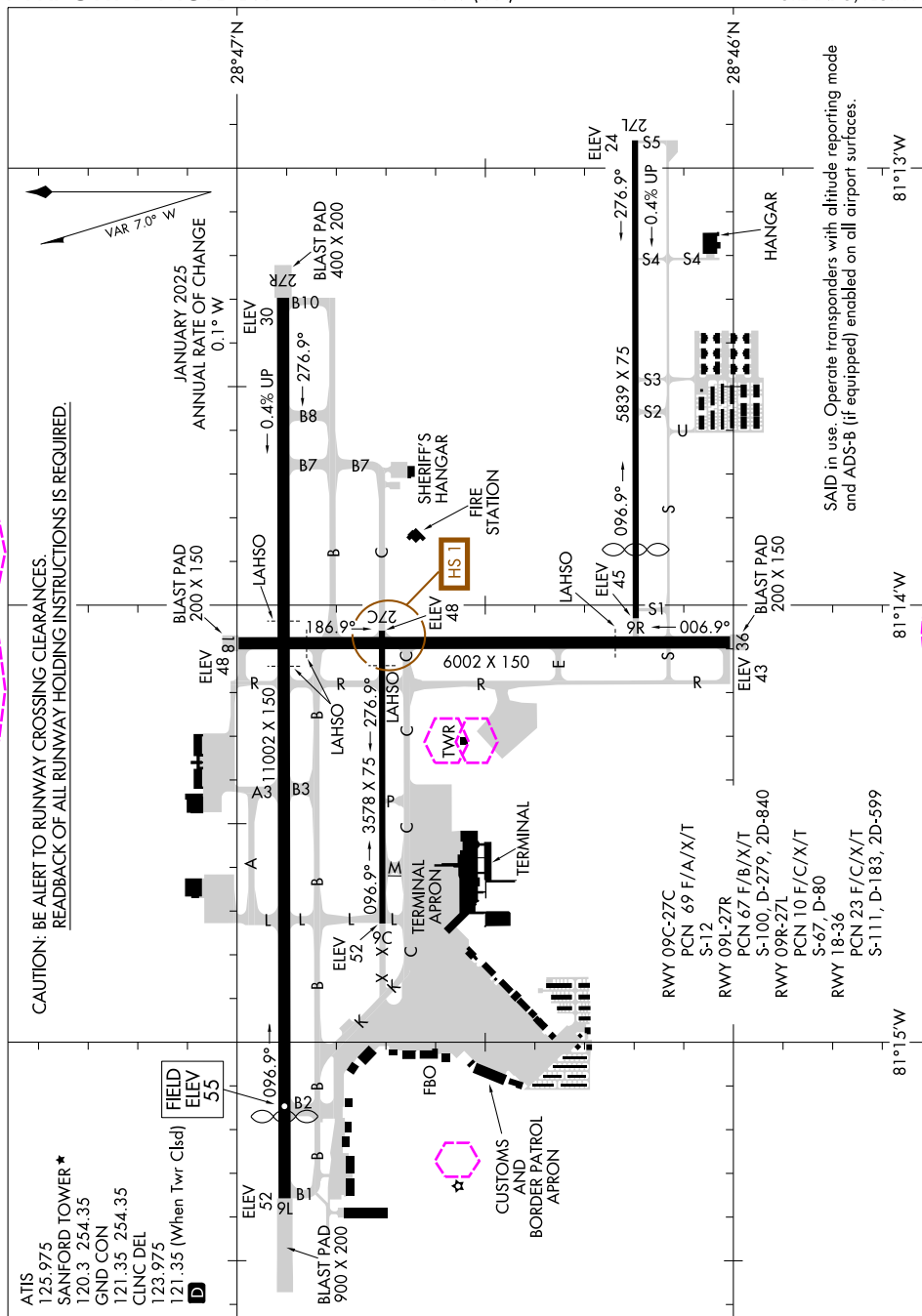
25219

AIRPORT DIAGRAM

AL-917 (FAA)

ORLANDO SANFORD INTL (SFB)

ORLANDO, FLORIDA



SE-3, 07 AUG 2025 to 04 SEP 2025

AIRPORT DIAGRAM

25219

ORLANDO, FLORIDA

ORLANDO SANFORD INTL (SFB)