

FORT CAVAZOS (KILLEEN), TEXAS

AL-906 (FAA)

25219

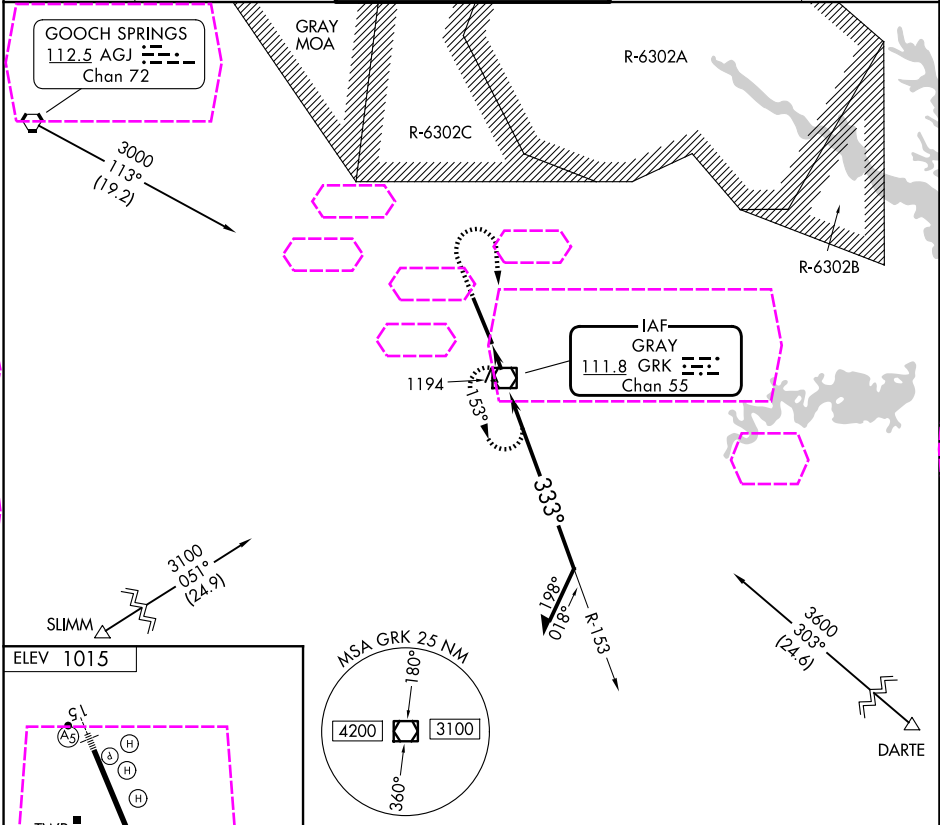
VOR/DME GRK	APP CRS	Rwy Ldg	N/A
111.8	333°	TDZE	N/A
Chan 55		Apt Elev	1015

VOR-A

ROBERT GRAY AAF (GRK)

NA ASR/PAR	Circling NA W of Rwy 15-33.	MISSED APPROACH: Climb to 2000 then climbing right turn to 3000 direct GRK VOR/DME and hold.
---------------	-----------------------------	--

ATIS	GRAY APP CON	GRAY TOWER	GND CON	CLNC DEL
124.9	120.075 323.15	120.75(CTAF) 285.5	121.8 279.5	126.2 251.1



SC-3, 07 AUG 2025 to 04 SEP 2025

SC-3, 07 AUG 2025 to 04 SEP 2025

ELEV 1015				
TWR				
HIRL Rwy 15-33				
FAF to MAP 1.4 NM				
Knots	60	90	120	150
Min:Sec	1:24	0:56	0:42	0:34
CATEGORY				
A				
B				
C				
D				
CIRCILING				
1540-1 525 (600-1)				
1560-1½ 545 (600-1½)				
1620-2 605 (700-2)				

FORT CAVAZOS (KILLEEN), TEXAS
Amdt 2D 30NOV23

31°04'N-97°50'W

ROBERT GRAY AAF (GRK)
VOR-A