

23334

VOR/DME GRK <b>111.8</b> Chan <b>55</b>	APP CRS <b>152°</b>	Rwy Idg TDZE Apt Elev	<b>9997</b> <b>1015</b> <b>1015</b>
---	------------------------	-----------------------------	---

VOR RWY 15  
ROBERT GRAY AAF (GRK)

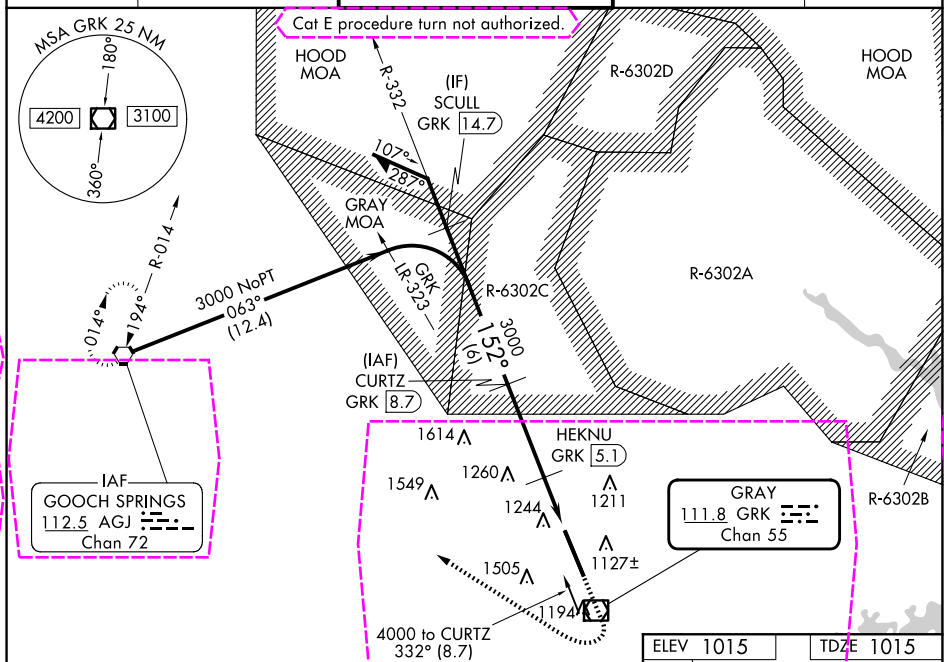
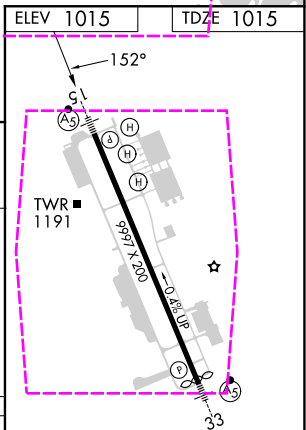
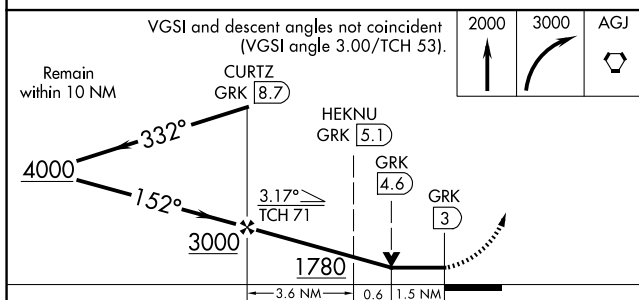
DME required.

**NA** Circling NA west of Rwy 15 and 33. For inop ALS, increase S-15 Cat E visibility to 1% SM.

MALSR

**MISSED APPROACH:** Climb to 2000 then climbing right turn to 3000 direct AGJ VORTAC and hold.

ATIS 124.9	GRAY APP CON 120.075 323.15	GRAY TOWER 120.75(CTAF) 285.5	GND CON 121.8 279.5	CLNC DEL 126.2 251.1
---------------	--------------------------------	----------------------------------	------------------------	-------------------------

 $\Lambda 1616^\pm$ 

CATEGORY	A	B	C	D	E	33					
S-15	1560/24	545 (600-1/2)	1560/60 545 (600-1 1/4)			HIRL Rwy 15-33					
						FAF to MAP 5.7 NM					
CIRCLING	1560-1	545 (600-1)	1560-1 <sup>58</sup> 545 (600-1 <sup>58</sup> )	1620-2 605 (700-2)	1740-2 <sup>1/2</sup> 725 (800-2 <sup>1/2</sup> )	Knots	60	90	120	150	180
						Min:Sec	5:42	3:48	2:51	2:17	1:54

FORT CAVAZOS (KILLEEN), TEXAS  
Amdt 3D 30NOV23

31°04'N-97°50'W

ROBERT GRAY AAF (GRK)  
VOR RWY 15


FORT CAVAZOS (KILLEEN), TEXAS

AL-906 (FAA)

25219

VOR/DME GRK	APP CRS	Rwy Ldg	9997
111.8	152°	TDZE	1015
Chan 55		Apt Elev	1015

VOR RWY 15  
ROBERT GRAY AAF (GRK)

DME required.		MALSR	MISSED APPROACH: Climb to 2000 then climbing right turn to 3000 direct AGJ VORTAC and hold.	
NA ASR/PAR	Circling NA west of Rws 15 and 33. For inop ALS, increase S-15 Cat E visibility to 1% SM.			
ATIS 124.9	GRAY APP CON 120.075 323.15	GRAY TOWER 120.75(CTAF) 285.5		GND CON 121.8 279.5
				CLNC DEL 126.2 251.1

