

FORT CAVAZOS (KILLEEN), TEXAS

AL-906 (FAA)

25219

WAAS CH 82399 W33A	APP CRS 333°	Rwy Ldg TDZE 995 Apt Elev 1015
--	------------------------	--

RNAV (GPS) RWY 33

ROBERT GRAY AAF (GRK)

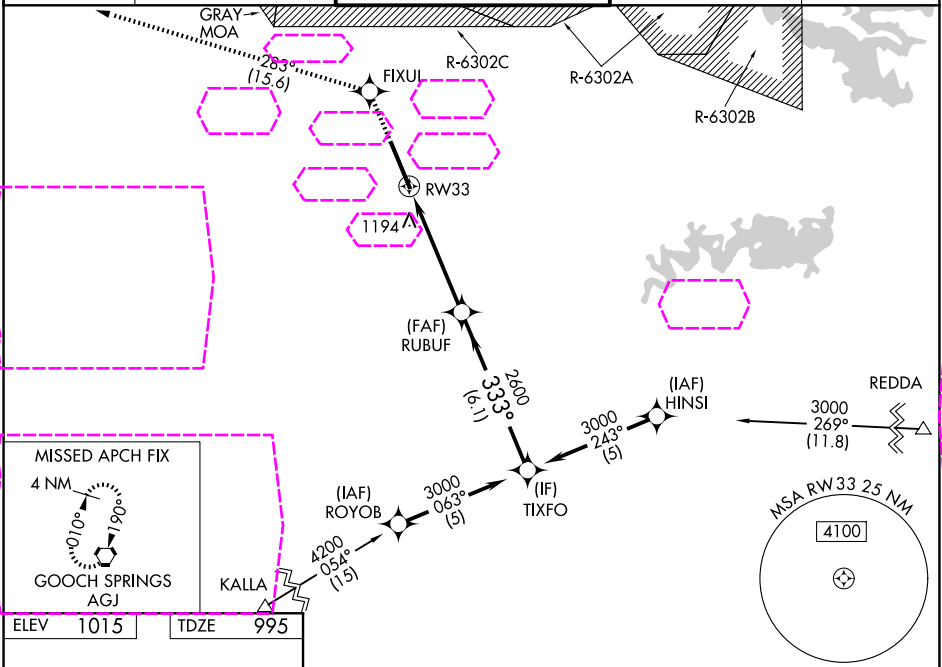
RNP APCH - GPS.

For uncompensated Baro-VNAV systems, LNAV/VNAV NA below -17°C or above 54°C. Circling NA west of Rwy 15-33.
For inop ALS, increase LPV Cat E visibility to ¾ SM, LNAV/VNAV Cat E visibility to 2 SM, and LNAV Cat E visibility to 1½ SM.

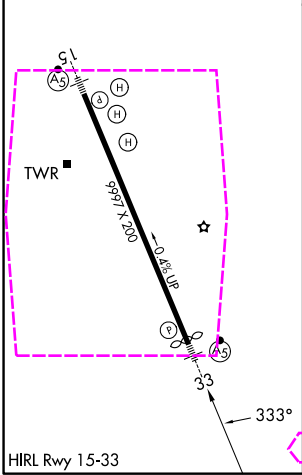


MISSED APPROACH: Climb to 3000 direct FIXUL and on track 283° to AGJ VORTAC and hold.

ATIS 124.9	GRAY APP CON 120.075 323.15	GRAY TOWER 120.75(CTAF) 285.5	GND CON 121.8 279.5	CLNC DEL 126.2 251.1
----------------------	---------------------------------------	---	-------------------------------	--------------------------------



ELEV 1015	TDZE 995
-----------	----------



3000 ↑	FIXUL ✱	tr 283° ◡	AGJ ◡	VGSI and RNAV glidepath not coincident (VGSI Angle 3.00/TCH 50).		
*LNAV only.				TIXFO 3000		
RW33		RUBUF 2600		333° 2600		
*1.5 NM to RW33		GP 3.00° TCH 50				
1.5 NM		3.4 NM		6.1 NM		
CATEGORY	A		B	C	D	E
LPV DA			1195-½ 200 (200-½)			
LNAV/VNAV DA			1552-1½ 557 (600-1½)			
LNAV MDA	1460-½	465 (500-½)	1460-1 465 (500-1)			
CIRCLING	1540-1	525 (600-1)	1560-1½ 545 (600-1½)	1620-2 605 (700-2)	1740-2½ 725 (800-2½)	

FORT CAVAZOS (KILLEEN), TEXAS
Amdt 1D 30NOV23

31°04'N-97°50'W

ROBERT GRAY AAF (GRK)

RNAV (GPS) RWY 33

SC-3, 07 AUG 2025 to 04 SEP 2025

SC-3, 07 AUG 2025 to 04 SEP 2025