

FORT CAVAZOS (KILLEEN), TEXAS

AL-906 (FAA)

23334

WAAS CH 78099 W15A	APP CRS 153°	Rwy Idg 9997 TDZE 1015 Apt Elev 1015
--	------------------------	---

RNAV (GPS) RWY 15

ROBERT GRAY AAF (GRK)

RNP APCH - GPS.

▼

▲

ASR/PAR

For uncompensated Baro-VNAV systems, LNAV/VNAV NA below -17°C or above 54°C. Circling NA west of Rwy 15-33.
For inop ALS, increase LPV Cat E visibility to RVR 4000, LNAV/VNAV all Cats visibility to 1 3⁄8 SM and LNAV Cats C/D/E visibility to 1 3⁄8 SM.
RVR 1800 authorized with the use of FD or AP or HUD to DA.

MALSR

MISSED APPROACH: Climb to 2000 then climbing right turn to 3000 direct AGJ VORTAC and hold.

ATIS 124.9	GRAY APP CON 120.075 323.15	GRAY TOWER 120.75(CTAF) 285.5	GND CON 121.8 279.5	CLNC DEL 126.2 251.1
----------------------	---------------------------------------	---	-------------------------------	--------------------------------

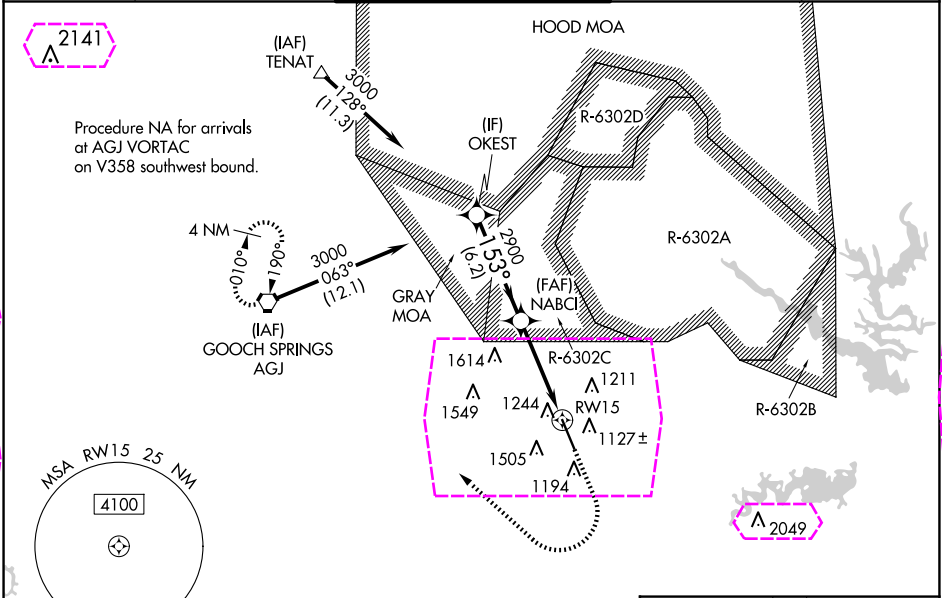


Diagram showing OKEST, NABCI, and RW15 with altitudes and distances. Includes a table for CATEGORY A through E.

CATEGORY	A	B	C	D	E
LPV DA #	1215/24 200 (200-1⁄2)				
LNAV/VNAV DA	1531/55 516 (600-1)				
LNAV MDA	1520/24 505 (600-1⁄2)	1520/55 505 (600-1)			
CIRCLING	1540-1 525 (600-1)	1560-1 1⁄2 545 (600-1 1⁄2)	1620-2 605 (700-2)	1740-2 1⁄2 725 (800-2 1⁄2)	

ELEV 1015 TDZE 1015

Diagram showing TWR 1191 and AGJ VORTAC with altitudes and distances.

FORT CAVAZOS (KILLEEN), TEXAS
Amdt 2B 30NOV23

31°04'N-97°50'W

ROBERT GRAY AAF (GRK)

RNAV (GPS) RWY 15

FORT CAVAZOS (KILLEEN), TEXAS

AL-906 (FAA)

25219

WAAS CH 78099 W15A	APP CRS 153°	Rwy Ldg TDZE Apt Elev	9997 1015 1015
--	------------------------	-----------------------------	---

RNAV (GPS) RWY 15

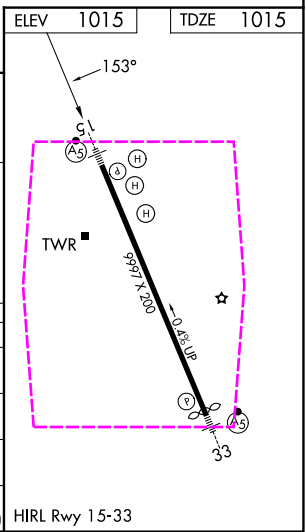
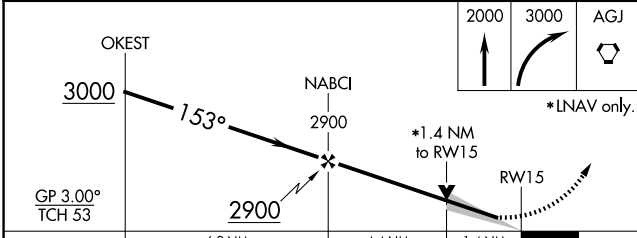
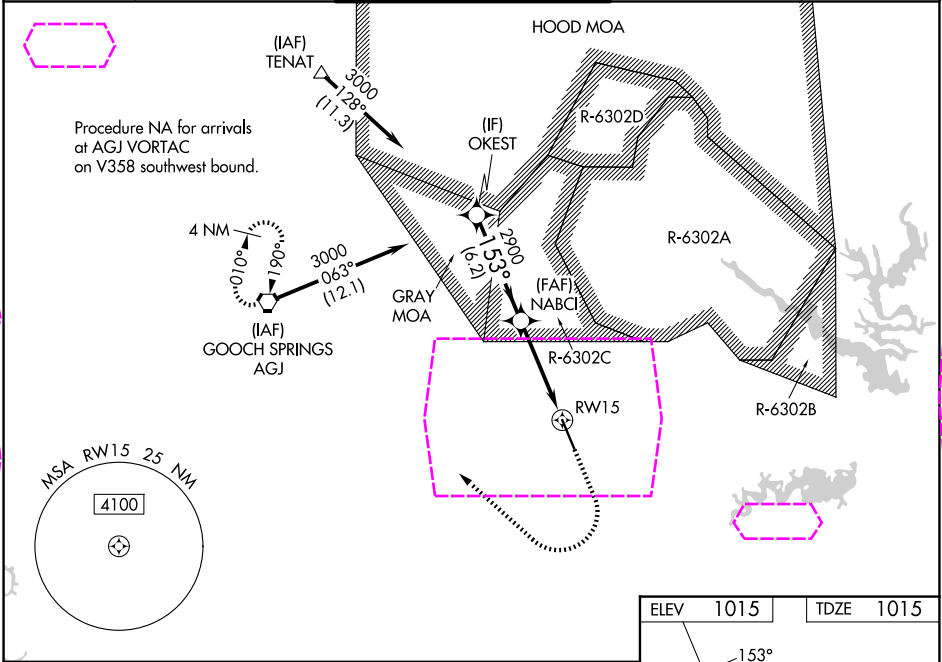
ROBERT GRAY AAF (GRK)

RNP APCH - GPS.

⚠ For uncompensated Baro-VNAV systems, LNAV/VNAV NA below -17°C or above 54°C. Circling NA west of Rwy 15-33.
⚠ For inop ALS, increase LPV Cat E visibility to RVR 4000, LNAV/VNAV all Cats visibility to 1 3/8 SM and LNAV Cats C/D/E visibility to 1 3/8 SM.
RVR 1800 authorized with the use of FD or AP or HUD to DA.

MALSR
AS
MISSED APPROACH: Climb to 2000 then climbing right turn to 3000 direct AGJ VORTAC and hold.

ATIS 124.9	GRAY APP CON 120.075 323.15	GRAY TOWER 120.75(CTAF) 285.5	GND CON 121.8 279.5	CLNC DEL 126.2 251.1
----------------------	---------------------------------------	---	-------------------------------	--------------------------------



CATEGORY	A	B	C	D	E
LPV DA #	1215/24 200 (200-1/2)				
LNAV/VNAV DA	1531/55 516 (600-1)				
LNAV MDA	1520/24	505 (600-1/2)	1520/55	505 (600-1)	
CIRCLING	1540-1	525 (600-1)	1560-1 1/2 545 (600-1 1/2)	1620-2 605 (700-2)	1740-2 1/2 725 (800-2 1/2)

FORT CAVAZOS (KILLEEN), TEXAS
Amdt 2B 30NOV23

31°04'N-97°50'W

RNAV (GPS) RWY 15

ROBERT GRAY AAF (GRK)

SC-3, 07 AUG 2025 to 04 SEP 2025

SC-3, 07 AUG 2025 to 04 SEP 2025