

ILS or LOC RWY 33

MALSR

MISSED APPROACH: Climb to 2000 then climbing left turn to 3000 direct AGJ VORTAC and hold.

T Circling NA west of Rwy 15-33. For inop ALS, increase S-ILS 33
A Cat E visibility to $\frac{3}{4}$ SM and S-LOC 33 Cat C/D/E visibility to 1 SM.
 ASR/PAR

MISSED APCH FIX
 014°
 194°-R-014
 GOOCH SPRINGS
 112.5 AGJ
 Chan 72

A 1614

1549

1244

1505

1043

1194

1211

1127±

LOCALIZER 109.35
I-BTJ
Chan 30(Y)

GRAY
111.8 GRK
Chan 55

RUBUF
I-BTJ 6.7
RADAR

ELEV	1015		TDZE	995
------	------	--	------	-----


CENTEX
112.8 CWK 
Chn 75

Diagram illustrating the TCH 52 approach procedure, showing waypoints, distances, and headings.

Waypoints and I-BTJ values:

- 2000 (I-BTJ 1.8)
- 3000 (I-BTJ 2.9)
- AGJ (I-BTJ 6.7)
- RUBUF (I-BTJ 12.8)
- TIXFO (I-BTJ 17.8)
- GIPGE (I-BTJ 17.8)

Distances (NM):

- 1.1 NM (2000 to 3000)
- 3.8 NM (3000 to RUBUF)
- 6.1 NM (RUBUF to TIXFO)
- 5 NM (TIXFO to GIPGE)

Headings:

- 333° (from 3000 to RUBUF)
- 333° (from RUBUF to TIXFO)
- 333° (from TIXFO to GIPGE)
- GS 3.00° TCH 52 (Final heading)

Legend:

- 2000: Upward arrow
- 3000: Curved arrow
- AGJ: Pentagon symbol

Notes:

- *LOC only.
- *I-BTJ 2.9
- RUBUF I-BTJ 6.7 RADAR
- TIXFO I-BTJ 12.8 RADAR
- GIPGE I-BTJ 17.8 RADAR

CATEGORY	A	B	C	D	E
S-ILS 33	1195-1/2 200 (200-1/2)				
S-LOC 33	1360-1/2 365 (400-1/2)		1360-3/4 365 (400-3/4)		
C CIRCLING	1540-1 525 (600-1)	1560-1 1/2 545 (600-1 1/2)	1620-2 605 (700-2)	1740-2 1/2 725 (800-2 1/2)	

ROBERT GRAY AAF (GRK)
ILS or LOC RWY 33

FORT CAVAZOS (KILLEEN), TEXAS

AL-906 (FAA)

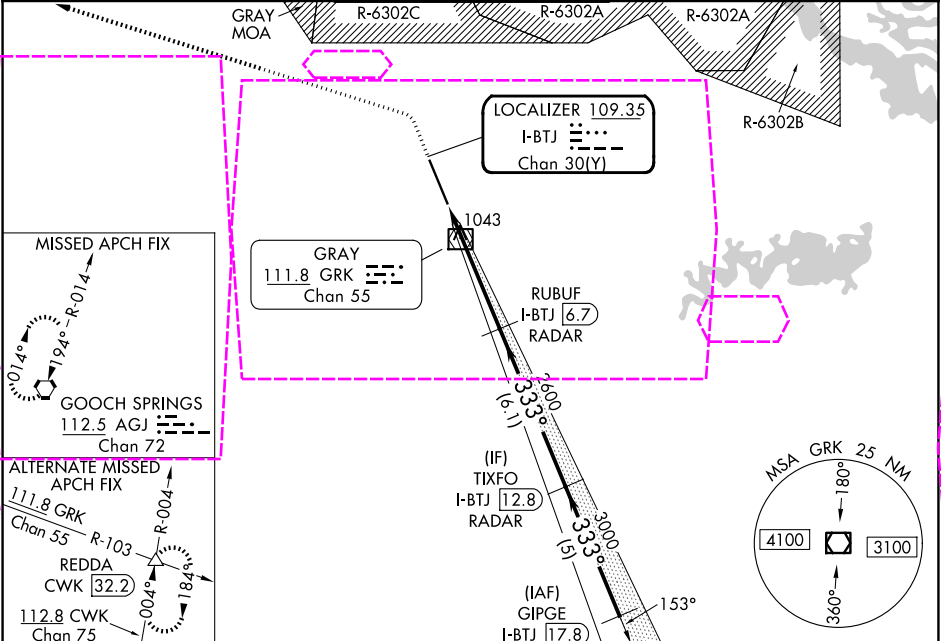
25219

LOC/DME I-BTJ	APP CRS	Rwy Ldg	9803
109.35	333°	TDZE	995
Chan 30 (Y)		Apt Elev	1015

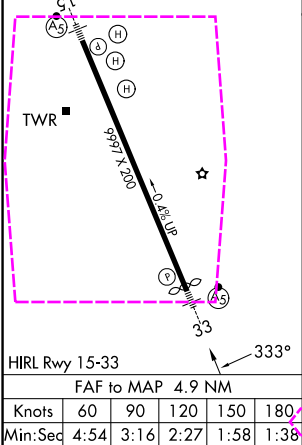
ILS or LOC RWY 33
ROBERT GRAY AAF (GRK)

DME or RADAR required.	MALSR	MISSED APPROACH: Climb to 2000 then climbing left turn to 3000 direct AGJ VORTAC and hold.
ASR/PAR		

ATIS	GRAY APP CON	GRAY TOWER	GND CON	CLNC DEL
124.9	120.075 323.15	120.75 (CTAF) 285.5	121.8 279.5	126.2 251.1



ELEV 1015	TDZE 995
-----------	----------



2000	3000	AGJ			
*LOC only.					
CATEGORY	A	B	C	D	E
S-ILS 33	1195-1/2 200 (200-1/2)				
S-LOC 33	1360-1/2	365 (400-1/2)	1360-3/4	365 (400-3/4)	
CIRCLING	1540-1	525 (600-1)	1560-1 1/2 545 (600-1 1/2)	1620-2 605 (700-2)	1740-2 1/2 725 (800-2 1/2)

FORT CAVAZOS (KILLEEN), TEXAS
Amdt 1E 30NOV23

31°04'N-97°50'W

ROBERT GRAY AAF (GRK)
ILS or LOC RWY 33

SC-3, 07 AUG 2025 to 04 SEP 2025

SC-3, 07 AUG 2025 to 04 SEP 2025