

23334

LOC I-GRK <u>111.1</u>	APP CRS 153°	Rwy Idg TDZE Apt Elev	9997 1015 1015
----------------------------------	------------------------	-----------------------------	---

ILS or LOC RWY 15

ROBERT GRAY AAF (GRK)

T
A

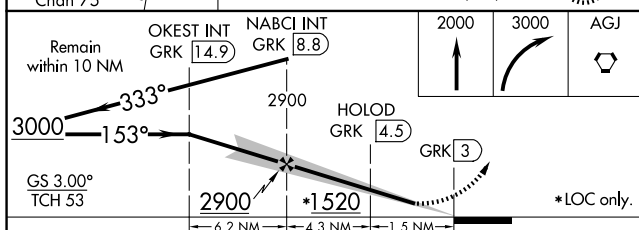
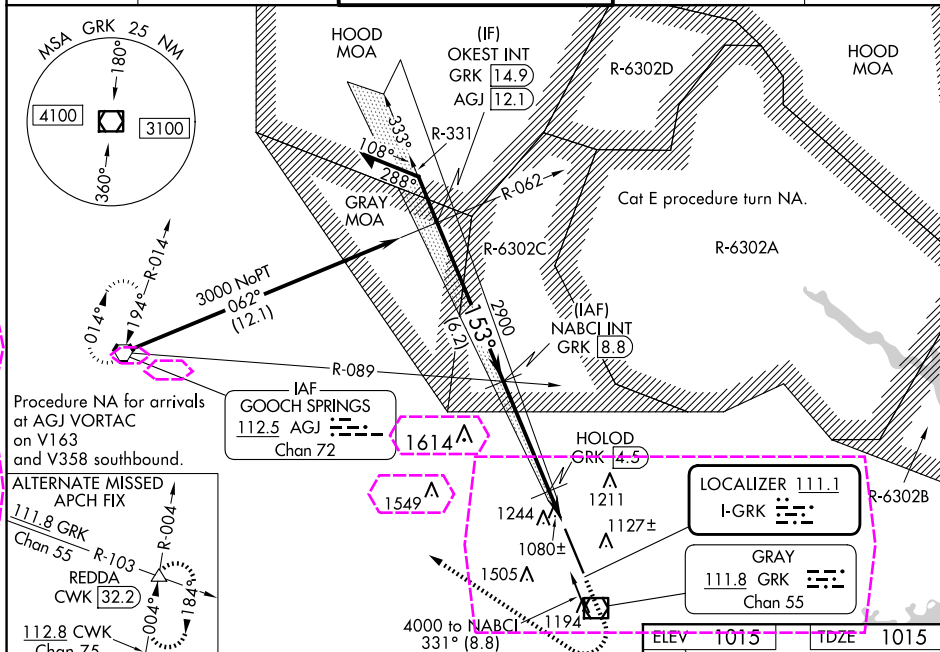
Circling M or V or RWY 15-55 ft of map AEs; increase S-LC Cat E visibility to RVR 4000, S-LOC 15 Cats C/D/E visibility to 1 $\frac{1}{2}$ SM, and HOLOD FIX minimums S-LOC 15 Cats C/D/E visibility to RVR 5500.
DME from GRK VOR/DME. Simultaneous reception of I-GRK and ASR/PAR GRK VOR/DME required.

RVR 1800 authorized with use of FD or AP or HUD to DA.

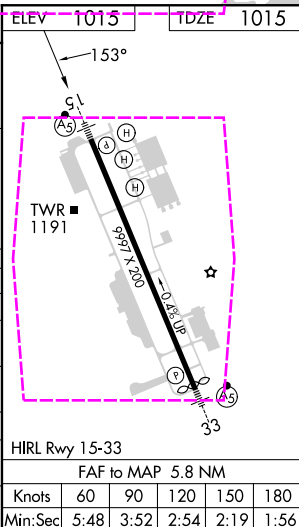


MISSED APPROACH: Climb to 2000 then climbing right turn to 3000 direct AGJ VORTAC and hold.

ATIS 124.9	GRAY APP CON 120.075 323.15	GRAY TOWER 120.75(CTAF) 285.5	GND CON 121.8 279.5	CLNC DEL 126.2 251.1
----------------------	---------------------------------------	---	-------------------------------	--------------------------------



CATEGORY	A	B	C	D	E
S-ILS 15 #	1215/24 200 (200-½)				
S-LOC 15	1520/24 505 (600-½)		1520/55 505 (600-1)		
C CIRCLING	1540-1	525 (600-1)	1560-1½ 545 (600-1½)	1620-2 605 (700-2)	1740-2½ 725 (800-2½)
HOLOD FIX MINIMUMS (DME REQUIRED)					
S-LOC 15	1380/24 365 (400-½)		1380/35 365 (400-¾)		
C CIRCLING	1540-1	525 (600-1)	1560-1½ 545 (600-1½)	1620-2 605 (700-2)	1740-2½ 725 (800-2½)



FORT CAVAZOS (KILLEEN), TEXAS
Amdt 7B 30NOV23

31°04'N-97°50'W

ROBERT GRAY AAF (GRK)
ILS or LOC RWY 15

25219

LOC I-GRK <u>111.1</u>	APP CRS 153°	Rwy Ldg TDZE Apt Elev	9997 1015 1015
----------------------------------	------------------------	-----------------------------	---

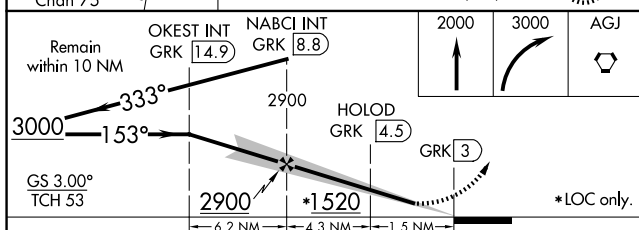
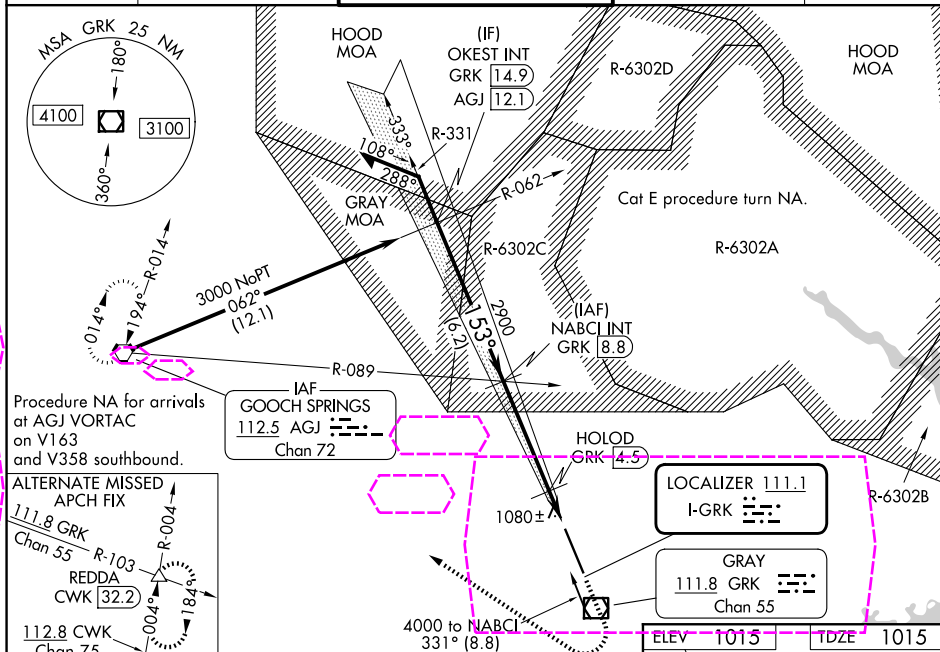
ILS or LOC RWY 15
ROBERT GRAY AAF (GRK)

T Circling RWY or RWY 15-35.1 of map A25, increase S-LOC E visibility to RVR 4000, S-LOC 15 Cats C/D/E visibility to 1 $\frac{1}{2}$ SM, and HOLOD FIX minimums S-LOC 15 Cats C/D/E visibility to RVR 5500.
A DME from GRK VOR/DME. Simultaneous reception of I-GRK and GRK VOR/DME required.
 # RVR 1800 authorized with use of FD or AP or HUD to DA.

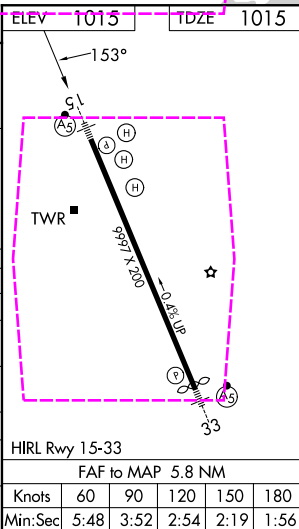


MISSED APPROACH: Climb to 2000 then climbing right turn to 3000 direct AGJ VORTAC and hold.

ATIS 124.9	GRAY APP CON 120.075 323.15	GRAY TOWER 120.75(CTAF) 285.5	GND CON 121.8 279.5	CLNC DEL 126.2 251.1
----------------------	---------------------------------------	---	-------------------------------	--------------------------------



CATEGORY	A	B	C	D	E
S-ILS 15 #	1215/24 200 (200-½)				
S-LOC 15	1520/24 505 (600-½)		1520/55 505 (600-1)		
CIRCLING	1540-1	525 (600-1)	1560-1½ 545 (600-1½)	1620-2 605 (700-2)	1740-2½ 725 (800-2½)
HOLOD FIX MINIMUMS (DME REQUIRED)					
S-LOC 15	1380/24 365 (400-½)		1380/35 365 (400-¾)		
CIRCLING	1540-1	525 (600-1)	1560-1½ 545 (600-1½)	1620-2 605 (700-2)	1740-2½ 725 (800-2½)



FORT CAVAZOS (KILLEEN), TEXAS
Amdt 7B 30NOV23

31°04'N-97°50'W

ROBERT GRAY AAF (GRK)
ILS or LOC RWY 15

SC-3, 07 AUG 2025 to 04 SEP 2025

SC-3, 07 AUG 2025 to 04 SEP 2025