

FORT CAVAZOS (KILLEEN), TEXAS

AL-906 (FAA)

23334

VOR/DME GRK	APP CRS	Rwy Idg	9803
111.8	333°	TDZE	N/A
Chan 55		Apt Elev	1015

COPTER VOR RWY 33

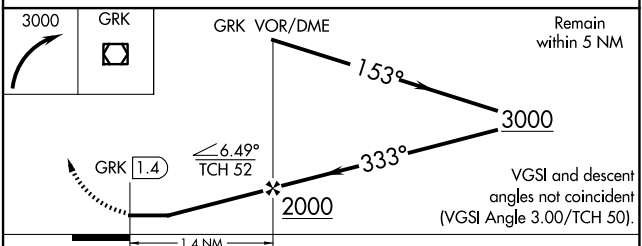
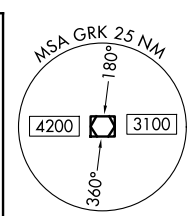
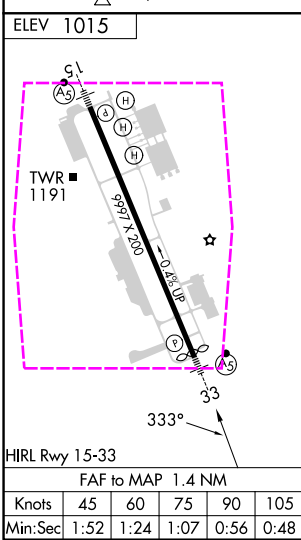
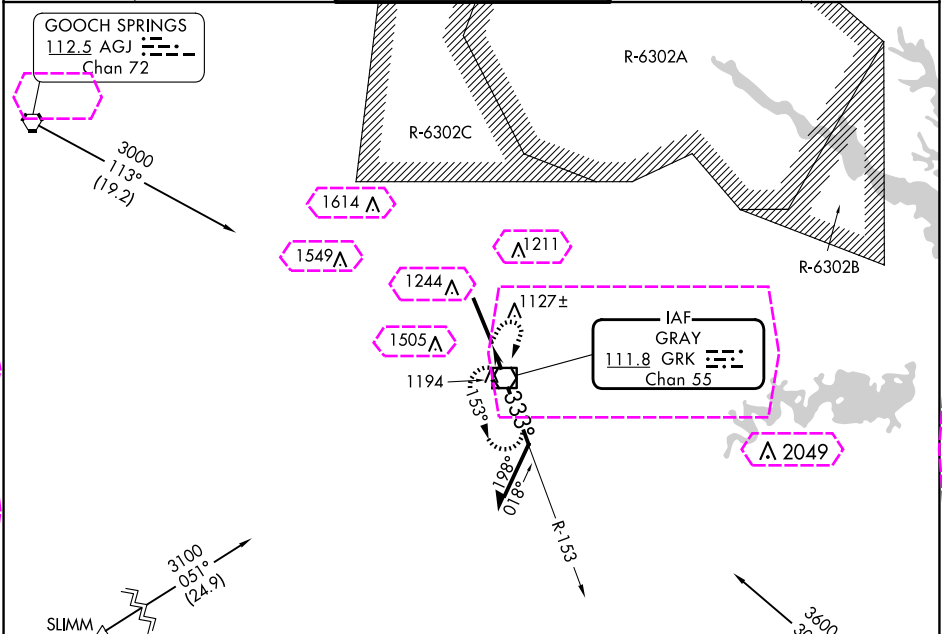
ROBERT GRAY AAF (GRK)

NA
ASR/PAR

MALSR

MISSED APPROACH: Climbing right turn to 3000 direct GRK VOR/DME and hold.

ATIS 124.9	GRAY APP CON 120.075 323.15	GRAY TOWER 120.75(CTAF) 285.5	GND CON 121.8 279.5	CLNC DEL 126.2 251.1
---------------	--------------------------------	----------------------------------	------------------------	-------------------------



FAF to MAP 1.4 NM					CATEGORY	COPTER
Knots	45	60	75	90	105	
Min:Sec	1:52	1:24	1:07	0:56	0:48	
H-33					1460-¼ 465 (500-¼)	

FORT CAVAZOS (KILLEEN), TEXAS
Amdt 2C 30NOV23

31°04'N-97°50'W

ROBERT GRAY AAF (GRK) COPTER VOR RWY 33

SC-3, 10 JUL 2025 to 07 AUG 2025

SC-3, 10 JUL 2025 to 07 AUG 2025

FORT CAVAZOS (KILLEEN), TEXAS

AL-906 (FAA)

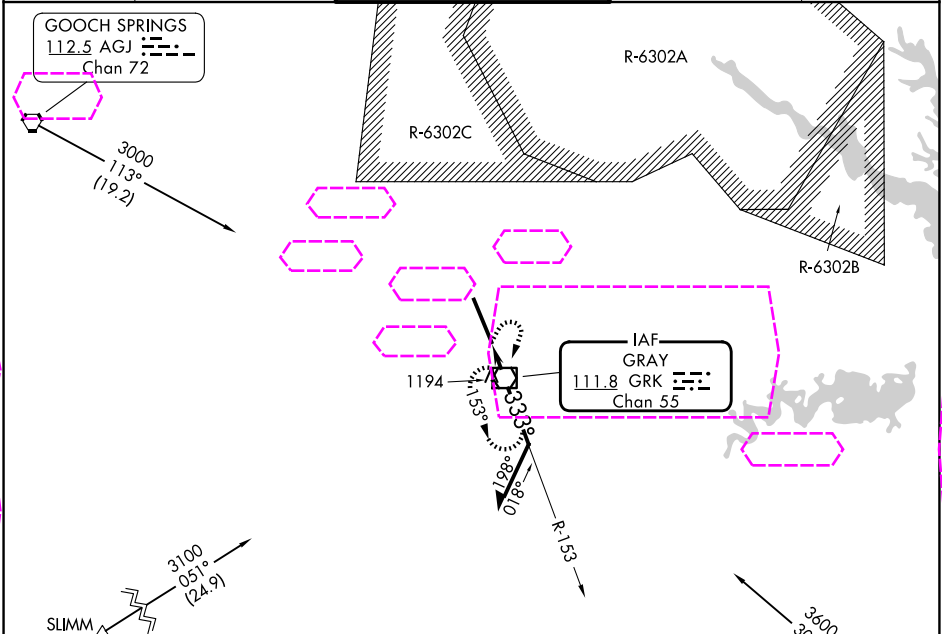
25219

VOR/DME GRK	APP CRS	Rwy Ldg	9803
111.8	333°	TDZE	N/A
Chan 55		Apt Elev	1015

COPTER VOR RWY 33
ROBERT GRAY AAF (GRK)

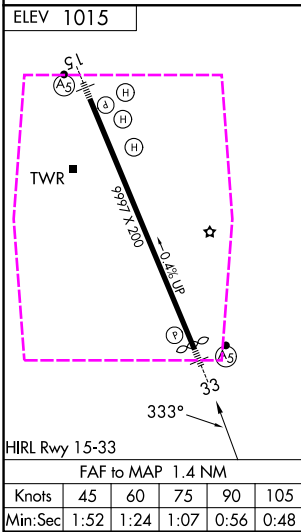
NA ASR/PAR	MALSR	MISSED APPROACH: Climbing right turn to 3000 direct GRK VOR/DME and hold.
---------------	-------	---

ATIS 124.9	GRAY APP CON 120.075 323.15	GRAY TOWER 120.75 (CTAF) 285.5	GND CON 121.8 279.5	CLNC DEL 126.2 251.1
---------------	--------------------------------	-----------------------------------	------------------------	-------------------------



SC-3, 07 AUG 2025 to 04 SEP 2025

SC-3, 07 AUG 2025 to 04 SEP 2025



FORT CAVAZOS (KILLEEN), TEXAS
Amdt 2C 30NOV23

31°04'N-97°50'W

ROBERT GRAY AAF (GRK)
COPTER VOR RWY 33