

HOT SPRINGS, ARKANSAS

AL-902 (FAA)

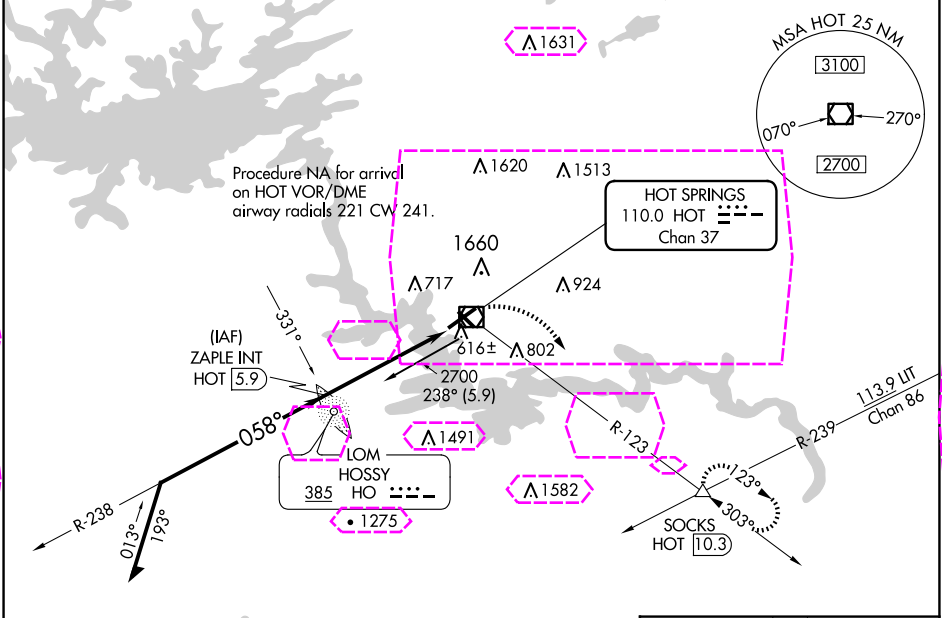
22139

VOR/DME HOT	APP CRS	Rwy Idg
110.0	058°	6595
Chan 37		TDZE 516
		Apt Elev 540

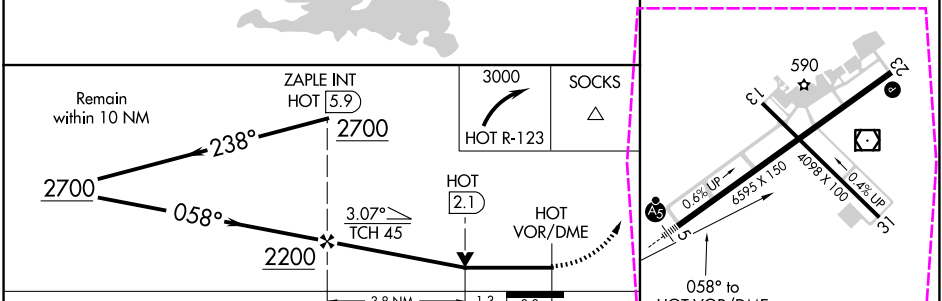
VOR RWY 5
MEML FLD (HOT)

ADF or DME required for procedure entry. ADF or DME required.	MALSR	MISSED APPROACH: Climbing right turn to 3000 on HOT R-123 to SOCKS INT/HOT 10.3 DME and hold.
Circling NA northwest of Rwys 5 and 23. Circling Rwy 31 NA at night.		

ASOS 119.925	MEMPHIS CENTER 128.475 377.15	UNICOM 123.0 (CTAF)
-----------------	----------------------------------	------------------------



ELEV 540	TDZE 516
----------	----------



CATEGORY	A	B	C	D
S-5	960-1/2 444 (500-1/2)		960-7/8 444 (500-7/8)	
CIRCLING	1080-1 540 (600-1)		1380-2 1/2 840 (900-2 1/2)	1620-3 1080 (1100-3)

HIRL Rwy 5-23

MIRL Rwy 13-31

REIL Rwy 13

HOT SPRINGS, ARKANSAS
Amdt 5 15AUG19

34°29'N-93°06'W

MEML FLD (HOT)
VOR RWY 5

SC-1, 10 JUL 2025 to 07 AUG 2025

SC-1, 10 JUL 2025 to 07 AUG 2025

HOT SPRINGS, ARKANSAS

AL-902 (FAA)

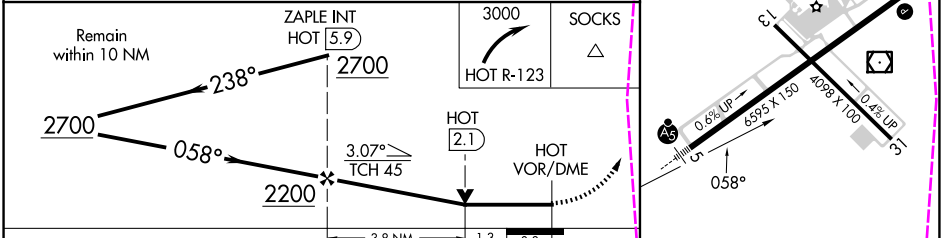
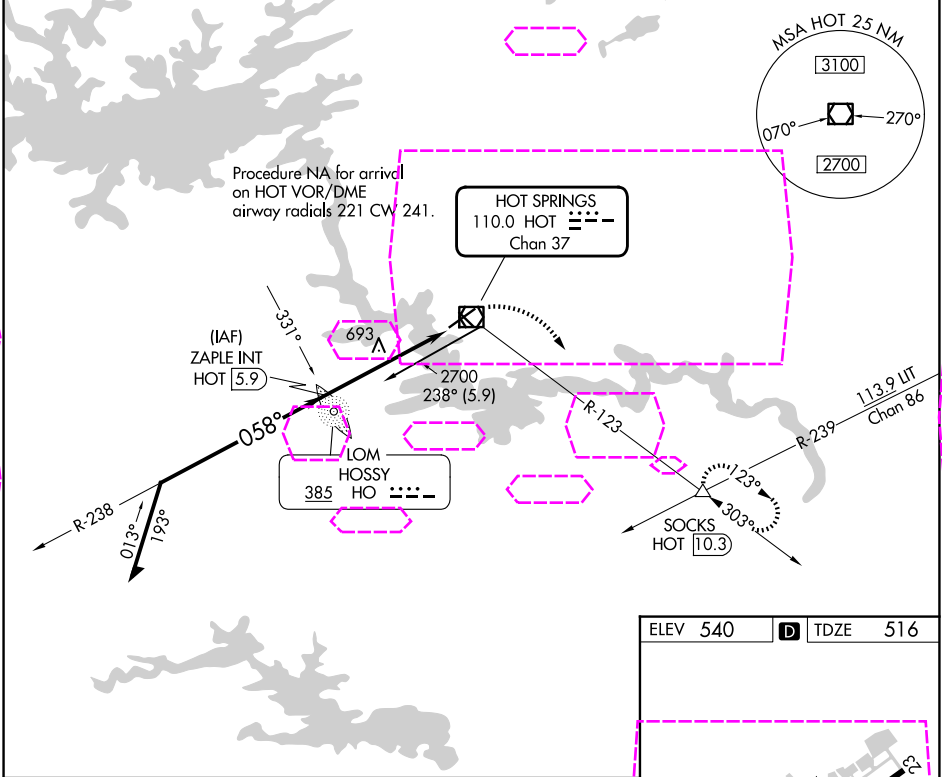
25219

VOR/DME HOT	APP CRS	Rwy Ldg
110.0	058°	6595
Chan 37		TDZE 516
		Apt Elev 540

VOR RWY 5
MEML FLD (HOT)

ADF or DME required for procedure entry. ADF or DME required.	MALSR	MISSED APPROACH: Climbing right turn to 3000 on HOT R-123 to SOCKS INT/HOT 10.3 DME and hold.
Circling NA northwest of Rwys 5 and 23. Circling Rwy 31 NA at night.		

ASOS 119.925	MEMPHIS CENTER 128.475 377.15	UNICOM 123.0 (CTAF)
-----------------	----------------------------------	------------------------



CATEGORY	A	B	C	D
S-5	960-1/2 444 (500-1/2)		960-7/8 444 (500-7/8)	
CIRCLING	1080-1 540 (600-1)		1380-2 1/2 840 (900-2 1/2)	1620-3 1080 (1100-3)

ELEV 540		TDZE 516
----------	--	----------

HIRL Rwy 5-23

MIRL Rwy 13-31

REIL Rwy 13

HOT SPRINGS, ARKANSAS
Amdt 5 15AUG19

34°29'N-93°06'W

MEML FLD (HOT)
VOR RWY 5

SC-1, 07 AUG 2025 to 04 SEP 2025

SC-1, 07 AUG 2025 to 04 SEP 2025