

HOT SPRINGS, ARKANSAS

AL-902 (FAA)

22139

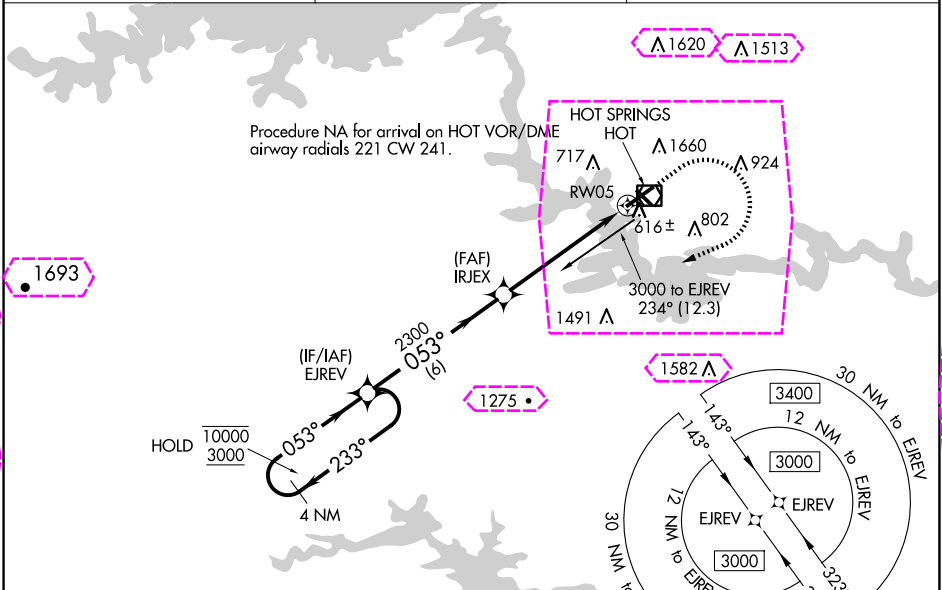
WAAS CH 86343 W05A	APP CRS 053°	Rwy Idg 6595 TDZE 516 Apt Elev 540
--	------------------------	---

RNAV (GPS) RWY 5

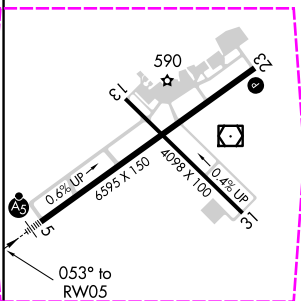
MEML FLD (HOT)

RNP APCH.		MALSR 	MISSED APPROACH: Climb to 1300 then climbing right turn 3000 direct EJREV and hold.
NA For inop ALS, increase all Cats visibility to 1 3/8 SM.			

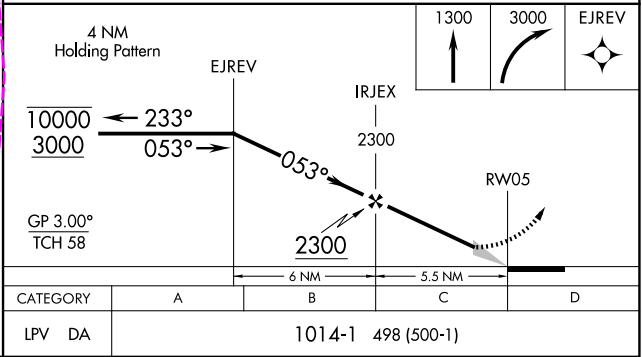
ASOS 119.925	MEMPHIS CENTER 128.475 377.15	UNICOM 123.0 (CTAF)
------------------------	---	-------------------------------



ELEV 540		TDZE 516
-----------------	--	-----------------



- HIRL Rwy 5-23
- MIRL Rwy 13-31
- REIL Rwy 13



HOT SPRINGS, ARKANSAS
Amdt 2A 30JAN20

34°29'N-93°06'W

RNAV (GPS) RWY 5

MEML FLD (HOT)

SC-1, 10 JUL 2025 to 07 AUG 2025

SC-1, 10 JUL 2025 to 07 AUG 2025

HOT SPRINGS, ARKANSAS

AL-902 (FAA)

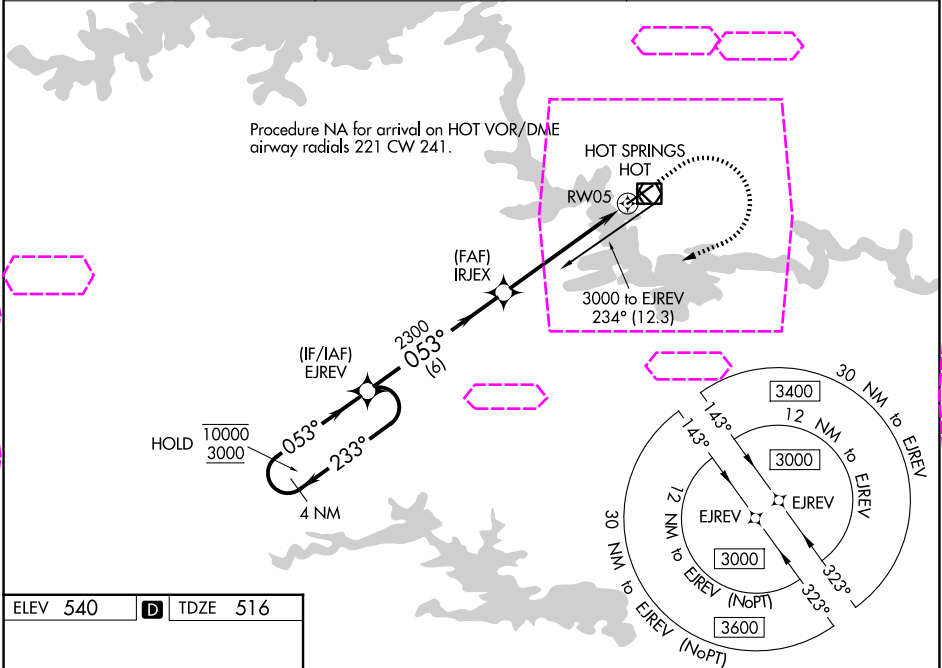
25219

WAAS CH 86343 W05A	APP CRS 053°	Rwy Ldg 6595 TDZE 516 Apt Elev 540
--	------------------------	---

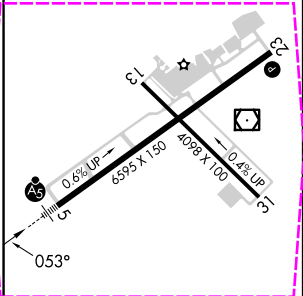
RNAV (GPS) RWY 5
MEML FLD (HOT)

RNP APCH. NA For inop ALS, increase all Cats visibility to 1 3/8 SM.	MALSR AS	MISSED APPROACH: Climb to 1300 then climbing right turn 3000 direct EJREV and hold.
---	-------------	---

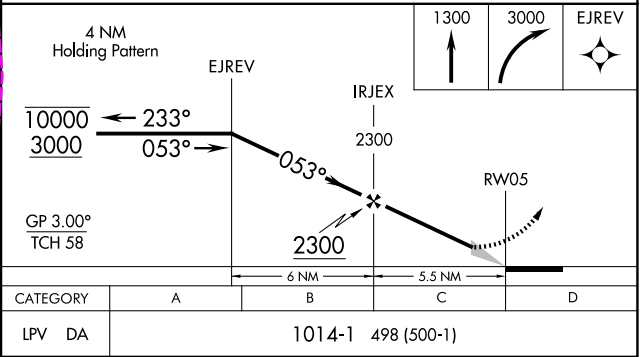
ASOS 119.925	MEMPHIS CENTER 128.475 377.15	UNICOM 123.0 (CTAF) 1
------------------------	---	--



ELEV 540	D	TDZE 516
----------	---	----------



- HIRL Rwy 5-23 **1**
- MIRL Rwy 13-31 **1**
- REIL Rwy 13 **1**



HOT SPRINGS, ARKANSAS
Amdt 2A 30JAN20

34°29'N-93°06'W

MEML FLD (HOT)
RNAV (GPS) RWY 5

SC-1, 07 AUG 2025 to 04 SEP 2025

SC-1, 07 AUG 2025 to 04 SEP 2025