

HOT SPRINGS, ARKANSAS

AL-902 (FAA)

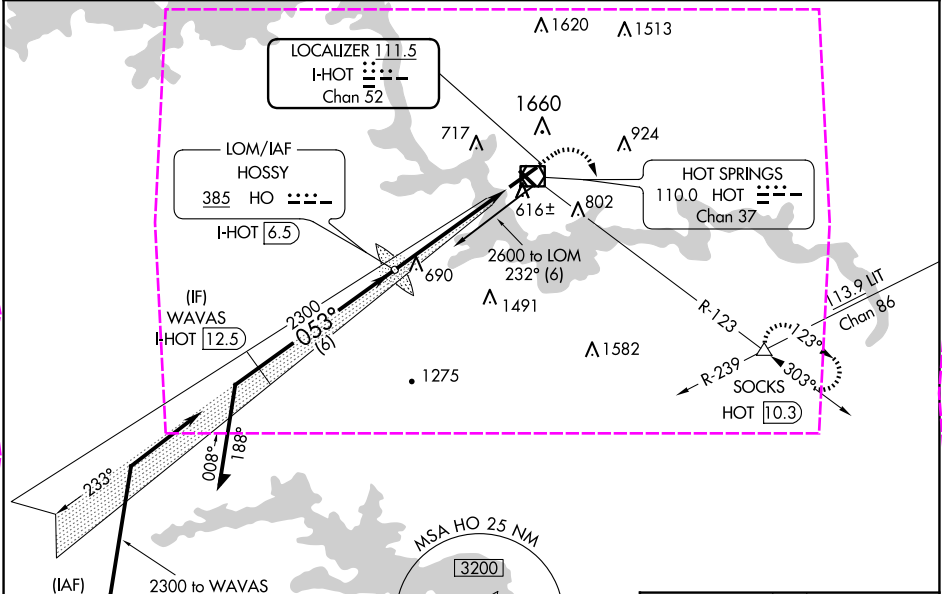
22139

LOC/DME I-HOT 111.5 Chan 52	APP CRS 053°	Rwy Idg 6595 TDZE 516 Apt Elev 540
---	------------------------	---

ILS or LOC RWY 5
MEML FLD (HOT)

ADF or DME required.	MALSR AS	MISSED APPROACH: Climb to 1000 then climbing right turn to 3000 on HOT VOR/DME R-123 to SOCKS INT/HOT 10.3 DME and hold.
NA Circling NA northwest of Rwy 5-23. Use I-HOT DME when on localizer course.		

ASOS 119.925	MEMPHIS CENTER 128.475 377.15	UNICOM 123.0 (CTAF)
------------------------	---	-------------------------------



MARKI \triangle 008° (4.9)
HOT 21.4 and 053° (12.5)

Remain within 10 NM

HOSSY LOM
I-HOT 6.5

2500

233°

2300

053°

GS 3.00°
TCH 57

2300

4 NM

1.1

*I-HOT 2.5

I-HOT 1.4

2600

1000

3000

SOCKS

HOT
R-123

\triangle

*LOC only.

053° 5.1 NM
from FAF

HIRL Rwy 5-23 **1**

MIRL Rwy 13-31 **1**

REIL Rwy 13 **1**

FAF to MAP 5.1 NM					
Knots	60	90	120	150	180
Min:Sec	5:06	3:24	2:33	2:02	1:42

CATEGORY	A	B	C	D
S-ILS 5	732- $\frac{1}{2}$ 216 (200- $\frac{1}{2}$)			
S-LOC 5	940- $\frac{1}{2}$	424 (400- $\frac{1}{2}$)	940- $\frac{3}{4}$	424 (400- $\frac{3}{4}$)
C CIRCLING	1080-1	540 (600-1)	1380-2 $\frac{1}{2}$ 840 (900-2 $\frac{1}{2}$)	1620-3 1080 (1100-3)

HOT SPRINGS, ARKANSAS
Amdt 16 15AUG19

34°29'N-93°06'W

MEML FLD (HOT)
ILS or LOC RWY 5

SC-1, 10 JUL 2025 to 07 AUG 2025

SC-1, 10 JUL 2025 to 07 AUG 2025

HOT SPRINGS, ARKANSAS

AL-902 (FAA)

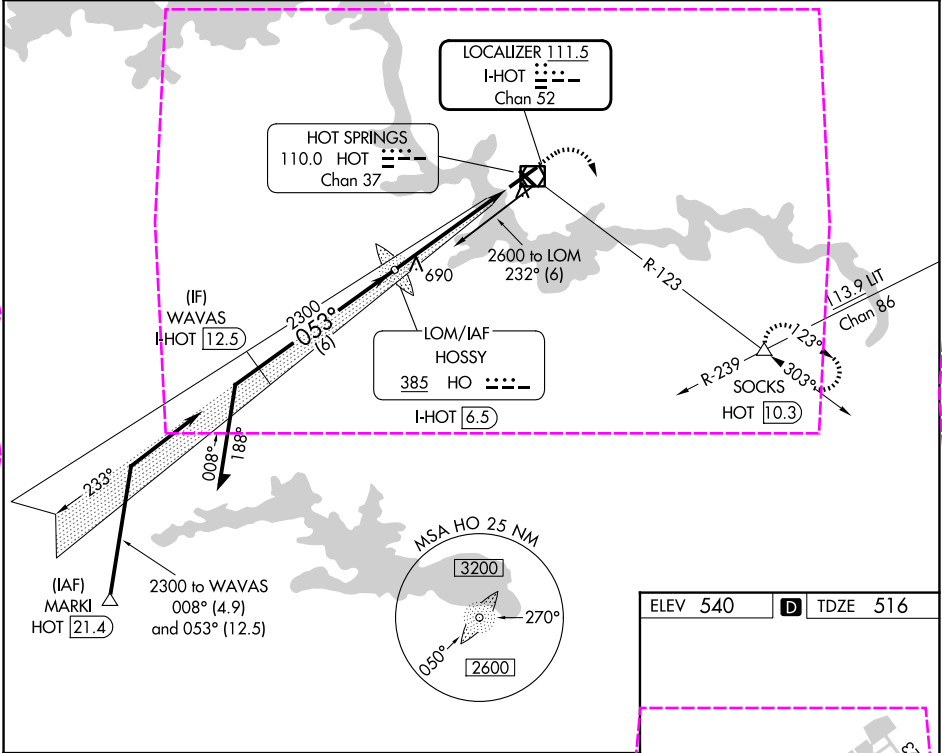
25219

LOC/DME I-HOT 111.5 Chan 52	APP CRS 053°	Rwy Ldg TDZE 516 Apt Elev 540
---	------------------------	---

ILS or LOC RWY 5
MEML FLD (HOT)

ADF or DME required. NA Circling NA northwest of Rwy 5-23. Use I-HOT DME when on localizer course.	MALSR 	MISSED APPROACH: Climb to 1000 then climbing right turn to 3000 on HOT VOR/DME R-123 to SOCKS INT/HOT 10.3 DME and hold.
---	-----------	--

ASOS 119.925	MEMPHIS CENTER 128.475 377.15	UNICOM 123.0 (CTAF)
------------------------	---	-------------------------------



CATEGORY	Remain within 10 NM			
	HOSSY LOM I-HOT 6.5			
	2500 233° 2300 053° 2300			
	GS 3.00° TCH 57			
	4 NM 1.1			
S-ILS 5	732-1/2 216 (200-1/2)			
S-LOC 5	940-1/2 424 (400-1/2) 940-3/4 424 (400-3/4)			
CIRCLING	1080-1 540 (600-1) 1380-2 1/2 840 (900-2 1/2) 1620-3 1080 (1100-3)			

ELEV 540	TDZE 516
HRL Rwy 5-23 MRL Rwy 13-31 REIL Rwy 13	
FAF to MAP 5.1 NM	
Knots	60 90 120 150 180
Min:Sec	5:06 3:24 2:33 2:02 1:42

HOT SPRINGS, ARKANSAS
Amdt 16 15AUG19

34°29'N-93°06'W

MEML FLD (HOT)
ILS or LOC RWY 5

SC-1, 07 AUG 2025 to 04 SEP 2025

SC-1, 07 AUG 2025 to 04 SEP 2025