



GADSDEN, ALABAMA

AL-897 (FAA)

25219

VOR/DME GAD	APP CRS	Rwy Ldg	6802
112.3	052°	TDZE	569
Chan 70		Apt Elev	569

VOR RWY 6

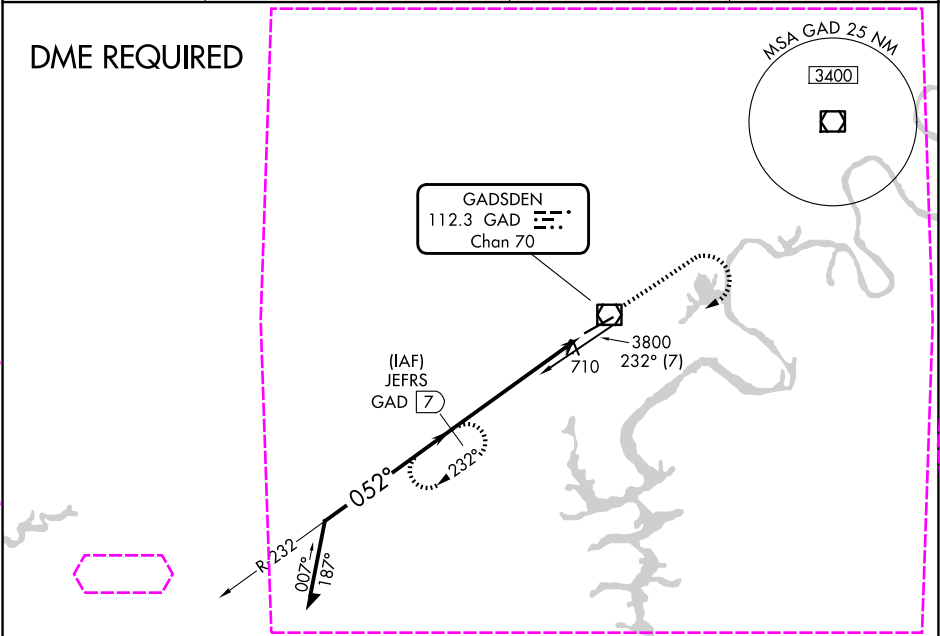
NORTHEAST ALABAMA RGNL (GAD)

**⚠** When local altimeter setting not received, use Anniston altimeter setting and increase all MDAs 80 feet; increase S-6 Cat C/D visibility ¼ mile and Circling Cat C ½ SM. VDP NA when using Anniston altimeter setting. DME required.

**MISSED APPROACH:** Climb to 2000 then climbing right turn to 3500 on GAD VOR/DME R-232 to JEFRS/7 DME and hold.

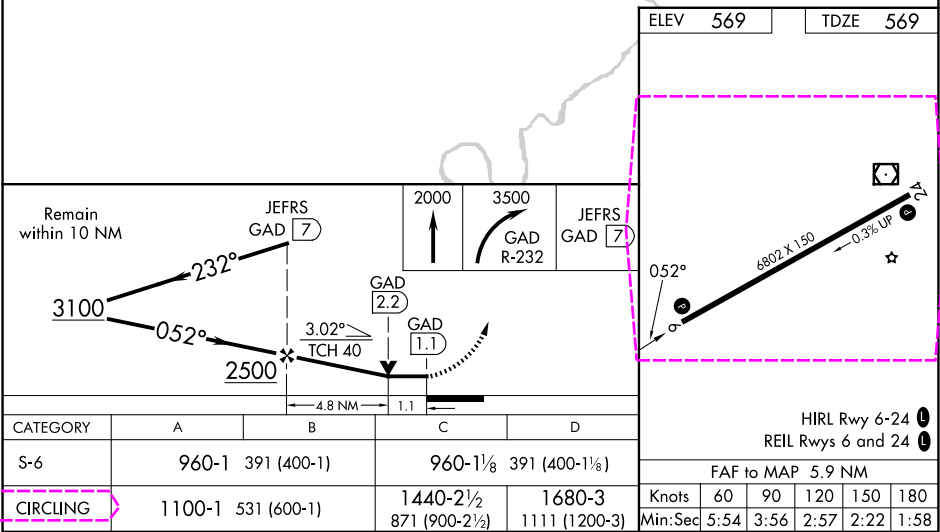
AWOS-3PT	BIRMINGHAM APP CON	CLNC DEL	UNICOM
127.825	125.45 279.65	120.05 257.7	122.725 (CTAF) 0

DME REQUIRED



SE-4, 07 AUG 2025 to 04 SEP 2025

SE-4, 07 AUG 2025 to 04 SEP 2025



GADSDEN, ALABAMA				NORTHEAST ALABAMA RGNL (GAD)			
Amdt 14 17AUG17				33°58'N-86°05'W			
VOR RWY 6				VOR RWY 6			