

GADSDEN, ALABAMA

AL-897 (FAA)

25163

WAAS CH 65706 W06A	APP CRS 064°	Rwy Ldg TDZE 569 Apt Elev 569
--	------------------------	---

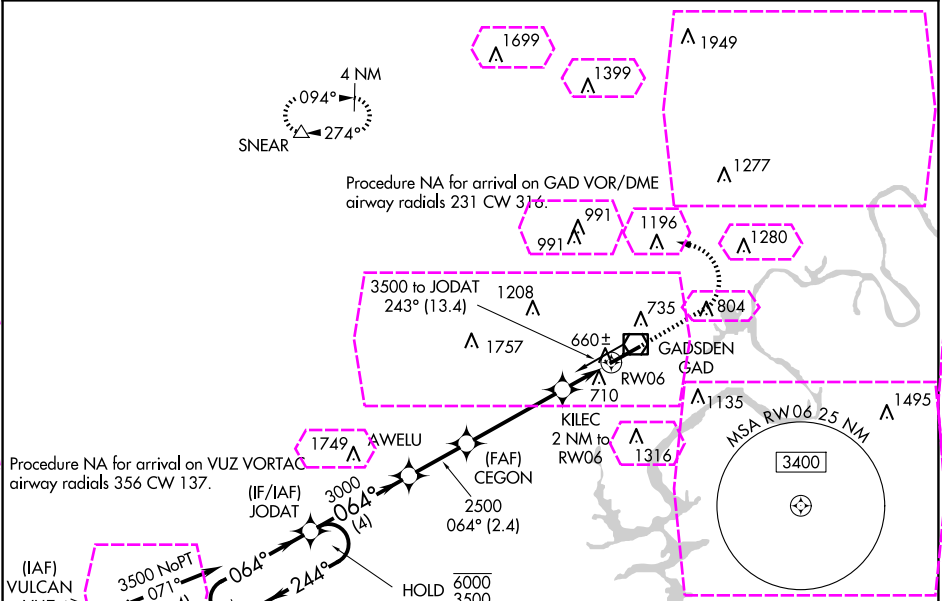
RNAV (GPS) RWY 6
NORTHEAST ALABAMA RGNL (GAD)

RNP APCH-GPS.

⚠ Baro-VNAV and VDP NA when using Anniston altimeter setting. For uncompensated Baro-VNAV systems, LNAV/VNAV NA below -16°C or above 54°C. When local altimeter not received, use Anniston altimeter setting and increase LPV DA to 835, LNAV/VNAV DA to 1040 and all MDA 80 feet; increase LPV all Cats visibility 1/8 SM, LNAV/VNAV all Cats 1/4 SM and increase LNAV Cats C/D and Circling Cat C visibility 1/4 SM.

MISSED APPROACH: Climb to 1300 then climbing left turn to 3500 direct SNEAR and hold.

AWOS-3PT 127.825	BIRMINGHAM APP CON 125.45 279.65	CLNC DEL 120.05 257.7	UNICOM 122.725 (CTAF) 0
----------------------------	--	---------------------------------	-----------------------------------



4 NM Holding Pattern		JODAT	AWELU	CEGON	KILEC 2 NM to RW06	1.1 NM to RW06	SNEAR
6000 ← 244° 3500 → 064°		064°	3000	2500	1240	1300 3500	△
GP 3.00° TCH 40		4 NM	2.4 NM	3.9 NM	0.9 NM	1.1 NM	
CATEGORY	A	B	C	D			
LPV DA		769-3/4	200 (200-3/4)				
LNAV/VNAV DA		960-1 1/8	391 (400-1 1/8)				
LNAV MDA	960-1	391 (400-1)	960-1 1/8	391 (400-1 1/8)			
CIRCLING	1100-1	531 (600-1)	1440-2 1/2 871 (900-2 1/2)	1680-3 1111 (1200-3)			

ELEV 569 TDZE 569

HIRL Rwy 6-24 0
REIL Rwy 6 and 24 0

GADSDEN, ALABAMA
Amdt 1D 17JUN21

33°58'N-86°05'W

NORTHEAST ALABAMA RGNL (GAD)
RNAV (GPS) RWY 6

GADSDEN, ALABAMA

AL-897 (FAA)

25219

WAAS CH 65706 W06A	APP CRS 064°	Rwy Ldg TDZE 569 Apt Elev 569
--	------------------------	---

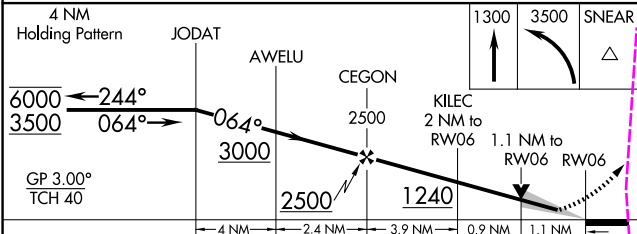
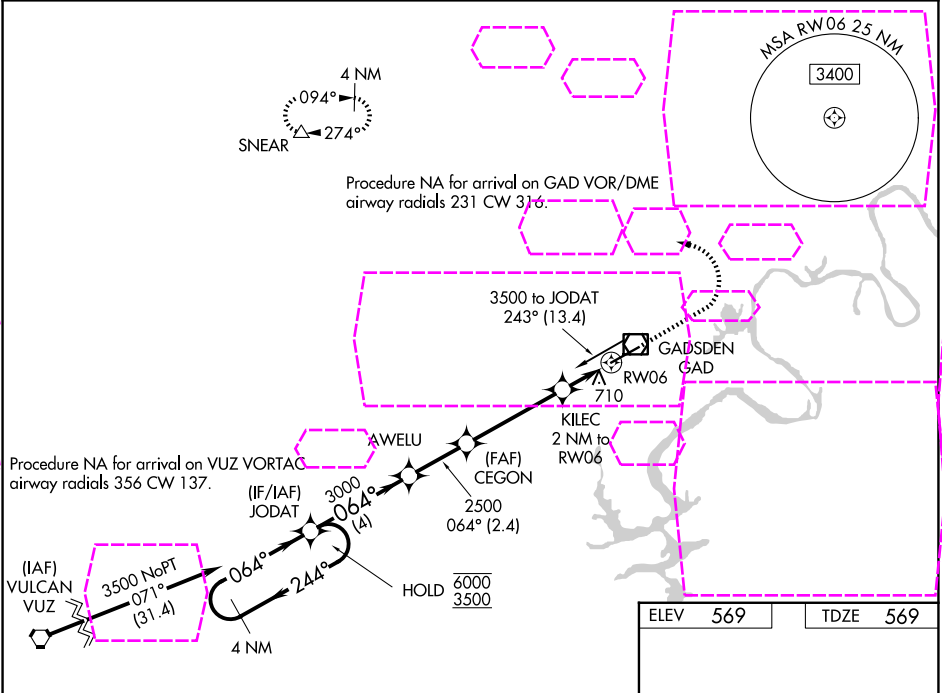
RNAV (GPS) RWY 6
NORTHEAST ALABAMA RGNL (GAD)

RNP APCH-GPS.

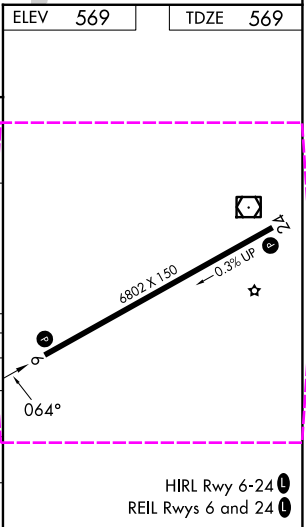
⚠ Baro-VNAV and VDP NA when using Anniston altimeter setting. For uncompensated Baro-VNAV systems, LNAV/VNAV NA below -16°C or above 54°C. When local altimeter not received, use Anniston altimeter setting and increase LPV DA to 835, LNAV/VNAV DA to 1040 and all MDA 80 feet; increase LPV all Cats visibility 1/8 SM, LNAV/VNAV all Cats 1/4 SM and increase LNAV Cats C/D and Circling Cat C visibility 1/4 SM.

MISSED APPROACH: Climb to 1300 then climbing left turn to 3500 direct SNEAR and hold.

AWOS-3PT 127.825	BIRMINGHAM APP CON 125.45 279.65	CLNC DEL 120.05 257.7	UNICOM 122.725 (CTAF) 0
----------------------------	--	---------------------------------	-----------------------------------



CATEGORY	A	B	C	D
LPV DA		769-3/4	200 (200-3/4)	
LNAV/VNAV DA		960-1 1/8	391 (400-1 1/8)	
LNAV MDA	960-1	391 (400-1)	960-1 1/8	391 (400-1 1/8)
CIRCLING	1100-1	531 (600-1)	1440-2 1/2 871 (900-2 1/2)	1680-3 1111 (1200-3)



GADSDEN, ALABAMA
Amdt 1D 17JUN21

33°58'N-86°05'W

RNAV (GPS) RWY 6
NORTHEAST ALABAMA RGNL (GAD)

SE-4, 07 AUG 2025 to 04 SEP 2025

SE-4, 07 AUG 2025 to 04 SEP 2025