

GADSDEN, ALABAMA

AL-897 (FAA)

25163

WAAS CH 65905 W24A	APP CRS 244°	Rwy Ldg TDZE 560 Apt Elev 569
--	------------------------	---

RNAV (GPS) RWY 24

NORTHEAST ALABAMA RGNL (GAD)

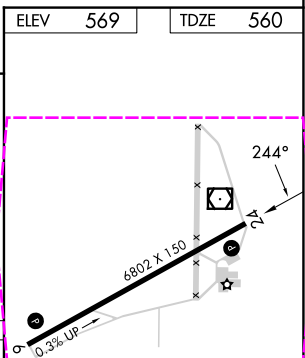
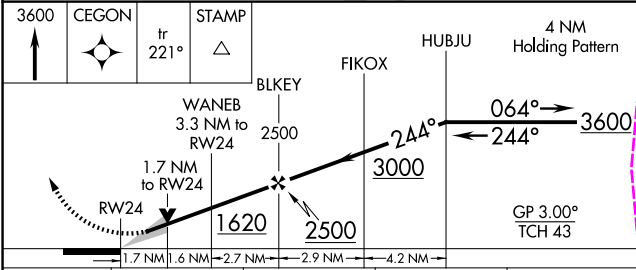
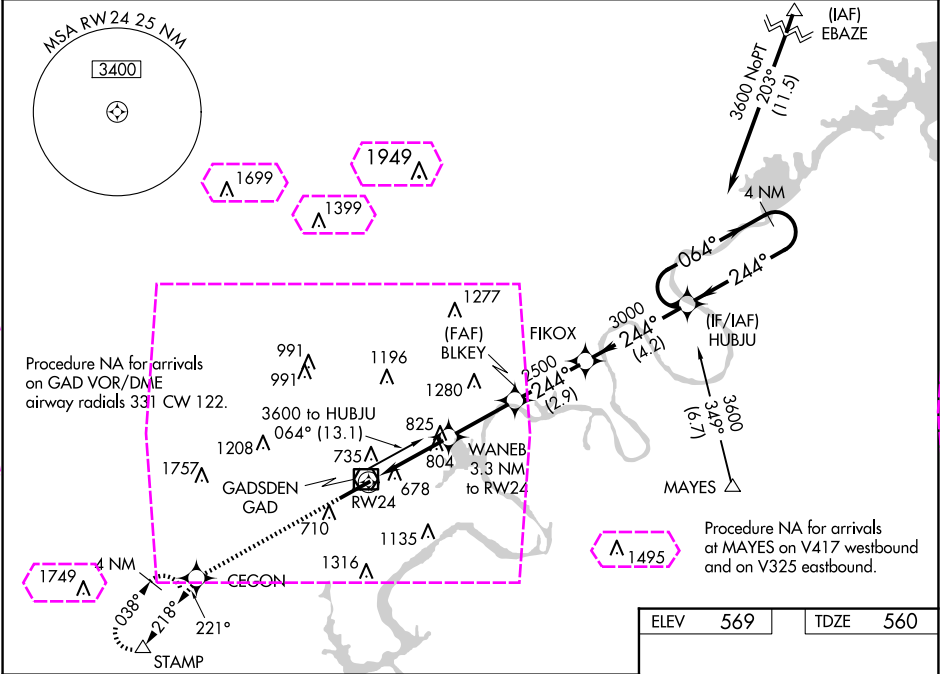
RNP APCH-GPS.

▼ For uncompensated Baro-VNAV systems, LNAV/VNAV NA below -16°C or above 54°C.

▲ When local altimeter setting is not received, use Aniston altimeter setting and increase LPV DA to 847 feet and all visibilities $\frac{1}{8}$ SM; increase LNAV/VNAV DA to 1082 feet and all visibilities $\frac{1}{8}$ SM; increase all MDAs 80 feet and LNAV visibility Cat C/D $\frac{1}{4}$ SM, and Circling visibility Cat C $\frac{1}{2}$ SM. Baro-VNAV and VDP NA when using Aniston altimeter setting.

MISSED APPROACH: Climb to 3600 direct CEGON and on track 221° to STAMP and hold, continue climb-in-hold to 3600.

AWOS-3PT 127.825	BIRMINGHAM APP CON 125.45 279.65	CLNC DEL 120.05 257.7	UNICOM 122.725 (CTAF) 0
----------------------------	--	---------------------------------	-----------------------------------



CATEGORY	A	B	C	D
LPV DA		781-3/4	221 (300-3/4)	
LNAV/VNAV		1016-13/8	456 (500-13/8)	
LNAV MDA	1140-1	580 (600-1)	1140-15/8	580 (600-13/8)
CIRCLING	1140-1	571 (600-1)	1440-2 1/2 871 (900-2 1/2)	1680-3 1111 (1200-3)

GADSDEN, ALABAMA
Amdt 1D 07SEP23

33°58'N-86°05'W

NORTHEAST ALABAMA RGNL (GAD)
RNAV (GPS) RWY 24

HIRL Rwy 6-24
REIL Rwy 6 and 24

SE-4, 10 JUL 2025 to 07 AUG 2025

SE-4, 10 JUL 2025 to 07 AUG 2025

GADSDEN, ALABAMA

AL-897 (FAA)

25219

WAAS CH 65905 W24A	APP CRS 244°	Rwy Ldg TDZE 560 Apt Elev 569
--	------------------------	---

RNAV (GPS) RWY 24

NORTHEAST ALABAMA RGNL (GAD)

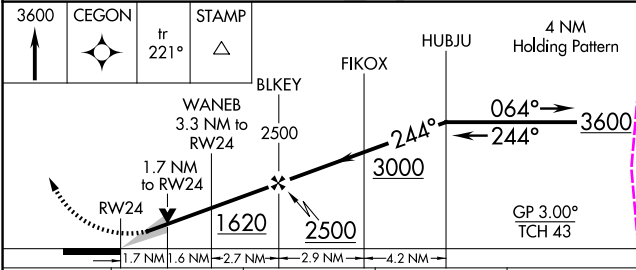
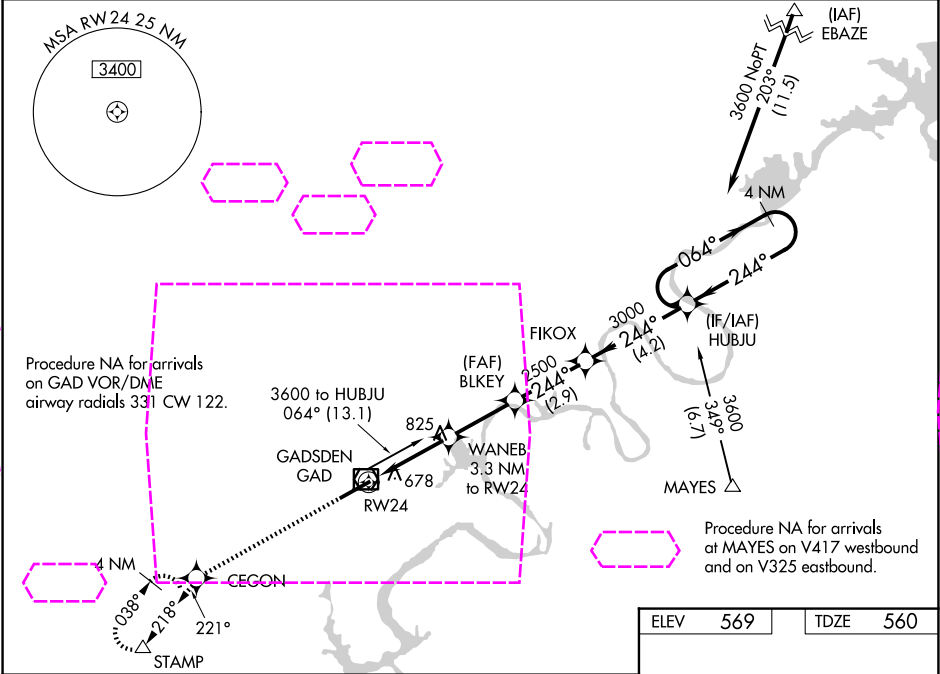
RNP APCH-GPS.

▼ For uncompensated Baro-VNAV systems, LNAV/VNAV NA below -16°C or above 54°C.

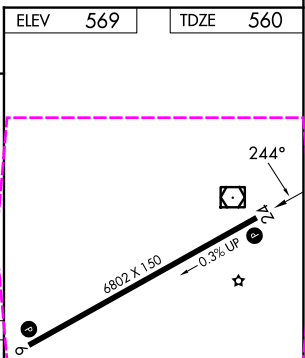
▲ When local altimeter setting is not received, use Annonston altimeter setting and increase LPV DA to 847 feet and all visibilities $\frac{1}{8}$ SM; increase LNAV/VNAV DA to 1082 feet and all visibilities $\frac{1}{8}$ SM; increase all MDAs 80 feet and LNAV visibility Cat C/D $\frac{1}{4}$ SM, and Circling visibility Cat C $\frac{1}{2}$ SM. Baro-VNAV and VDP NA when using Annonston altimeter setting.

MISSED APPROACH: Climb to 3600 direct CEGON and on track 221° to STAMP and hold, continue climb-in-hold to 3600.

AWOS-3PT 127.825	BIRMINGHAM APP CON 125.45 279.65	CLNC DEL 120.05 257.7	UNICOM 122.725 (CTAF) 0
----------------------------	--	---------------------------------	-----------------------------------



CATEGORY	A	B	C	D
LPV DA		781- $\frac{3}{4}$	221 (300- $\frac{3}{4}$)	
LNAV/VNAV DA		1016-1 $\frac{3}{8}$	456 (500-1 $\frac{3}{8}$)	
LNAV MDA	1140-1	580 (600-1)	1140-1 $\frac{5}{8}$	580 (600-1 $\frac{5}{8}$)
CIRCLING	1140-1	571 (600-1)	1440-2 $\frac{1}{2}$ 871 (900-2 $\frac{1}{2}$)	1680-3 1111 (1200-3)



GADSDEN, ALABAMA
Amdt 1D 07SEP23

33°58'N-86°05'W

NORTHEAST ALABAMA RGNL (GAD)
RNAV (GPS) RWY 24

HIRL Rwy 6-24 0
REIL Rwy 6 and 24 0

SE-4, 07 AUG 2025 to 04 SEP 2025

SE-4, 07 AUG 2025 to 04 SEP 2025